

**Christie Whitman
visits Belleville**

See below

**Feisty Lady, 86,
battles crime**

See below

**Hall of Fame to
honor Gibbons, Johansen**

See Sports, pg. 11

Belleville Times

84th Year No. 6

An Orechio Publication

Serving Belleville Since 1909

Thursday, January 21, 1993

50¢

Mayor says she's 'delighted' at raid

SCI swoops down on Belleville's records; Noonan charged with having illegal office

By Howard Klausner

Agents of the State Commission of Investigation took off 23 cartons of documents from the Municipal Building, the Department of Public Works, the Planning Board office and the Fire House, Friday. Township Council President Dr. Frank Noonan announced, "I called them."

Dr. Noonan was scheduled to appear today in West Orange Municipal Court, charged with operating two medical offices in the same building in Belleville, in violation of the Zoning Law.

The charge was filed several weeks ago by Township Planner Robert Ringelheim, whose office was one of the prime targets of the SCI raid.

Ringelheim was "detained" in his office at 383 Washington Ave. and then taken by police car to the

Municipal Building, ostensibly to prevent his removing any documents from his office.

The investigators also detained Township Clerk Mary Lou Hood in her office for most of the morning, as they removed files.

Both Ringelheim and Mrs. Hood expressed indignation at their detention.

Ringelheim's wife was told by a Department of Public Works employee, "Your husband has been arrested."

Fire Chief Walter Beresford was interviewed at the Fire House by an SCI investigator.

Two township officials, Chief Beresford and Township Manager Stephen Cuccio, were subpoenaed to appear yesterday (Wednesday) at an executive session of the SCI in Trenton.

Conspicuously absent from the

scene was Township Attorney Robert Giordano who was emphatic in stating he was not representing any official before the SCI.

A nervous Mayor Marina Perna announced Friday afternoon, "I am delighted at the investigation."

Dr. Noonan said he had sent a letter to the SCI charging discrepancies in pay given to fire department officials in 1990.

He said he had not informed the other members of the Council because he did not think they were interested.

This infuriated Councilman Jim Messina who demanded that polygraph tests be given every member of the Council as well as Manager Cuccio.

"This was done without any information given to members of the Council. If I should learn that Mr.

Cuccio was aware of this investigation without telling us, I can assure him he will be looking for another job!"

"I second that," Councilman Bill Cook said.

Cuccio insisted he had known nothing of the pending raid. Mayor Perna also said she had known nothing about it. Her response brought a demand from Messina for lie detector tests.

Two years ago, Dr. Noonan questioned the payments given to Fire officers in 1990, charging that "overtime" pay was excessive. At the time, administration officials replied that the payments reflected retroactive pay increases that had been ordered by a state arbitrator, after the previous commission government had refused to negotiate with the Fire Department personnel on a labor contract.

Mayor Perna complained that the administration of Township Manager Bertrand Kendall had refused to investigate anonymous tips about alleged wrongdoing.

Messina and Cook both replied, "I throw unsigned letters away."

Neither Dr. Noonan nor Mayor Perna went so far as to say that criminal acts had been discovered, or even suspected. Dr. Noonan declined to be specific about the discrepancies he reportedly found.

He admitted that the Essex County Prosecutor's office had dismissed his allegations, before he turned to the SCI.

Previously, the Concerned Citizens of Belleville had requested the Community Affairs Department to investigate Belleville, and had been turned down.

SCI officials declined to discuss the investigation.

Subpoenas presented to Cuccio by Special Agent Grant F. Cuzzupe called for the following:

Minutes of all Council meetings from Jan. 1, 1990 to Dec. 31, 1992. This would include tapes and notes.

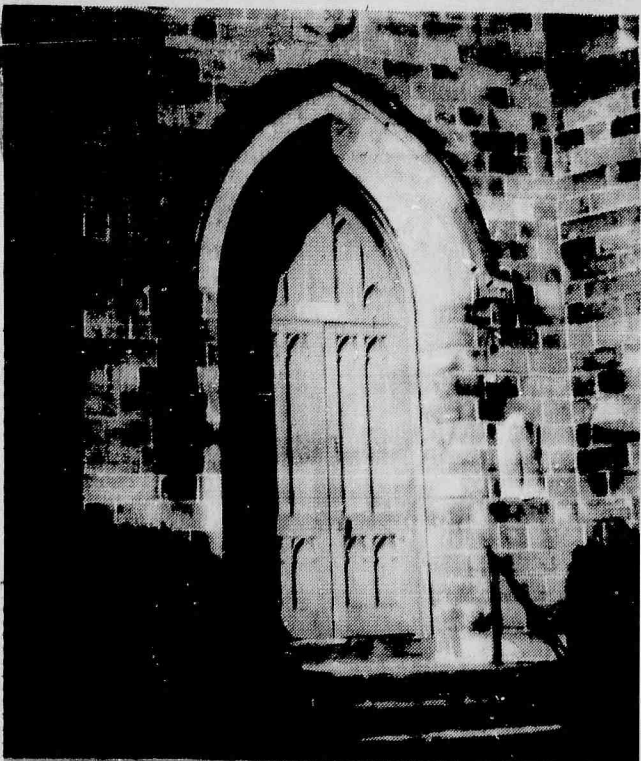
(Apparently, the agent was unaware that until June 30, 1990, there was a Commission form of government. The Township Council came into effect on July 1 of that year.)

Documents on bond issues, check registers, bank statements, deposit slips and cancelled checks.

Audit reports; bid advertisements, rejected proposals, purchase orders, requisitions, contracts and change orders, general ledgers and lists of assets.

Payroll registers, including contracts with Fire Department employees, and 1099 and 1096 forms.

Historic Church is vandalized



LIGHTS ARE GONE - Someone removed two antique lantern lights that graced the front of the First Reformed Church. The anguish and loss resulting from this attack on the sanctuary of the oldest functioning congregation in New Jersey, whose Churchyard is the resting place for more than 60 Revolutionary War soldiers, are described by the Rev. William Mohelt, Pastor, in a Letter to The Editor on Page 4. (Photo by Howard Klausner)

Housing planner claims door was closed to him

A special public session of the Township Council on Monday heard proposals for Senior housing

from two sources.

One source was Dean Boorman, a community planning and develop-

ment consultant, who had been invited by Mayor Marina Perna to address the meeting.

The other was Albert Cameron, representing Tri-State Housing Services, who said he had sent letters to the Township offering his advice, but had not been contacted.

"The last person I spoke to was the former Manager, Mr. (Bertrand Kendall)," Cameron said, "but that was the same day he was leaving."

Cameron addressed the meeting from the audience in the new Council Chamber, following a talk by Boorman.

Boorman recently developed the Senior Citizen housing project in

Rutherford, using Housing and Urban Development funding.

Boorman noted that only 20 percent of the apartments went to Rutherford residents, but he said that 80 percent of the apartments were occupied by people who had once lived in Rutherford, or had connections in Rutherford such as church attendance.

He said that using federal money meant that the town would have no control over who would get the apartments, but he said that by opening up the applications on a first come, first served basis, the tendency was for local applicants to

(Continued on page 2)

Feisty lady, 86, helps nab pickpocket suspects

Detective Captain William Escott reports that an 86-year-old Lyndhurst lady gave pursuit to a pickpocket suspect at the K-Mart, Friday, and alert store security personnel held three suspects and recovered two wallets.

The Lyndhurst lady was in the store at 3 p.m. when a woman asked her about the location of some products.

At the same time, the Lyndhurst lady told police, the questioner was withdrawing a wallet from the shopper's purse.

"Stop that woman! She has my wallet!" the lady shouted.

Two security guards, Rob Wasik and Sam Vesichelli, went after the fleeing suspect and caught up with her as she was entering a car in the parking lot. Another woman and a man were in the car.

The security guards held all three suspects until police arrived.

Police Officers Pat Goldrick and Robert Capece arrived, as did Detective Ronald Edwards.

Police said that they recovered the Lyndhurst lady's wallet and found another wallet whose owner was unaware it had been taken. The second victim was still shopping in the K-Mart at the time.

Denise Williams, 31, of Newark, the alleged wallet thief, was charged on two counts of theft and held in \$1,000 bail.

Antoine Williams, 33, of Irvington, was charged with two counts of conspiracy, and was turned over to Middlesex County authorities, who had a warrant for his arrest.

Dolores Robinson, 34, of Newark, was held in \$1,000 bail on two counts of conspiracy.

Captain Escott commended the K-Mart security guards for their alertness.

"We have had a number of complaints about pickpockets in the area," Escott said. He also commended Detective Edwards and the Police Officers Goldrick and Capece.

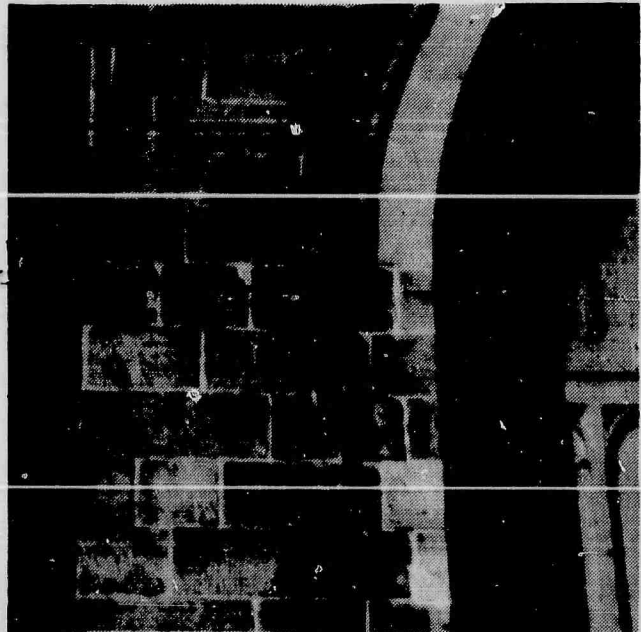
Christie was here



GOP HOPEFUL - Christie Todd Whitman visited Belleville on Saturday, dropping in on the annual Dinner Dance of the Belleville Irish-American Society held at the Knights of Columbus Hall. She said she would announce her candidacy for the Republican nomination for Governor at the end of the month - "after the Inauguration excitement is over". (Photo by Howard Klausner)



THE LIFE SAVERS - Emergency Medical Technicians JoEllen Anderson, left, and Nancy Bombers, climbed to an overpass of Route 21 to bring help to a man whose leg was severed in an auto accident on the street covered highway, three weeks ago. They were able, with the help of Belleville police and firefighters, to get the man to a Newark hospital, where lengthy surgery saved his life, if not the leg.



EMPTY SPOT - Broken wires protrude from empty socket where historic lantern lamp was ripped from front of First Reformed Church.

Aside From That

By: Howard Klausner

On Feb. 3, 1943, the troopship *Dorchester* was torpedoed by a German submarine 150 miles west of Cape Farewell, Greenland. Aboard was a complement of 904 people, including members of the crew, American soldiers en route to England, civilian workers and a group of Danish citizens. A cruiser assigned to protect the troopship had gone in pursuit of another submarine, and the ship had fallen behind the convoy to which it had been attached. ● ● ● ● The attack occurred at 3:55 a.m. All aboard had undergone shipboard drills for emergencies, but the ship went down in 20 minutes, trapping most of those aboard. Lifejackets were distributed but four soldiers had none. At that point, four Chaplains gave their own lifejackets to the soldiers. They remained on the slanting deck of the sinking ship, their arms entwined, each in prayer. The final reported toll of lives was 675, including the men of God. They were the Reverend John P. Washington, a Roman Catholic priest who had served parishes in North Arlington and Kearny; the Reverend Clark V. Poling, a Methodist minister; Rabbi Alexander D. Goode, and the Reverend George L. Fox, a minister of the Dutch Reformed Church. ● ● ● ● The act of Supreme Sacrifice of the four Chaplains has been memorialized in various ways. The Rev. Mr. Poling's father, a world famed clergyman, dedicated the Four Chaplains Chapel in his Methodist church in Philadelphia, in 1961. Interfaith observances of the chaplains' heroism take place throughout the country. Locally, the 50th Anniversary Mass for Father Washington will be offered on Sunday, February 7 at 11 a.m. in St. Stephen's Church in Kearny, where the priest had served before entering the Army of the United States during World War II. Ken Williams, who is New Jersey State Captain, Tin Can Sailors the organization of Navy veterans who served on the effective and highly dangerous Destroyers, will lead a contingent of Tin Can Sailors to the Church. The unit is participating in the next Belleville Veterans Day Parade and marched in last year's parade. Williams' ship served in the Pacific Theater. He notes that the German submarine which sank the *Dorchester* was tracked down and destroyed by the Navy several months later.

The connections between the Roosevelt Family and Belleville are underscored by the research of Ed O'Neill who confirms that in 1789, Nicholas J. Roosevelt, a great-uncle to both Franklin D. Roosevelt and Theodore Roosevelt, joined Brigadier General Philip Schuyler in forming the New Jersey Copper Mines Association in Belleville. Josiah Hornblower, who brought the first steam engine to America in 1753, was adviser to Schuyler and Roosevelt. Hornblower resuscitated the steam engine - which had been put out of action by a fire in 1768 - and put it back into operation to pump water from the copper mines here and in North Arlington. ● ● ● ● Roosevelt decided that it was time to make steam engines in America, rather than wait for English imports to arrive. Accordingly, he formed the Belleville Engine Works, the first such foundry shop in America, and Roosevelt named the plant "Soho" after the engine factory in Birmingham, England. In the same way that the Industrial Revolution was being fostered in England, it was fostered independently in the United States, based on the engineering skills of both Hornblower and Roosevelt. Besides powering the Polacca, the first experimental steamboat ever sailed in America, Roosevelt's engines powered the early Philadelphia water works. Roosevelt later developed a steamboat that navigated the Ohio and Mississippi Rivers, from Pittsburgh to New Orleans. He stayed on in Belleville for several decades, before moving to upstate New York. But the Roosevelt connections continued. James Roosevelt, son of F.D.R., served as President of the National Grain Yeast Corporation, which was founded in Belleville in 1927 for the manufacture of bakers' compressed yeast, and Franklin D. Roosevelt, Jr. worked as a salesman for the firm. Belleville hasn't forgotten the Roosevelts, either. Roosevelt Avenue is the first street you meet as you come south from Nutley on Main Street. And Roosevelt is still a magical name to Belleville people who survived the Depression and World War II.

When Fifth Ward Councilman Harry Zilch heard that the State Commission of Investigation was carting away every piece of paper from the Municipal Building, he immediately rushed to the basement Men's Room, throwing his body across the doorway. "They'd never dare!" he shouted, defending his favorite refuge. Members of Zilch's organization, the Kool Kukumber Boys, confused the event with Spring Housecleaning, and accordingly brought along discarded paperwork of their own. Which is why even now the SCI is poring over records of four beer parties and the ill-fated attempt to rescue Zilch from the New York City Parking Violations Bureau by hiring an Army tank. The tank, of course, got through the Lincoln Tunnel tolls, but the resulting damages make for wild reading. ● ● ● ● Baldassaro DiVincenzo Mitten, our Copy Cat at Town Hall, got into an argument with Susan Whelan, acting-secretary to the Township Manager. "I am not signing or punching out any time card!" Baldassaro screamed. "But, it's the rule for everybody, even the Department Heads!" "Oh, yeah?" snarled Baldassaro. "Does that include Tommy Salzano, last seen going out for lunch with the Manager on December 5, 1992?" "As Township Assessor, he is very busy," Susan admonished Baldassaro. "And at least he does productive work." "If you call reducing taxes of the major landlords productive work, he's doing a great job," Baldassaro said. "In the meantime, I'm hustling cat food to some of the Senior Citizens who have to make up the shortfall. Furthermore, no cat has punched a time card since the First Dynasty in Egypt, and I'm not breaking with tradition!"

An Orechio Publication

Knights set events

Belleville Knights of Columbus 835 will sponsor a Pancake Breakfast on Jan. 31 from 8 a.m. until noon at the Council Hall, 98 Bridge St. This will be for the benefit of St. Peter's Church (Cemetery Maintenance Fund). Adults \$4.00; children from 7-12 years of age \$2.00; and under 6 years of age free. For further information, call chairman Mark Audubato 759-2112 or Grand Knight Tom Doeffinger 751-7144.

On Feb. 12, the Belleville Knights of Columbus will sponsor a Valentine's Dance at their Council rooms located at 98 Bridge St. from 8 p.m. until midnight, featuring the well known Bobby Byrnes. \$15.00 per person, limited open bar, bring your own food. Chairman Alphonse Rossi 751-7145 or Grand Knight Tom Doeffinger 751-7144.



CHRISTIE AMONG FRIENDS - Gubernatorial hopeful Christine Todd Whitney was greeted warmly at the Belleville Irish-American Society Dance, Saturday. From left are Karen Smith, Mrs. Whitman, Tom Grallmond and Richard Yanuzzi. (Photo by Howard Klausner)

National Geography Bee Middle School winner

Jon-Paul Lewis, an eighth grader at Belleville Middle School, won the school's National Geography Bee held on Jan. 13. Runner-up was Jason Stauss, a seventh grader.

Thirty-five seventh and eighth graders participated in the first round of the National Geography Bee.

The school-level bee, at which students answered oral questions on geography, was the first round in the fifth annual National Geography Bee, which is sponsored by National Geographic WORLD, the Society's magazine for children, and Amtrak®.

The kick-off for this year's Bee was the week of Jan. 4, with thousands of schools around the United States, the District of Columbia, and five U.S. territories participating. The school winners, including Jon-Paul Lewis, will now take a written test; up to 100 of the top scorers in each state and territory will be eligible to compete in their state Bee April 2.

The National Geographic Society with its co-sponsors will provide

an all-expense paid trip to Washington, D.C., for state champions and their teacher escorts to participate in the National Geography Bee national championship on May 25 and 26. The first-place national winner will receive a \$25,000 college scholarship; the second-place winner, a \$15,000 scholarship; and the third-place winner, a \$10,000 scholarship.

Alex Trebek, host of "Jeopardy" will moderate the national finals, which will air as a prime-time special on the Public Broadcasting Service at 8 p.m. May 26.

The National Geographic Society developed the National Geography Bee in response to a growing concern about the lack of geographic knowledge among young people in the United States.

A 10-country Gallup survey conducted for the Society in 1988 and 1989 found that people in the U.S. ages 18 to 24 - the youngest group surveyed - knew less about geography than young people in any of the other countries in the survey.

The National Geographic Society, with nearly 10 million members, has as its mission: the "increase and diffusion of geographic knowledge." In addition to the National Geography Bee, the Society sponsors a number of other geography education initiatives, including the Summer Geography Institute for teachers, the National Geographic Society Education Foundation, and the Geographic Alliance Network, which is currently working in almost every state and Puerto Rico.

Housing planner claims door was closed to him

(Continued from page 1)

win preference. "You tell people they must file by 9 a.m., and you have a line up all night long waiting. This tends to give the edge to local residents," he said.

Boorman said that his help in preparing a HUD grant application would be \$7,500.

Cameron, whose firm has developed Senior Citizen housing in upstate New York, advised against financing through HUD.

"The town can issue bonds, and pay them off through the rentals," Cameron said.

The advantage of using HUD is the low rental charged - limited to 30 percent of the tenant's monthly income.

Boorman estimated that the property to be acquired from Essex County on Franklin Avenue - five and one-half acres for \$425,000 - could have two buildings, each with 60 to 70 families, in low rise structures going up no more than three stories.

The Council adjourned to consider the advice. No word was forthcoming on future actions to build Senior Citizen housing in Belleville.



"Only Love Can Make A Home"

We are proud to offer this special Members' Only Figurine for 1992. PRECIOUS MOMENTS artist Sam Butcher created this piece to portray a special friend, Mr. Webb, who lovingly built homes for God's creatures.

To obtain your exclusive figurine, simply bring us your reservation form. Remember, only current 1992 PRECIOUS MOMENTS Club Members can acquire this special piece. If you are not already a member of this wonderful club, we encourage you to join today! Hurry deadline to order is March 31, 1993.

Chandelle Gifts & Cards

1358 Clifton Ave., Clifton (Richfield Shopping Center)
778-0791
Daily 10 - 6 Thurs. & Fri. 10-9



©1992 Enesco Corporation illustration shown
©1992 Precious Moments, Inc. Inc. Enesco

Free Quotes
Notary Public

Member Belleville Chamber of Commerce

★ **AUTO Immediate Coverage***
★ **HOMEOWNERS/TENANT**
★ **BUSINESS/WORKERS COMP.**
*Immediate coverage for qualified applicants
ALL YOUR INSURANCE NEEDS. COME IN FOR FREE QUOTES.

TROISE INSURANCE AGENCY INC.
172 Washington Avenue, Belleville
759-4100
Hours: Mon. Tues. Wed. Fri. 9:30-5:30
Thurs. 9:30-6:00pm
Sat. 10:00am-5:00pm by appointment only

BE DECAY FREE IN '93



START SMILING

With a Consultation
2 x-rays and an oral exam
AT NO CHARGE
an \$85 value by appointment only

Call for Details "NO-PAINO (667-2466)

James D. Muglia, DDS, BA, FAGD

18 Years of Treating & Beautifying Smiles
Family • Cosmetic • Restorative Dentistry
24 Hours Emergency Service

Smile Today

10 Franklin Avenue • Nutley
Dial "NO-PAINO" (667-2466)

Plaza Bootery
Boots Repaired & Refinished
483 Franklin Ave. Nutley
667-8964

How to Get the Best Cruise Without Getting Soaked!

SAVE, Call A Cruise Consortium Cruise Specialist



○ SAVE Up to 50%
○ Unpublished Discounts
○ Great Service/Great Value
CALL Your Local Cruise Specialist NOW
Cruises International LTD.
Worldwide Cruise Consultants
(201) 743-8611
MEMBER THE CRUISE CONSORTIUM

Here's Looking At You In 1993!

WEIGH OF LIFE

• Structured Sensible Food Plan



• Self-Esteem Motivational Counseling

• Behavior Modification Strategies

• Professional Weight Management Counselors

Lose Weight The Safe & Effective "Weigh!"

NOW OPEN IN NUTLEY

VFW Hall 271 Washington Ave.
Every Thursday Starting
January 21, 1993 6:30pm

FEES: \$2.00 Registration
\$5.00 Weekly Classes

CALL FOR INFORMATION
935-6717 after 3:30

Visit Our Other Locations

Rutherford
Knights of Columbus
Mon. 6:30pm

Kearny
West Hudson Hospital
Wed. 5pm & 6:30pm
Sat. 9:30am

Bring A Friend and Both Save

\$1.00 OFF

of \$2.00 registration fee
Good for all Weigh of Life locations
Expires 1/31/93

Letters to service people

By Cathy Scocimarro
Belleville High School's computer science classes recently tried to lift the spirits of some of our U.S. service people during the holiday season.

Miss Kathy Partus' computer science classes wrote letters using their word processing skills to the service people in the Aleutian Islands, on board ships in Korea, and Europe to show their appreciation for their services. With the help of the printshop classes, they were able to make cards and signs. Students enclosed an item of inter-

est with their letters such as: Christmas cards, NFL Standings, comics, news articles, pictures, and cross word puzzles.

The students were happy to take part in this assignment. Tom Popowich, a BHS student, said, "you have to remember that there are many people who care and do something about it. That is why my classes and I are writing. To show that we care." Partus said, "I was proud to witness the students' enthusiasm and sensibility to our service people — especially at this holiday season!"

Math Club elects officers

BHS Math Club advisors, Mr. Droge and Mr. Eccles, recently announced the new 1993 club officers as follows: President, Sandip Desai; Vice President, Jonathan Cummings; Secretary, Prashant Maddipati; and Treasurer, Michael DeVivo. There are also four class representatives: Jose Padilla, senior class; Heba El-Monally, junior class; Chinton Pancholi, sophomore class; and Ben Hu, freshman class.

The Math Club accepts any students who are interested in mathematics. The members will be competing in interscholastic competitions throughout the school year. The students involved in the Math Club will be tutoring others who may be having problems in their math classes. The club also works on mathematical projects, and members will be working with computers to enhance programming and language skills.

**Is Being Overweight
A Threat To Your Health?
Do You Need To Lose A
Lot of Weight?**

Immedicenters of Bloomfield and Clifton
Health Management Center - Weight Management Program

- Lose weight rapidly, safely, and learn to change your lifestyle.
- There is a weekly physician visit and weekly educational program.
- Long term maintenance is an essential part of the program.
- It is cost effective.

THE OPPORTUNITY OF A LIFETIME

We are one of 25 medical weight management programs in the country selected to study ursodiol for the prevention of gallstone formation. Financial benefits are offered to those who qualify and would like to participate in the research study. Eligible candidates required a specific height/weight ratio and a gallbladder free gallstones. Come to one of our FREE orientations on Feb. 17th, at 7:00 PM for a complete explanation of the program.

Call to reserve a spot.

Immedicenter Health Management Center
557 Broad Street
Bloomfield, NJ 07003 • (201) 680-1888

BELLEVILLE HIGH SCHOOL NEWS

Mental health help

By Cecy Piacenti

Community Mental Health Services, a non-profit United Way member agency, offers help to people who are struggling with the challenges of every day life. CMHS consists of five service programs, one of them being the Friendly Visitors Program.

The Friendly Visitors Program, directed by Eloise Heacock, has been providing free services for the past fifteen years, to homebound senior citizens over sixty years of age in Belleville, Bloomfield, and Nutley.

A professional staff, experienced in the fields of psychology, social work, nursing, education, and physical therapy, oversee a corps of volunteers who are trained to bring friendship and support to homebound senior citizens. Volunteers visit and/or telephone homebound senior citizens on a regular basis, giving them access to their community. The program was designed to try to keep seniors in their homes

rather than in institutions.

Volunteers, ranging in age from that of high school students, college students, full time employed men and women, to seniors themselves, participate in a training program and then are matched with a senior living near the volunteer's home.

First, referrals of homebound seniors are made to the Friendly Visitors Program from agencies, neighbors, friends, or relatives. Next, an initial interview takes place to see if that senior is appropriate for the service. The volunteer's first visit establishes the extent of the services to be provided and helps to build a rapport. Supervision is given to the volunteer / senior relationship through monthly volunteer meetings.

Anyone interested in spending one hour each week bringing friendship and understanding to a homebound senior in their community is urged to volunteer by calling the Friendly Visitors Program at 450-3135.

Twelve win scholarships

By Stephanie Ferruggia

Twelve Belleville High School seniors have been selected by the New Jersey State Department of Higher Education to receive scholarships for their academic achievements. Five seniors are being honored as Edward J. Bloustein Distinguished Scholars, and seven seniors are being honored as Garden State Scholars.

The Edward J. Bloustein Distinguished Scholars are in the top 10% of their class, have a combined SAT score of at least 1200, or are ranked first, second, or third in their class by the end of their junior year. The Distinguished Scholars will receive a \$1,000 annual scholarship if they

choose to attend a New Jersey college or university. The Distinguished Scholar recipients are: Brian Harvey, Jennifer Schmid, Amol Shah, Manisha Tare and Phoi Trinh.

The Garden State Scholars are in the top 20% of their class and have a combined minimum SAT score of 1000 by the end of their junior year. The Garden State Scholars will receive a \$500 annual scholarship if they choose to attend a New Jersey college or university. The Garden State Scholar recipients are: Katrina Bolchune, Dani Durante, Jomar Gomez, Lee Grzywnski, Cecy Piacenti, Salome Shimokawa and Christina Spina.



The Belleville High School News is a feature of the Belleville Times. It runs weekly, space allowing.

All stories are written by the students of Mr. Anthony Salese's journalism class. Their work is coordinated by student editor Cathy Scocimarro.

Talent shines at show

By Sabrina Sena

Belleville High School students are performing in the Second Annual Talent Show on Jan. 22 at 7 p.m. in the High School Auditorium. The doors will be opened to anyone who wants to see dancers, singers, or bands perform. There will be everything from music by Whitney Houston and Ugly Kid Joe to coffee and cake provided by the Italian Club.

The high school invites anyone to come and see the students show their stuff. Please come and help the students fund the high school's next production in the Spring.

Video Repair Express

Having a Problem With Your V.C.R.?

FREE Pick-up

FREE Return

FREE Repair Estimate

Senior Citizen Discount

90 Day Guarantee on Repairs • Most Repairs Done In 48 hours

V.C.R. Cleaning \$14.95 Reg. \$29.99

Call Video Repair Express
(Video Tonite)

11 Ridge Rd., North Arlington

997-4141

NUTLEY FARMS

FRESH FRUITS & VEGETABLES

Grand Opening

SPECIALS GOOD THRU TUES. JAN. 26

BROCCOLI RABE
69¢ lb.

WE CARRY
ELIO'S
BRICK OVEN ITALIAN
BREAD Fresh Baked
& Delivered Daily

Sweet
TANGERINES
100 SIZE
7 for 99¢

Red & Golden
DELICIOUS APPLES
39¢ lb.

Large California
NAVEL ORANGES
5 for 99¢

BROCCOLI
69¢ Bunch

ICEBERG LETTUCE
59¢ head

Grade A Farm Fresh
Extra Large
EGGS 79¢ Doz.

GUIDO
Imported Pastas
59¢ lb.

5lb. Bag
RUSSET POTATOES
79¢



Dear Friends and Neighbors,
You are cordially invited to attend the Grand
Opening Celebration of

**The Borderline
CAFE' & RESTAURANT**

Thursday evening January 28th, 1993.
Please join us for complimentary Hors D'Oeuvres
and special drink prices. We're sure you'll find our
atmosphere casual and our food delectable. Hope
to see you there.

Your Hosts,
Paul Calicchio
&
Anthony Diamente

DAILY BUSINESSMAN'S LUNCH

Specials from **\$4.95**
Imported Beers, Wines & Cocktails

TUESDAY IS "PASTA NITE"

Featuring homemade pastas smothered in a
delectable sauce created by our own "Chef Alfonso"

AFTER AN EVENING OUT

Enjoy a delicious cup of Espresso or Cappuccino
Complimented by our homemade Italian Pastries

• PARTY ROOM
AVAILABLE

24 Washington Ave. Nutley
235-0505

OPEN: Tues.-Sat. 11am-2am Sun. 5pm-1am

• ON PREMISE
CATERING

"A Traditional Hometown Produce Market"

65 Franklin Ave., Nutley • 661-3095 (1 Block South of Burger King)
OPEN: Monday - Saturday - 8:30 - 6pm

OUR OPINION

The Clock of Life

The clock of life is wound but once
And no one has the power,
To tell just where the hands will stop
At late, or early hour.

To lose one's wealth is sad indeed,
To lose one's health is more —
To lose one's soul is such a loss
As no one can restore.

The present only is our own
To seek to do God's will,
Tomorrow holds no promise, for
The clock may then be still.

Let's really investigate

We suspect that the State Commission of Investigation had little choice but to investigate the charges of improper spending made by Mayor Marina Perna and Council President Dr. Frank Noonan.

With the vagueness that has endeared him to the public for years, Doc Noonan said the charges were based on salary statements issued to Fire Department officers back in 1990.

There were obvious "discrepancies" between what the officers received and what they were supposed to receive - insofar as an alert listener could tell from the good doctor's statements to the press, Friday.

Doc Noonan frequently talks the same way he writes prescriptions, in the illegible tradition of the medical profession, so we base our surmises on what we think we heard.

So far as the Belleville Times can figure it, he is referring to payments of retroactive raises given to the Fire Officers at the order of a state arbitrator, back in 1990.

The arbitrator ordered parity between salaries paid officers of the Fire and Police Departments. He also ordered retroactive raises of 6 percent a year for 1989 and 1988.

As a result, 1990 pay forms would certainly indicate "discrepancies" because the Fire Officers received their regular pay plus the additional thousands of dollars owed them.

Doc Noonan was well aware of this, because he made an issue of the extra payments two years ago, when he apparently thought that overtime payments were involved.

If this is the discrepancy he reported to the SCI, then he was not being completely honest. Perhaps he had more genuine faults to find. We do not know.

Neither we nor the minority members of the Township Council believe that Mayor Perna or the Township Manager were unaware of the pending SCI action.

We think that Mayor Perna lent the prestige of her title to Doc Noonan's claims of improprieties, leaving the SCI with little choice but to investigate.

We believe that Mayor Perna and Doc Noonan threw in all the unsigned statements that have been floating around, charging improprieties. The Belleville Times has looked into most, if not all, of these charges and found them to be worth the signatures they carried.

We think that by taking the action they did, Mayor Perna and Doc Noonan added more damage to Belleville's reputation.

But since the SCI is now involved, perhaps it will include in its inquiries the strange and intimate relationship between the Rasmussen Insurance Company, Mayor Perna, Doc Noonan, Township Manager Stephen Cuccio, and Sam Papa, the grey eminence who appears to pull the strings on the Township Council and whose connections are not at all clear.

We do not welcome the SCI to Belleville, because of the notoriety its visit brings the good name of the Township. But since it is here, we hope it will not go away before collecting more substantial information than that provided by the Mayor, Doc Noonan and the anonymous letter writers.

YOUR OPINION

Educational facts

To the editor:

Upon reading news reports purported to convey the results of resolutions voted upon at the December 21, 1992 Board of Education meeting, we the undersigned would like to offer clarification via a presentation of the facts.

Some time ago a committee at the Board of Education, composed of three Board members, negotiated the contract settlement with the secretary's association, resulting in a 6%/3% split guide increase for the 1992-93 school year. This equates to a 7 1/2 percent annual increase in salary.

By past practice the central office non-unit secretaries would subsequently receive the same increase as the association group settlement.

Obviously, anyone familiar with this past practice would be confused, as are the undersigned, regarding the split voting of the Board that occurred on December 21st on the salary resolutions. This confusion is magnified by the fact that one of the Board members voting against all these salary resolutions was on the original negotiating committee that approved the 6%/3% split guide for the secretary's association.

To clarify the administrative salary increases it is necessary to know the total negotiated settlement. Yes, the 1992-93 salary percentile increase of 4% for the top three administrators amounted to \$3,748.00, \$3,536.00 and \$3,478.00 respectively. However, the net effect of reductions in perks reduced the dollar increase to a net of approximately 3.5%. Likewise, for the 1993-94 salary year the 3% increase, with the reduction in perks, reduced the dollar increase to a net of approximately 2.25%.

After approximately seven months of intense negotiating by the Board acting as a committee of the whole, the Board directed Board Counsel to present its final unanimously agreed upon contract offer at the above mentioned percentages to central office administrators. Throughout these negotiations it was continuously stressed by all Board members that it was imperative that our final offer be unanimous and this was confirmed by the unanimous signing at the final settlement by the entire Board.

After reading one of the letters to the editor, the undersigned realized how distorted the reports have become as to the salary resolution voting at the December 21st public meeting. Just for the record, once again, Board of Education members are not compensated and hence do not benefit from these resolutions. The undersigned are totally unaware of any "new furniture for Board of Education members." We are even more puzzled as to where we would put such furniture! In closing, we the undersigned would like to commend Howard Klausner for his editorial commenting in the December 30th issue of the Belleville Times where in he states "Belleville gets more education for its tax dollar than any other town in Essex County."

Ralph Mazzuca, Vice President
Gabe Nazziola
Joe Del Guercio

Catches to HUD

To the editor:

At the recent public Town Council meeting of January 12th, Belleville taxpayers were committed to pay an initial \$400,000 for 70 units as Senior Citizen housing. (Senior citizen housing is generally understood to be available to qualifying citizens at very low rental cost). The Ordinance for the \$400,000-Bond issue to acquire 5 acres from Essex County for the project, was approved by the Council in spite of stiff opposition by citizens in attendance, wanting the purchase of the property to include the condition: "intended for Senior Citizen housing for Belleville residents only"... Mayor Marina Perna insisted that this wording could not be included in the transfer of the property. (I can think of only one reason, that it would be "discriminatory")

Obviously the restriction also precludes qualification of Federal HUD money. Upon (my) questioning, the Mayor also stated that there is yet no plan who will build the units, or how, but she indicated that it probably will be private developers, with a resulting rental of between \$550 and \$800 p/month. That factor will of course eliminate a very substantial number of the pool of some 8000 "eligible" residents in need of "Senior Citizen housing, so that the proposed 70 units (a number arrived at without study) may be quite adequate, but for the sad reason that those with the most need "for relief" won't be able to afford them...

So what will we have? We will still have seniors on fixed incomes with their backs to the walls because of disastrous annual property tax increases, partly due to exorbitant salary increases, and \$2 prescription plans on top of most liberal health insurance packages. Did you know, for example, that the \$2 prescription plan for the school system employees / administrators is costing the taxpayers some \$400,000?!!

Rather than concentrating on creating 70 housing units for seniors (at what cost to the taxpayers?) a serious effort is in order to lower the property tax burden for everyone by some \$400 to \$500, like the most recent increase, by "cut backs and give backs" as is being done in the private sector.

Cornelis P. Vander Zwan

A Minister's plea

To the editor:

Between Friday, Jan. 15 and Sunday morning Jan. 17, the two lamps attached to the main church building of the Belleville Reformed Church had been stolen. This is a tragedy since there is great historical significance concerning the church.

The church serves all the community and hopefully has a special place in this community. Several years ago a historical plaque was stolen and each time something like this occurs it damages not only the way the church looks but hurts the community as well. I hope we as a community can educate those around us concerning the importance of our roots and historic structures.

The Rev. Wm. Mohett
Belleville Reformed Church

Flight #198



A feature of The Nutley Sun,
the Belleville Times and Bloomfield Life

By Frank Orechio

• **ANYBODY** interested in the work of historical societies might well plan to attend the quarterly meeting of the Nutley Historical Society on January 28, 8 pm, at 65 Church Street. Featured at the meeting is a presentation by Ms. Jeanne Van Steen who will speak on the origin of the Nutley Historical Society and present slides of "Nutley's Past". Readers are urged to attend the meeting and enjoy scenes of old Nutley, which in many cases, no longer exist. This year, the organization will also be celebrating its 50th anniversary. President Peter Balma is anxious to kick off the 50th Anniversary Membership Drive with a large attendance at the January 28th event.

• **LAST** Saturday was a great day in Essex County for Republican gubernatorial candidate, Chris Whitman. Reflecting all the trappings of a candidate for national office, Whitman utilized "advance men" to case the area before her appearance. Accompanied by a large entourage, Whitman made her appearance. Her supporting cast at a rally that drew several hundred people were Essex County Republican Committee Executive Ralph Salerno, State Senator John Scott, Assemblywoman Marion Crecco and former State Senator Dick Zimmer.

Three aides completed the complement of Chris Whitman's personal staff. Essex Republican Chairman John Renna is supporting Chris Whitman's principal opponent, former New Jersey Attorney General Cary Edwards of Bergen County. A second Bergen County Senator, Dr. Gerald Cardinale, is campaigning for Whitman's election. There are seventy communities in Bergen County and a number of mayors are also supporting Whitman. With split support in Essex and Bergen Counties, the task of Cary Edwards to beat Whitman is made more difficult. Leaders of major Republican counties are reported to be behind Whitman including Monmouth, Union and Morris Counties.

• **BELLEVILLE** Fire Chief Walter Beresford and Belleville Municipal Town Manager, Stephen Cuccio, were requested to appear before the State Commission of Investigation. The Commission was created in 1968 as part of an effort to combat organized crime and official corruption. 27 boxes of municipal records were seized by agents of the SCI. The request for the state investigation was initiated by Dr. Frank Noonan, and the request received the resounding endorsement of Mayor Marina Perna. During the period that the SCI agents were in Town Hall, members of the Belleville Police Department were deployed to various offices where the workers, in effect, were held hostage. One female worker was requested by a policeman to open her purse, which she did. Who ordered the Gestapo tactics by the Police Department remains a mystery. The Town Manager reportedly has denied any knowledge of such action. Any one out there have any guess who the second suspect would be? I have to believe the Belleville Town Hall Civil Service employees are dedicated and honest, beginning with our Town Clerk, Mary Lou Hood.

The developments have raised cries of a Recall Election. A reported curiosity in the council members' voting pattern is a report that when the Rasmussen insurance plan was presented to the council

recently, Mayor Marina Perna abstained from voting. When the action on the Rasmussen firm was taken at an earlier date, reportedly, Mayor Marina Perna voted in favor of the resolution?

• **IN** a deliberate effort to increase participation of women in municipal affairs, Nutley Mayor Carmen Orechio recently nominated and the Board of Commissioners approved Mrs. Yolanda Perrotta Evans as a member of the Board of Adjustment, commonly known as the "Zoning Board". The person Mrs. Evans was replacing was former board member, Pat Little, Jr. Early on, Mayor Orechio informed Mr. Little that he intended to replace him with a female. Soon thereafter, Mr. Little unleashed a campaign to retain his seat, even going so far as to say that only the Board of Adjustment had authority to nominate and elect its members.

The record indicates that Mr. Little received his original appointment through a process that has been in existence in the Nutley town Commission since the creation of the Board of Adjustment. Four years ago, he was nominated by then Mayor John Kelly and approved by the incumbent Board of Commissioners. Now, Mr. Little says the law doesn't permit such a procedure. Town Attorney Anthony Drollas upholds the system in place and has given his legal opinion that the appointment of Mrs. Yolanda Perrotta Evans is valid.



• **TODAY**, Thursday, William Jefferson Clinton and Al Gore will be sworn in as President and Vice President respectively to guide the nation's fortunes over the next four years. We wish both of them good health and a successful term. Pictured above are Hillary and Bill Clinton and Tipper and Al Gore.

Belleville Times

Serving Belleville Since 1909

(USPS 049-220)

Publisher: Frank Orechio
Arnie Ziem
General Manager
Published Every Thursday
At 155A Washington Ave.
Belleville, N.J. 07109

Second-Class Postage Paid

At Newark, N.J.

Postmaster: Send address changes to:
The Belleville Times, 155A Washington Ave.,
Belleville, NJ 07109

Editor: Howard Klausner
Social Editor: Helen Maguire
Sports Editor: Michael Lambert
Advertising: Rene' Theodore
Art Director: Diane Lombardy
All departments call:
759-3200

Fax: 667-3904

Annual Subscription: \$18.00
Senior Citizens: \$ 8.00



Cary Edwards

Nursing home guide available

Under a grant from the National Council of Jewish Women, Essex County Section, Senior Service's Nursing Home Advocacy Center has completed a new edition of The Consumer Guide To Essex County Nursing Homes. Copies are available to interested individuals.

The new edition of the Consumer Guide contains relevant information on alternative services available in the community, as well as expanded profiles of the individual

nursing homes. "People think they will never need a nursing home. But if the need should ever arise, decisions usually are made quickly."

Educating yourself beforehand puts you in a much better position to make the best choices," states Shelley Levine, director of the Nursing Home Advocacy Center in Orange.

Levine said that the public is not well informed about nursing homes and long term care in gener-

al. The Consumer Guide is an excellent source for Essex County residents to learn about long term care and begin planning for their needs.

The Nursing Home Advocacy Center provides information, referral, and guidance with nursing home issues and alternatives in the community. For additional information or to request a copy of the Consumer Guide to Essex County Nursing Homes, please call 673-0640 Monday through Friday between 9:30-4:00.

Hospital needs helping hands

Adult men and women are needed for volunteer jobs at Montclair Community Hospital.

Any day, Monday through Friday, 7 a.m. to 9 a.m., the hospital needs patient transporters to move patients from one hospital area to another.

From 9 a.m. to noon, clerical helpers are needed in various departments.

Saturdays, 8:30 a.m. to noon, a people-oriented individual is needed to work with patients coming in for free health screenings. The volunteer will help the patients complete their paperwork and direct them to screening areas.

For further information, call the Volunteer Office at (201) 744-7300, Extension 4279.

Cancer Care offers 'For Men Only' support group

Cancer Care of NJ is sponsoring a special eight-session "For Men Only" education and support group in its Millburn office at 241 Millburn Avenue, Millburn. The sessions are specifically designed to help male cancer patients gain emotional support and exchange ideas about coping with cancer. The group is open to all male cancer patients who want to use their cancer experience as a turning point to make changes in their lives. The group will meet on Thursday afternoons starting Feb. 4 and will be led by a professional social worker. The sessions are free of charge and advanced registration is required. For more information, contact Jose Pacheco at (201) 379-7500.

Cancer Care, Inc., is a non-profit, non-sectarian social service organization founded in 1944 to help cancer patients and their families cope with the devastating impact of cancer. It is the largest

agency in the nation solely dedicated to providing psychological support and financial assistance to cancer patients and their families. All of Cancer Care's programs are free of charge.

Oswaldo Gonzalez completes Basic

Pvt. Oswaldo Gonzalez Jr. has completed basic training at Fort Jackson, South Carolina.

He is the son of Oswaldo Gonzalez of Belleville. He was graduated from Columbia High School in Maplewood in 1991.



A GOOD SCOUT — John McMullen, left, owner of the New Jersey Devils and a Montclair resident, holds the Distinguished Citizen Award of the Essex Council of the Boy Scouts. Sharing a laugh with McMullen, who was honored Jan. 5 at a dinner in Mayfair Farms, West Orange, are Kelno Taylor, 10, a Cub Scout in Pack 5, Montclair and Dinner Chairman Garry J. Scheuring, Chairman, President and Chief Executive Officer of Midlantic Corporation.



GENEROUS DONATIONS - From left are Phyllis Grainger and Maude Baumer of the Franklin Avenue Belleville Senior Citizens Club, showing Clara Maass Medical Center volunteer Marie Vander Zwan one of the afghans the club donated to the hospital. Each year, the club knits afghans, lap robes, hats, scarves, slippers and baby sweaters for the hospital and Continuing Care Center.

Tree seedlings are available

Lost your tree to that Nor'easter? Or you'd like to plant some new shrubs?

Scott A. Weiner, Commissioner of the New Jersey Department of Environmental Protection and Energy has announced that shrub and tree seedlings are available for purchase from the State Forestry Services.

Weiner said the seedlings may be purchased in multiples of 50 as a New Jersey Environmental Packet or in quantities of 1,000 through the state's Reforestation Program. They can be planted in small urban sites or to reforest a rural area.

An Environmental Protection Packet can be purchased for \$20. A typical packet of seedlings contains a combination of white pine, Norway spruce, autumn olive, chestnut oak, northern red oak, persimmon, gray dogwood and hackberry.

The seedlings range in size from four to 16 inches.

GOLD'S GYM BELLEVILLE A FAMILY FITNESS AND AEROBICS COMPLEX

SIMPLY THE BEST.

Gold's Gym Belleville Has The Best Trainers, The Best Aerobic Instructors, The Best State-Of-The-Art Equipment, The Best Service, Voted The Nation's Best Gold's Gym And Most Of All We Give You The Best Results!

JOIN TODAY AND WE WILL GIVE YOU OUR BEST PRICE

CALL NOW FOR A FREE TOUR
201-751-6999

471 Cortlandt St., Belleville, NJ 07109

HOURS: Mon-Fri, 5:30am-11:00pm • Sat, 8:00am-6:00pm • Sun, 8:00am-4:00pm

HOME A-LOANSM

The Greatest Home Equity Loan Ever!
The Low Rate Is Fixed For 5 Years

7.5%

APR

NO POINTS—NO APPRAISAL FEE—NO LEGAL FEE—NO APPLICATION FEE

This rate is LESS THAN HALF of most credit card rates. Therefore, it's the best way to borrow money for any purpose. You can pay all your bills and even finance a new car. Most importantly, you may be able to deduct the interest from your taxes.*

Rate valid for 1 and 2 family N.J. owner occupied homes only. Application must be received by March 31, 1993. Loans are available from \$10,000 to \$100,000. Offer subject to change without notice. Consult your tax advisor for details. 10 and 15 year terms also available. * Loans for amounts from \$100,000 to \$200,000 also available.

CALL TOLL FREE 1-800-THE-LOAN

THE TRUST COMPANY

OF NEW JERSEY

The Bank with Heart since 1896

40 Branches in Bergen, Essex, Hudson, Middlesex, Monmouth, Morris, Passaic and Somerset Counties. Assets Over \$2 Billion • Executive Offices: 35 Journal Square, Jersey City, N.J. • Member F.D.I.C.

Belleville

Corner Main & Jorammon/
Grand Union Shopping Ctr.
751-1001

Hours: Daily 9 - 7 • Saturday 10 - 4

Nutley

Corner Franklin & Vreeland Aves.
661-0300

Hours: Daily 9 - 4 Thurs. & Fri. 9 - 7
Saturday 10 - 1



Introducing...
The PRECIOUS MOMENTS
Commemorative Card Series



We are pleased to offer a series of 16 limited edition cards to commemorate and celebrate the 15th Anniversary of America's most loved collectible.

Each colorful card will highlight a very special PRECIOUS MOMENTS bisque figurine, one to represent each year of the collection...and a bonus card that features the beautiful 15th Anniversary Commemorative Figurine.

Beginning in January, stop by to learn how you may collect this limited edition series and become eligible to enter the grand prize drawing for a trip for two to the Orient!

Chandelle
Gifts & Cards

1358 Clifton Ave., Clifton 778-0791
(Richfield Shopping Center)

Daily 10 - 6 Thurs. & Fri. 10 - 9

©1992 Enesco Corporation illustration shown. ©1992 Precious Moments, Inc. Lic. Enesco

**THE BEST
HEALTH
INSURANCE
IS
PREVENTION**

**Guarino
Chiropractic Center
759-3600**

**COUPON
SPECIAL
CAR WASH**

\$5.50 + Tax

For Full Service

Exterior \$4.75 + Tax
(with This Coupon)
Expires 2/18/93

**FRANKIE'S
FUTURMATIC
BRUSHLESS
CAR WASH**

305 Broad St. • Bloomfield
748-9459

Open Mon. - Sat. 8-5
& Sun. 8-3

YOUR OPINION

More than cookies

To the editor:

Most people in the community see the image of Girl Scouting as "cute little girls who sell cookies and go camping." Although there are two ongoing activities, there is much more to the Girl Scout cookie sale than meets the eye.

I think your readers would be interested to know that the preparation for the sale begins long before the public even sees Girl Scouts. In December and early January, girls and adults work in partnership to form goals that will enable them to participate in a wide range of Girl Scout activities. While receiving their training for the 1993 sale, girls have learned to make a commitment to their troop and themselves, how to develop a sense of responsibility, how to deal with customers in a consistent and polite manner, and to practice the early stages of money management. These are all skills that can be transferred to other parts of their lives as they grow older.

It is important to Greater Essex that the public understands the role of the cookie sale as a program activity. There are not many organizations that can make this statement.

Virginia Reed Brett
Community & Public Relations Director

Givers thanked

To the editor:

During this holiday season, many families and single individuals were helped through generous and concerned citizens and organizations. On behalf of the needy of our township, I would like to thank those special people who contributed in some way toward reaching out to the less fortunate. It is through each and every one of you that we were able to help make their holiday a little brighter.

The following organizations and business professionals made donations: Christian Apostolic Church, Salvation Army, Aerisema Electric, Dr. Leonard Russo, Kiwanis Club, Belleville High School, School Number 10, Clara Maass Volunteer Services, Senior Citizen Clubs, AARP, Olympic Bowling Wed. Noon Ladies Team, Women's Club, Charles Jewelers, Hardman Industries, Belleville Municipal Employees, Everyone at Gruhin & Gruh and anonymous citizens.

Carol Ann Russo
Director of Welfare

Chet endorses Herb

To the editor:

On January 5, 1993, I had the distinct honor and privilege to attend the swearing in ceremony of Congressman Herbert Klein, Democrat 8th District in Washington, D.C. As I observed the ceremony that took place, I was given a chance to reflect and come to a strong opinion on our new Congressman.

It is my view the people of the 8th congressional district have made a very wise choice. Congressman Klein has valuable assets and inherent qualities that are not learned, but gifted to individuals. His honesty, sincerity and compassion for people will make him one of New Jersey's most well respected members in Congress. Congressman Klein campaigned on his qualifications and his record of representation of all the people, not just special interest groups. We the people who have elected Congressman Klein fully know he cannot perform this enormous task without our input and help. I wish to express to our new congressman a helping hand extended in the spirit of cooperation between myself and the Belleville Democratic County Committee. My hearty congratulations and further success to our shining star of the Democratic Party in Congress.

Mr. Chester Prosperi
Belleville Democratic Chairman

Silver Lake wish list

To The Editor,

The Silver Lake Business Council over the past several months has received many ideas and suggestions to add to our ever growing "wish list."

One of these proposals, concerning a Township Grantsman, was reviewed by our Government Affairs Committee.

It should be noted that the Township already has a grant coordinator in the position of Neighborhood Preservation Program Coordinator (Robert Shumayko). Grant coordination is a part of the responsibility of a grantsman. It is based on this that we make the following recommendation.

● A Grants Committee be formed consisting of the Township Manager, the Planning Director, and a Grant Coordinator. This committee would have the combined experience and qualifications superior to an outside consultant.

● The Manager and the Planning Director would act in an advisory and consulting capacity with the Manager as overseer and the Planning Director setting priority needs in community development.

● The current NPP Coordinator position be expanded to Grant Coordinator for the entire Township. The Coordinator would be responsible for the initiation, application and administration of the grants program. This expanded position would, of course, require additional compensation, but not equal to an outside consultant.

While an outsider spreads his loyalty among several towns, an in-house Grant Coordinator would provide Belleville with a dedicated, hands-on mechanism for grant procurement.

Lawrence R. Walsh
Acting Chairman
Silver Lake Business Council

Editor's Note: Mr. Walsh's letter reflects the well founded appreciation of the work performed by Bob Shumayko. The Township Council has voted to rehire the John Bruno Organization as Grantsman, at \$20,000 a year. This should not preclude using the services of Mr. Shumayko as a grant coordinator, in view of the outstanding job he has been doing.

HK

Worthy cause

To the editor:

This past Sunday evening, an affair was held to raise funds for someone who is in need of a van for transportation to school and other medical facilities.

Dr. Noonan, his office employees, and the family of Manny Edwards Brown did a tremendous job to raise about \$10,000 in only two weeks.

Manny was only 12 years old Sunday and all who helped and worked to make this day a happy one for the Brown family did a fine job by donating their time and energy to collect monies for this worthy cause and for a local boy.

Many business, civic organizations, clubs, seniors, the Concerned Citizens for Belleville, came together to honor this fine Belleville child, who is in need. Many people came forward to help in this cause, no matter what. They did it together. Every religion, every color, Republicans, Democrats, it was beautiful.

Manny's grandmother did a fine job, also his mother should be blessed.

In Belleville, we can do it, together. Manny still needs help. Those who didn't give to this fine cause, still can. Send your check to Rhonda Brown, c/o Dr. Noonan, 272 Holmes St., Belleville, NJ 07109.

I was glad to be part of this good cause.

Joseph Fornarotto

Two Belleville pupils win county-wide prizes

The Essex County Fire Prevention and Protection Association has announced 12 winners of its 1992 Fire Safety Poster Contest. Two of the winners are from the Belleville schools.

Winner in the Kindergarten through Grade 2 Division was Patsy Palma of School 10.

Winner of the Grade 6 through Grade 8 Division was Bruce Dad-

dis, a 6th Grader at School 10.

Each will receive a \$75 Savings Bond at a ceremony to be held at 7:30 p.m., Jan. 28 at the Nutley Red Cross Chapter House, 169 Chestnut St.

Fire Captain Bill Hands headed the Belleville committee that selected Belleville's entries in the county-wide competition.

ART GALLERIES ROYALE
300 STUYVESANT AVE.
LYNDHURST, N.J.
438-3075

OIL PAINTINGS
Large Selection On Display
Largest Gallery in New Jersey
Lithographs & Prints
Photos Painted on Canvas
Stock & Custom Frames
Complete Framing Department

GIVE YOUR SPECIAL VALENTINE
A TRIBUTE TO
ENGELBERT HUMPERDINCK
FEATURING
ANGEL BYRD
WITH THE SENSATIONAL
ELLINGTON SISTERS
AT
NEILS NEW YORKER
90 RT. 46 EAST
MT. LAKE, NJ
FOR RESERVATIONS CALL: 201 - 338-9243
FRIDAY, FEBRUARY 12, 1993
DINNER: 7:00 PM • SHOW: 9:00 PM
DINNER & SHOW \$45.00 PER PERSON
SENIOR CITIZEN DISCOUNTS

We build men
from the boy up
Join Boy Scouting,
a program for boys
from 8th - 18th grade
Call 922-2488
9:00AM - 4:30PM
Monday through Friday

STASH'S PARK PUB

We've made some changes at the Park Pub and we'd like you to help us celebrate! Sure, we are the same Park Pub that you know and love but we are newly renovated, have a new menu that is out of this world, and added live entertainment! So stop by today and get in on the fun!

SUPER BOWL PARTY!
Get up off your sofa and celebrate with us!
OPEN BAR
&
SUPER BUFFET
Starts 1 hour before Kick-off
\$40.00
per person
Call today for reservation

THE TROUBLEMAKERS
Live Music Friday & Saturday
NO COVER CHARGE!
\$1.50 14oz. Mugs
ALL NIGHT!

Every Thursday
ACAPPELLA NIGHT
Jan 14th - The Delmonicos
Jan 21st - Magic Moments
Jan 28th - Sound Investment
9:00pm - closing
NO COVER CHARGE!

HAPPY HOUR
This is the place to help you unwind
with good people and great prices!
\$2 BAR DRINKS
\$1 DRAFT BEERS
4pm-6pm

Call (201) 235-0696
789 Bloomfield Ave. Nutley, NJ 07110 (Corner of Kingsland Ave. and opposite front gates of Hoffman-LaRoche)

Stash's Park Pub- It's your kind of place!



"If you're torn between watching your weight and watching your budget I have some very good news for you."

New Pricing Policy

\$9 Program Fee

A Week. Pay As You Go.

You'll still get personal one-on-one counseling sessions, supportive weight management classes and more. Jenny's Cuisine is additional. It ensures you a 100% nutritionally balanced menu plan.

Call Now

JENNY CRAIG

NOW OPEN, BLOOMFIELD!
15 WARD ST. - 680-8282

Individual results may vary • Maintenance/Products optional • Open Saturdays and evenings
Some restrictions apply • © 1993 Jenny Craig International

FRADE'S MEATS • DELI • CATERERS

Land O Lakes American white or yellow Cheese 1.69 1/2 lb.
Home Baked Turkey Breast 2.99 1/2 lb.
Lean Domestic Boiled Ham 3.39 full lb.
Hormel Slicing Pepperoni 2.09 1/2 lb.
Pecorino/Romano Grated macorino Cheese 3.99 lb.
Sandaniello Mortadella 1.99 1/2 lb.
Perdue Chicken Whole or Cut 89¢ lb.

SUPER BOWL SUNDAY
* Party Catering
* Giant Sub 3 - 4 & 5 ft.
* Party Trays Cheese & Cold Cuts
* Hot & Cold Buffet
* Sloppy Joes
* Snacks & Sodas

Perdue Chicken Cutlets 3.29 lb.
All Beef Chopped Meat 1.99 lb.
Home Made Italian Sausage Hot/Cold or sweet 2.19 lb.
Eggs dozen 89¢ Large 99¢ Jumbo
Bottom Round Roast 2.99 lb.
Italian Style Veal Cutlets 5.49 lb.
Bar-B-Q Chickens 2.39 lb.
Perdue Chicken Legs 59¢ lb.
Veal Stew or for Veggies & Peppers 4.69 lb.

311-313 UNION AV. BELLEVILLE • FREE DELIVERY 759-3509

Folk art fish display

The library has mounted an exhibit of hand-carved fish and books about aquarium fish for the month of January. Joan Taub, in charge of the library exhibits, describes the display as "A very colorful break from the cold gray colors of January." Some of the fish are examples of Mexican folk art while others are contemporary American gallery pieces.

The library is always seeking displays of collectibles, the work of local artists, particularly carvings and small constructions, for its second floor display cases. Please contact Joan Taub, between the hours of 9 a.m. and 2 p.m. weekdays, to arrange an exhibit. If you draw, are a painter or photographer with a body of framed work, please contact David S. Bryant to see about a 1994 or later exhibition of your work in the Trustees Room Gallery.

Italian language classes

The Belleville Public Library continues its very popular Saturday morning Italian language classes. These classes, open to the public at no charge, are held at 10 a.m. each Saturday in the Trustees Room of the Main Library. Instructor, Filomena Del Olmo teaches at a pace conducive to learning for new students and intermediate students.

These classes began in 1992 as part of the library's year-long focus on the 500th Anniversary of Columbus' Voyage of Discovery.

To register, call the library at 450-3434.

Tri-County Camera Club exhibit

The work of members of the Tri-County Camera Club will be on display in the Main Library Trustees Room through the month of January. These photographs include wildlife scenes, landscapes, urban signage, and still life. The wide range of images demonstrate the broad areas of interest in contemporary photography. Though Club members travel widely in seeking photographic subjects, the library exhibit includes several recognizable New Jersey locations.

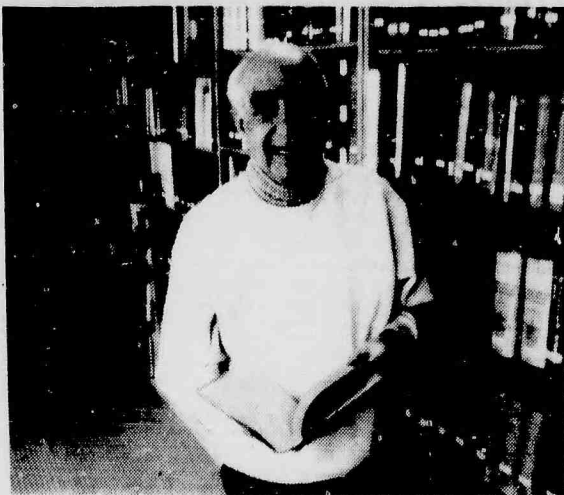
This display is open to the public during regular library hours.

Tax forms at library

The Belleville Public Library will offer a full range of free and reproducible state and Federal tax forms in 1993, for preparation of 1992 income taxes. The reproducible forms can be photocopied at a cost of fifteen cents per page, with a discount for seniors. This library service is combined with available tax assistance for all ages.

For more information, please call the library at 450-3434 during regular library hours.

Book marks



Lecturer, Frank DeLisi, formerly of the Rutgers University staff, will conduct several lectures at the Belleville Library in 1993. The Friends of the Library will sponsor his lecture, "The Assassination Conspiracy" at 1 p.m. on Feb. 10. "The Treason Conspiracy" will also be a Friends sponsored lecture by DeLisi on Feb. 24 at 1 p.m. At 7:30 p.m. on Feb. 25, DeLisi will combine both lectures for an evening audience.

Tax assistance at library

The Belleville Public Library will be a site for two free state and Federal income tax preparation programs beginning in February:

1. The AARP sponsored programs will offer tax preparation assistance to seniors on Wednesdays and Thursdays, 10 a.m.-2:30 p.m., beginning on Feb. 3 and running through April 8. Two AARP trained volunteers will be on site to offer tax preparation. Because demand for this service increases each year, the library requires registration for this service, in-person or by phone at 450-3434.

2. The library will also be the site for tax assistance offered by trained students from the Rutgers University Chapter of Accountants for the Public Interest. This service will be offered to all ages on Thursday evenings, from 6 p.m. to 9 p.m., beginning Feb. 6 and running through April 15. No registration is required.

If you make use of either program, please bring your appropriate information and documents about income and expenses for 1992.

Shafter Branch activities

The Mrs. Richard A. Shafter Branch Library located in School Number Four on Magnolia Street is pleased to announce some of its January activities for children and young people.

Jan. 25, 3:15 to 4 p.m. a Secret Popcorn Movie for children will be shown.

Jan. 29, 3:15 to 4 p.m. there will be a reading from the book, A Wrinkle in Time.

Birds in winter activity

Children will be able to learn about birds in winter through crafts and stories at 1:30 p.m. on Jan. 23 in the James J. Cozzarelli Jr. Children's Room. The program will begin with stories about birds, to be followed by the craft projects of making a bird feeder and a hanging bird decoration. This program will be of interest to children of all ages.

Pizza Hut loses bid for permit

The Belleville Planning Board voted against granting a permit to Pizza Hunt, Inc. for a take-out store

on Joramemon Street, near School 7 and Belleville High School.

Al Schmitt cast the sole vote in favor of the franchiser to establish a new type of fast food outlet in Belleville.

Planning Board Chairman Sam Papa emphasized that opposition to the outlet was based on the additional street traffic that was expected to occur.

Pizza Hut produced a traffic expert to refute claims that traffic overload would occur. One suggestion that left turns be prohibited from Franklin Avenue to Joramemon did not win favor with the Planners.

The firm may go to court in an attempt to overturn the Board's

decision. The vote came after hearings that were spread over a three-month period.

Seton Hall Prep announces honors

Seton Hall Preparatory School in West Orange has announced that Belleville residents have attained scholastic honors for the first trimester of the academic year.

Those earning First Honors with an average of 4.0 or higher include Raymond Escorpizo, German Galindo, Patrick O'Brien and Ronald Vinluan.

Those earning Second Honors with an average of 3.5 or higher included Cicero America, William Brzenski and John Battisti.

Job help offered victims of epilepsy

Persons with epilepsy who are in need of job placement assistance may contact Training Applicants for Placement Success at (201) 456-5872.

Girl Scout Cookie Sale

Belleville Girl Scouts, members of the Girl Scout Council of Greater Essex County, will hold their annual Girl Scout Cookie Sale through March 21. Seven varieties of cookies are available at \$2.50 per box. Money raised helps fund troop programs and activities. For information call the Greater Essex Council at (201) 746-8200. Names will be referred to local troops.

REDUCTIONS UP TO 65%

\$7 CLEARANCE

ENTIRE STOCK OF

- KNITS • BLOUSES
- SKIRTS • PANTS
- WARM GOWNS
- WARM PAJAMAS

VALUES TO \$20

Easy to reach from: Nutley, Belleville and Bloomfield...
Call for directions... 201-998-0122. FREE PARKING!

TERRY SHOPS

576 RIDGE ROAD, NO. ARLINGTON

Mon. Thru Fri. 9:30-8 • Sat. Till 6

Opposite Grand Union

AFTER CHRISTMAS

UP TO 50% OFF!
3 DAYS ONLY!

Thur. - Fri. - Sat.
JANUARY 21 - 22 - 23

SUITS			SPORTSHIRTS		
Reg.	Our	NOW	Reg.	Our	NOW
\$250	\$189	\$137	\$36	\$24	\$18
295	199	\$150	40	34	\$20
300	249	\$175	60	49	\$30
360	299	\$230			
480	399	\$290			
SPORTCOATS			SWEATERS		
Reg.	Our	NOW	Reg.	Our	NOW
\$190	\$149	\$80	\$36	\$29	\$18
240	199	\$125	40	32	\$20
275	229	\$150	53	39	\$26
335	279	\$199			
SLACKS			SHOES		
Reg.	Our	NOW	Reg.	Our	NOW
\$80	\$49	\$35	\$60	\$49	\$35
85	69	\$50	85	69	\$45
95	79	\$60	140	109	\$80
120	99	\$70	160	129	\$95
DRESS SHIRTS			OUTERWEAR		
Reg.	Our	NOW	Reg.	Our	NOW
\$25	\$19	\$16	\$84	\$69	\$45
34	27	\$23	150	119	\$80
39	32	\$25			

'SUIT YOURSELF'
(The Men's Store)

Fashion... Value... Quality... Service

517 Bloomfield Ave. Newark
485-9222

Exit 148 off Garden State Parkway
then 8 blocks East. (on Bloomfield -
Belleville line)
Open Daily 10:00 am to 6:00 pm
Friday 10:00 to 9:00 pm
Saturday 10:00 am to 5:45 pm
FREE PARKING
Minimum charge for alterations.
No layaways for this sale

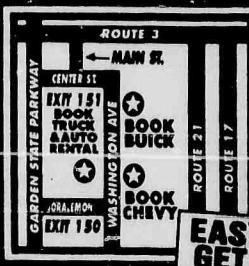
New Buicks

DIRT CHEAP

**We'll Beat Any Bona fide
Deal & Give You Great
Service! It's That Simple!**

BOOK BUICK

BUICK • 66 WASHINGTON AVENUE • NUTLEY 667-0500



EASY TO GET TO!

disclaimer info

EVENTS IN THE AREA

Fairs, flea markets, rummage...

Winter rummage sale, 9 a.m. to noon, Feb. 6, Christ Church, 393 Washington Ave., Belleville. Household goods, clothes, bric-a-brac.

Rummage sale, 9 a.m. to 2 p.m. Feb. 5; 9 a.m. to noon Feb. 6, Wesley United Methodist Church, 225 Washington Ave., Belleville (across from library). To donate, call Lucille Larios at 759-5448 or Carol Smith at 759-6904.

Support Groups...

Narcotics Anonymous meeting list: **BELLEVILLE**: Monday, 8 p.m., Fewsmith Presbyterian Church, Union Ave. and Little St. Openbook/discussion meeting; Tuesday, 8 p.m., Clara Maass Medical Center, 1 Franklin Ave., Branch Brook Room, Education Center. Men's meeting. Open/discussion; Thursday, 8 p.m., Fewsmith Presbyterian Church, Union Ave. and Little St. Openbook/discussion meeting; Friday, 8 p.m., St. Peter's Church, rear basement, Williams St. Open/discussion. **NUTLEY**: Monday, 7:30 p.m., St. Paul's Congregational Church, Franklin Ave. and St. Paul's Place. Closed/speaker/discussion meeting. Open to addicts and those who think they have a problem with drugs; Tuesday, 7:30 p.m., Grace Episcopal Church, 200 Highfield Lane. Women's meeting. Topic meeting/open discussion; Wednesday, 8 p.m., Grace Episcopal. Closed/speaker/discussion. Open to addicts and those who think they have a problem with drugs.

National Recovery, a self-help group for substance dependency, non-religious, non-12 step. Based on self-reliance. 8 p.m. Tuesdays, Montclair YWCA, 159 Glenridge Ave., second floor boardroom. For information, call 759-1316 or 538-1590.

Victim/family survivors of auto related crashes, sponsored by Mothers Against Drunk Drivers, second and fourth Mondays, St. Mark's Church, 45 Main St., West Orange. For information, call 344-4329.

Anorexia, nervosa, bulimia, compulsive eating problems. For information, call 1-800-624-2268.

Drug addicts, 7:30 p.m. Wednesdays, Christian Faith Center, 393 Washington Ave., Belleville.

Criminologic illness support group, 6 to 7:30 p.m. first and third Tuesdays, The Hospice, 34 Label St., Montclair. Separate sessions for families and patients. For more information, call 783-7879.

New Jersey Chapter of NAAFA (National Association to Advance Fat Acceptance, social events, human rights information, monthly newsletter. For more information, write P.O. Box 110203, Nutley, 07110 or call 667-2957.

Overeaters Anonymous, self-help group for compulsive overeaters or people with eating disorders, 8 p.m. Tuesdays, Presbyterian Church on the Green Parish House, Broad St., Bloomfield (7:30 to 9 p.m.); Wednesdays, Christ Church, Park and Bloomfield avenues (opposite Grand Union), Bloomfield (8 p.m.). For more information, call 746-4658; Thursdays, Grace Episcopal Church, 200 Highfield Lane, Nutley (7 p.m.).

Living With Cancer, for cancer patients and their families, 7 to 9 p.m. third Wednesdays, Mountainside Hospital, Montclair. 429-6140 or 429-6128.

Recovery Inc., a community mental health self-help group for persons who suffer from nervous symptoms and fears, 7:30 p.m. Wednesdays, Parks Dept., 44 Park Ave., Nutley. For free literature, call (908) 766-7466.

Make Today Count, a support group for patients and families dealing with cancer and other life-threatening illnesses, 10:30 to 11:30 a.m. second Tuesdays, first floor of Continuing Care Center building at Clara Maass Medical Center, Belleville. For more information, call 450-2210.

Separated and divorced persons, 7:15 p.m. Jan. 21, St. Thomas the Apostle's Parish Center, located below the church at 60 Byrd Ave., Bloomfield. Topic: The Effects of Divorce on Children. For more information, call Father Vic at 338-9190.

Rainbows for All God's Children, a support group for children of single parent homes (ages 4-13). First meeting: 6:30 to 7:10 Feb. 22. Orientation/registration 7:30 Feb. 8 at St. Thomas the Apostle Parish Center, 60 Byrd Ave., Bloomfield. Meetings scheduled for every Monday Feb. 22 through March 29. For information, call Father Vic at 338-9190.

For people who have suffered a loss, first meeting 7 p.m. Feb. 3, St. Mary's Hospital, 211 Pennington Ave., Passaic Park. Open to anyone who has suffered a loss of any kind. Speaker: Mariann Aita, MPA; topic: Shock — The First Stage of Loss. For information and registration, call Marilyn Murphy, R.N., at The Center for Senior Care, 470-3050.

UNBOOKED, for drug and alcohol abuse. Call 643-5050 noon to 7 p.m. Monday through Friday for New Jersey treatment and referrals and substance abuse information. Confidential.

POISON INFORMATION, 1-800-962-1253.

SOCIAL SECURITY 24-hour toll free number, 1-800-772-1213. Live operators on duty 7 a.m. to 7 p.m. Monday through Friday. Other times, leave number. Someone will call you back.

Cancer Response System, 1-800-227-2345, 9 a.m. to 5 p.m. Monday through Friday.

TEEN HOTLINE, a nationwide toll free hotline for homeless and troubled teens and families, 1-800-999-9999.

For singles only...

O.N.E.S., a ministry to single, divorced and widowed persons under the Session of Bethany Presbyterian Church. Non-sectarian. Monthly luncheon 12:30 p.m. Feb. 21. Bring \$5 or food item of equal value for buffet. For information, call 777-2157, 667-5956 or 667-2640.

ACTS, a young adult Catholic singles group for ages 21 to 35. For information, call 759-9194.

Solo Singles, (40 plus), 6:30 p.m. Sundays, Central Presbyterian Church, St. and Morris Ave., Summit. \$2. Bridge, 7:15 p.m. 1st and 3rd Thursdays. \$3. For information, 908-665-2686 or 908-766-1839 6 to 9 p.m. only.

Mix and Mingle, for separated, widowed, divorced men and women 45 plus, 7 p.m. second Tuesdays, Parsippany library, 292 Parsippany Road. \$3. For information, 887-7833 or 335-7068.

Essex County Chapter of COPO, non-sectarian group of widows and widowers, 8 p.m. Feb. 6, hall of Blessed Sacrament Church, 28 Livingston Ave., Roseland. Live music, dancing, mixers, line dancing, refreshments. For information, call 751-3015.

Meetings...

Concerned Citizens of Belleville, 8 p.m. Jan. 21, Elks Club, 254 Washington Ave. Refreshments. To be discussed: tax increases, new budgets. Send 1993 dues of \$2 per member to C.C.B., P.O. Box 353, Belleville if you cannot attend meeting.

Belleville Music Parents Association, 7:30 p.m. Jan. 21, chorus room at Belleville High School.

Rosary Altar Society of Holy Family Parish, 7:45 p.m. Jan. 25, St. Joseph's Center. Installation of officers. New members welcome. Call Barbara Marcantuono at 751-0271 or Carmella Arietta at 235-1678.

Nutley Concerned Citizens, 7:30 p.m. Jan. 26, Parks and Recreation, 44 Park Ave.

Women's Auxiliary Lions Club of Nutley, seeking new members. 7 p.m. first Thursday at Meyer's Bakery, Nutley. For more information, call Betty Lazur at 667-9127 or Louise Beck at 661-2906.

Belleville Kiwanis Club, 6:30 p.m. Thursdays, Branch Brook Manor, Washington Ave., Belleville. For membership information, call Nino Bucciarelli at 751-2110 or Vinnie Sorrentino at 759-6475.

Court Gratia, Court 751, CDA, Nutley Amvets Post 30, 184 Park Ave. Feb. 1: business meeting; Feb. 15: mystery social.

Woman's Club of Nutley, 1 p.m. Jan. 25, clubhouse, 216 Chestnut St. New members welcome.

Evening Membership Dept., **Woman's Club of Nutley**, 8 p.m. Jan. 28, clubhouse, 216 Chestnut St. Program: Living Wills presented by Jean Kalembo, R.N., service education coordinator of Mountainside Hospital Public Relations Dept. Public invited. Refreshments. For more information, call 235-0273.

Chess players, 7 to 11 p.m. Fridays, Bloomfield Civic Center, 84 Broad St. Chess tournaments first Fridays with trophies. Special section for children 6-14. For information, call Arkady Geller at 483-7927.

St. Mary's Youth Group, 8 to 10 p.m. Thursday nights, St. Mary's School gym, Msgr. Owens Place, Nutley. For those in the 8th grade or older.

Tri-County Camera Club, 8 p.m. Tuesdays, Nutley Historical Museum, 65 Church St. For more information, call 761-5591 or 667-3740. Jan. 26: workshop, Models.

Belleville AARP Chapter 2051, 1 p.m. Feb. 4, Fewsmith Memorial Church, 444 Union Ave. Program: Olympic Karate Institute, Roger Wehrhahn, director.

American Legion Auxiliary Nutley Unit 70, 8 p.m., second Monday (except Jan.), Nutley post home, 45 Franklin Ave.

Essex Salon Eight of the Eight and Forty, 8 p.m. third Monday, 45 Franklin Ave., Nutley.

Essex County American Legion auxiliary, 8 p.m. second Thursday (except Jan.), 45 Franklin Ave., Nutley.

White Eagle Unit 448, American Legion Auxiliary, fourth Monday, 41 Broughton Ave., Bloomfield.

Optimist Club of Belleville, 6:30 p.m. Thursdays, Branch Brook Manor, Washington Ave. For membership information, call Gabe Nazzola at 997-2121 or Emil Nardachone at 450-8883.

Ladies auxiliary, Stuart E. Edgar Post 493, VFW, post home, 271 Washington Ave., Nutley. Membership open. Write to auxiliary at 376 Chestnut St., Nutley 07110.

Theosophical Society in America, 2:30 p.m. Feb. 14, Nutley Museum, 65 Church St. Program: The Upanishads. Open to the public.

Fundraisers...

Luncheon, 11:30 to 1 p.m. Jan. 21, Nutley Woman's Club, 216 Chestnut St. Sponsored by Evening Membership Dept. Menu: baked ham, macaroni and cheese, vegetable, gelatin salad, dessert and coffee. \$4.75. For reservations, call 667-7120 or 667-1161.

Linen sale, 9 a.m. to 5 p.m. Jan. 22, 23, personnel conference room, Clara Maass Medical Center, Belleville. Comforters, tablecloths, sheets, towels, bathroom and kitchen accessories. All proceeds to benefit medical center.

Burger King fundraiser for Nutley High School class of 1993, 4 to 8 p.m. Jan. 22, Burger King, Franklin Ave. 20% of profits go to the class to lower prom bids.

A Blast from the Past dance, sponsored by Rainbows for All God's Children, 8 p.m. to midnight Jan. 23, Sacred Heart Church, 76 Broad St., Bloomfield. \$20. Hot and cold buffet, dancing, set-ups, prizes. For information, call Richard Searls at 748-4906 or Gloria Young at 680-4559.

Angela and Vito's wedding, 7 p.m. Jan. 29, Branch Brook Manor, Belleville. Fundraiser for B.A.S.E. (Belleville Association for Substance Education). \$40 per person includes complete dinner, dancing, complete bridal party, family of the bride and groom, live entertainment. For tickets or information, call Ann Lopreato at 759-8313, Grace Purdue at 759-6059 or Barbara Cicalese at 751-4869.

Old fashioned square dance, sponsored by chancel choir, 7:30 p.m. Jan. 30, Fellowship Hall of Park United Methodist Church, Park and Broad streets, Bloomfield. Music by Ramapo Fault String Band with caller. Light refreshments, babysitting. \$5. Tickets from choir members or by calling 429-7745.

Pancake breakfast, 8 a.m. to noon Jan. 31, Knights of Columbus Hall, 98 Bridge St., Belleville. To benefit St. Peter's Church cemetery maintenance fund. Pancakes, sausage, juice, bacon, donuts, coffee. \$4 adults; \$2 children seven to 12. For tickets, call Tom Doeffinger at 751-7144.

Annual Chinese auction, sponsored by Fairview Home and School Association, 7 p.m. Feb. 5, Chandelier, 340 Franklin Ave., Belleville. \$23 includes chicken francaise dinner and 25 tickets to auction block. For reservations, call Rita Daglian at 748-0547.

2nd annual Chinese auction, sponsored by St. Peter's P.T.G., 7 p.m. Feb. 10, St. Peter's School gym, 152 William St., Belleville. \$5. For tickets, call Rosemary at 481-1209, Michelle at 751-6379 or Kris at 751-8638.

Valentine Dance, Bobby Byrnes Night, 8 p.m. to midnight, Feb. 12, Knights of Columbus Hall, 98 Bridge St., Belleville. Limited open bar, bring your own food. Coffee and soda served. \$15. Call Alphonse Rossi or Tom Doeffinger at 751-7144.

Valentine dinner dance, 8 p.m. to midnight Feb. 13, Bloomfield Elks Lodge 788, 296 Bloomfield Ave. Sponsored by ladies auxiliary. \$15 in advance, \$17.50 at the door. For tickets, call Gail at 748-8223 or the lodge at 429-1827.

Annual champagne party and fashion show, 8 p.m. Feb. 19, Immaculate Conception Church, Newark. Sponsored by Rosary Society. Fashions by Dress Barn of West Orange. \$10 includes champagne, punch, sandwiches, tea, coffee, pastry. For tickets, call the church rectory at 482-0619.

Fish and chip dinner, sponsored by St. Mary's Rosary Society, 5 to 7 p.m. Feb. 26, St. Mary's Church basement, 17 Msgr. Owens Place, Nutley. \$8. Catered by Argyle of Kearny. For tickets, call 667-7034 or 667-8698. No tickets at the door.

1993 Entertainment books, \$40. Dystonia Medical Research Foundation, 661-3978 or 956-5351; Good Shepherd Academy, 667-2049 or 667-5081; Sisterhood of Congregation Ahavath Achim, 759-9394; St. Thomas the Apostle Junior H.S. Youth Group, 338-6822; Nutley Lions Club auxiliary, 661-3257; Grace Church, 235-1177.

Other events...

Free health screenings, Montclair Community Hospital, 120 Harrison Ave., Montclair. Appointments mandatory. Call 744-7300 ext. 4296, 10 a.m. to 2 p.m. Monday through Friday. Jan. 23: skin cancer, Dr. Bergamo; Jan. 26: knee problems, Dr. Matthews; Jan. 30: foot problems, Dr. Graziano.

CPR classes, Nutley Chapter, American Red Cross, 169 Chestnut St. CPR recertification: 1 to 3 p.m. Jan. 21, 7 p.m. Feb. 3, 7 p.m. March 3; infant, child and adult CPR, 7 to 10 p.m. Feb. 9, 16, 23. CPR: \$45; recertification: \$20. Pre-registration required. Call 667-3818 9 a.m. to noon and 1 to 4 p.m.

Quarterly meeting, Nutley Historical Society, 8 p.m. Jan. 28, Nutley Museum, 65 Church St. History of Nutley Historical Society and slides of Nutley's past, presented by Jeanne Van Steen. 50th anniversary membership drive planned with many activities for Nutley residents.

Bloomfield Symphony Orchestra, Civic Chorus in sacred concert 3 p.m. Feb. 7, Sacred Heart Church, Broad and Liberty streets. Music by Mozart, Handel, Elgar and Gabriel Nevola. Basket collection.

Nutley Adult School registration, 7 to 9 p.m. Feb. 25, March 1, Nutley High School, 300 Franklin Ave. Three to 10 week courses plus one night seminars. For more information or brochure, call 667-2525.

Weekly duplicate bridge games, sponsored by Bloomfield Recreation Commission, 12:30 p.m. Tuesdays, 7:30 p.m. Fridays, Bloomfield Civic Center, 84 Broad St. Partner provided if necessary.

Class reunions...

Bloomfield 1967, needs volunteers to organize reunion. Call Joyce at 743-1901 or Nikki at 677-9200, ext. 107.

Bloomfield 1963, 1-800-22-CLASS.

Bloomfield 1972, 1-800-22-CLASS.

Bloomfield June 1943, Helen Flannery, 66 Bloomfield High School, 160 Broad St., Bloomfield, 07003.

UPTOWN DANCE
Announces Their
Grand Opening

Featuring Classes in:

STEP AROBICS (low impact)

HIP HOP CLASSES

JAZZ, TAP, BALLET

MOM & ME CLASSES

BALL ROOM DANCE

AND ALSO

CHEERLEADING

★ REGISTER NOW!! ★

390 Union Ave. Belleville NJ 07109
338-5404 or 667-4711

**SUPERIOR PRIVATE CATHOLIC
EDUCATION SINCE 1920**

LACORDAIRE
IN UPPER MONTCLAIR

PRE-K TO 8, COED • 9 TO 12, ALL GIRLS
AFTER CARE AVAILABLE

LACORDAIRE ACADEMY • 155 LORRAINE AVE. • UPPER MONTCLAIR, NJ 07043
GRADE SCHOOL: 746-2660 • HIGH SCHOOL: 744-1156 • CALL FOR BROCHURE

Psychic Readings
by
Jennifer
Reader + Advisor

Pyramid Readings/Crystal Readings
Tarot cards \$10 Palm Reading \$5
Advice for All Problems
Call for Free Question

\$7.50
Tea Cup Reading **460-0621** Lyndhurst

Colleen Larkin to wed David Ciccone next year

Colleen Ann Larkin of Belleville and David Anthony Ciccone of Nutley became engaged on Christmas Eve. The wedding is planned for Feb. 17, 1994.

Miss Larkin, an alumna of Belleville High School, is purchasing

agent with Vac-U-Pack, Lincoln Park.

Mr. Ciccone, an alumnus of Nutley High School, served in the U.S. Air Force. He is with Silk Forest, W. Paterson.



David Ciccone — Colleen Ann Larkin



Lisa Palitto — Dave Aromando

Lisa Marie Palitto, Dave Aromando engaged

Mr. and Mrs. John Palitto of Nutley announce the engagement of their daughter, Lisa Marie, to Dave Aromando, son of Mr. and Mrs. Nick Aromando of Lyndhurst. Miss Palitto, an alumna of Nutley High School, is a secretary with

Panasonic, Secaucus.

Mr. Aromando, a graduate of Lyndhurst High School, is the owner of Mondo Music, Lyndhurst. An August 1994 wedding is planned.

Samantha Harris to marry Richard P. Kunz

Announcement has been made of the engagement of Samantha Harris, daughter of Mr. and Mrs. Haydn Harris of Nutley, to Richard P. Kunz, son of Mrs. Phyllis Kunz of Nutley and the late A. Richard Kunz.

The troth was made known Dec.

5. The wedding is planned for October of 1994.

Miss Harris is an administrative assistant with Bobst Group Inc., Roseland.

Mr. Kunz is a mason apprentice with Sans Construction Co., Nutley.



There are no small victories in the fight against heart disease.

American Heart Association

© 1992 American Heart Association

Guancione-Palmisano troth is announced

Mr. and Mrs. Joseph Guancione of Cedar Grove announce the engagement of their daughter, Denise Marie, to Rocco Palmisano, son of Mr. and Mrs. Antonio Palmisano of Nutley.

Miss Guancione, an alumna of Cedar Grove High School and Centenary College, earned a degree in fine arts at Montclair State College, Upper Montclair. She is employed as an artist.

Mr. Palmisano, a graduate of Nutley High School and Montclair State College, is with Capalbo's Gift Baskets, Nutley.

An Oct. 17 wedding is planned.

Friendly Visitors meet Jan. 21 at Fewsmith Church

The Friendly Visitors Program of Community Mental Health Services of Belleville, Bloomfield and Nutley, will begin its series of volunteer meetings 2 p.m. Jan. 21 at Fewsmith Memorial Presbyterian Church, 444 Union Ave., Belleville.

Montclair attorney Constance Bourne, who is an elder law attorney, will speak on gift bequests which can be the answer when preparing a charitable donation from one's estate will.

Charitable donations as gift bequests may be directed towards a program such as the Friendly Visitors. The program has received gift contributions during its Friends of the Program drive, although the gift bequest may be presented at any time. Funding of the Friendly Visitors Program could move to a

new level through gift bequests.

The volunteer meetings are open to the public to access information from scheduled speakers. Men and women interested in joining the volunteer group are always welcome at monthly volunteer meetings.

New volunteers are introduced to the program through a brief orientation session. Daytime and evening orientation appointments are available.

Friendly Visitors volunteers provide a friendly visit, grocery shop or a daily reassurance telephone call to the older adult population of Belleville, Bloomfield or Nutley. Anyone interested may contact the Friendly Visitors Program at 450-3135.



CHORUS DONATION — The Chorus of Communities, a regional choral group, donated the proceeds from its December concert to Clara Maass Medical Center to help fund a clinical pastoral education program. From left, Shirlee Sherman, a Chorus of Communities board member, presents a check to Father Arthur Schute of the Pastoral Care Department at Clara Maass.

EXERCISE

Does Your Heart Good.

American Heart Association



FAT IS FATTENING!

Lean Line's "NEW PROGRAM" Gets right to the Fat of the Matter.

Lean Line's new program, based upon scientific findings, will show you how to lose weight without denial by eliminating fat from your fat cells. Pay only \$10 with this ad. Includes registration and 1st meeting fee. Join Lean Line today!

STILL ONLY \$10 WEEKLY

leanline™ Weight Loss Program

1-800-624-3108

EXPIRES 1-31-93

BLOOMFIELD
Essex Manor
41 Broughton Avenue
Tues. 7:15 PM

NUTLEY
American Red Cross
169 Chestnut Street
Mon. 7:15, Tues. 9:15 AM

DOES THE SAME FOR YOUR ARTERIES THAT IT DOES FOR YOUR BRAIN.

This could lead to a blockage you'd need more than a plumber to fix. To learn more, contact your nearest American Heart Association.

You can help prevent heart disease and stroke. We can tell you how.

American Heart Association



This space provided as a public service. © 1992 American Heart Association

SINUS CARE GROUP

State of The Art Treatment For Nasal and Sinus Disease

DIAL 56 SINUS 667-4687

Bruce E. Gordon M.D. Arthur I. Lester M.D.

562 Kingsland St., Nutley 235-1400

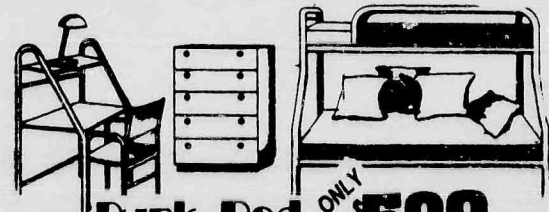
5 Franklin Ave., Belleville 759-4005

39 Seely Ave., Kearny 997-2347

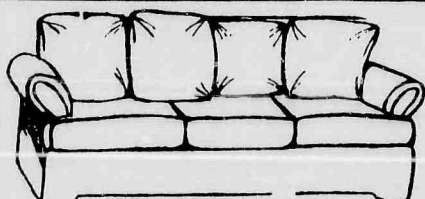
FURNITURE BROTHERS

105 WASHINGTON AVENUE, BELLEVILLE, (201) 751-8811

CALL FOR HOURS OPEN 7 DAYS FINANCING AVAILABLE

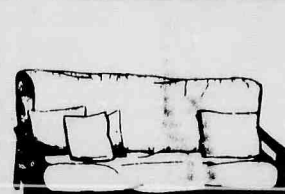


Bunk Bed Grouping ONLY \$599 reg. \$799



Sofa Contemporary Pillow Back

ONLY \$369 reg. \$499



FUTON complete with 2 Pillows & Jumbo Mattress

ONLY \$369 reg. \$499



5pc. ONLY \$299

GRAND UNION

SAVE WITH RED DOT SPECIALS!

ADVERTISED AND UNADVERTISED - IN EVERY AISLE!

DAY-IN, DAY-OUT SAVINGS!

WITH OUR LOWER EVERYDAY PRICES!

An exclusive
offer for our
Grand Union shoppers!

CRANBERRY
VISIONS

NON-STICK
COOKWARE
BY CORNING

SEE STORE FOR
DETAILS

Perdue
**Chicken
Leg Quarters**

Lb. **69¢**

California - Excellent Source of Vitamin C

**Navel
Oranges**

4-Lb.
Bag

199

**SUPER SAVINGS
WITH THIS COUPON**

SUPER COUPON

Frozen - 5 to 7-lbs.

Grade 'A' Turkey Breast

Lb. **89¢**

Coupon Good Jan. 17 Thru Jan. 23.
Limit One Coupon Per Family.

**GRAND
UNION**

Assorted Varieties
**Keebler
Wheatables**

2 <sup>7-oz.
Pkgs.</sup> **\$3.**

Individually Wrapped - Yellow or White

**Grand Union
Singles**

1-Lb.
Pkg.

199

Regular or Diet Sprite,
Cherry Coke, Caffeine Free Coke or
**Coke Classic
or Diet Coke**

2-Liter
Btl.
Plus Deposit
where req.

99¢

PRICE CUT & FROZEN!

Assorted Varieties
**Aunt Millie's
Spaghetti Sauce**

26-oz.
Jar

149

**'TIL
EASTER**

PRICE CUT & FROZEN!

Regular
**Apple Dandy
Apple Juice**

Half
Gal.
Btl.

129

**'TIL
EASTER**

PRICE CUT & FROZEN!

Assorted Cuts
**Pomi
Imported Pasta**

2 <sup>1-Lb.
Pkgs.</sup> **\$1**

**'TIL
EASTER**

SUPER COUPON

Chilled Orange Juice - Regular or Homestyle

**Tropicana
Pure Premium**

One
Half Gal. Cont.

199

With This Coupon And Purchase Of \$5.00 Or More. Coupon
Good Jan. 17 Thru Jan. 23. Limit One Coupon Per Family.

**GRAND
UNION**

SUPER COUPON

from Maxwell House

**Master Blend
Ground Coffee**

One
11.5-oz.
Can

99¢

With This Coupon And Purchase Of \$5.00 Or More. Coupon
Good Jan. 17 Thru Jan. 23. Limit One Coupon Per Family.

**GRAND
UNION**

SUPER COUPON

Assorted Flavors

**Sealtest
Ice Cream**

One
Half Gal. Cont.

159

With This Coupon And Purchase Of \$5.00 Or More. Coupon
Good Jan. 17 Thru Jan. 23. Limit One Coupon Per Family.

**GRAND
UNION**

GRAND UNION

Prices effective Sunday, Jan. 17 thru Saturday, Jan. 23. In order to assure a sufficient quantity of sale items for all our customers we reserve the right to limit sale to 3 packages of any item unless noted. Not responsible for typographical errors. For consumer information or assistance call toll free, 1-800-221-1835.

Belleville

SPORTS

Caruso among 8. '82 Girls crew to be honored

Gibbons, Johansen inductees

By Mike Lamberti

Eight (not seven) individuals and one team will be inducted into the Belleville Hall of Fame at the annual dinner set for Friday, February 26 at the Chandelier.

It was noted in last week's issue that seven individuals had been selected, but the Hall of Fame committee has advised the Belleville Times that there are eight inductees. The missing athlete from last week's issue is Laura Caruso, a standout basketball and softball player at Belleville High from 1984-87.

Caruso joins Carolana Salerno, the late William Bennett, Dave Rothwell, Richard Ruffalo, Brian Cook, Desiree Johansen and Michael Gibbons in the class of '93.

The 1982 Belleville girls' crew team, which won a national championship for coaches Sam Glufirda and Scott Fabian, will also be inducted. It's the second team to receive Belleville Hall of Fame honors. The 1976 boys' crew team, a senior eight shell, was inducted in 1985.

Last week, we began a profile of the inductees by looking back at the careers of Salerno, Ruffalo and Cook.

This week, the profile continues with Johansen.

A 1986 graduate of Belleville High School, Johansen defined the term "class act".

She was one of the hardest working athletes ever to grace the Blue and Gold of BHS. She was a fine tennis, basketball and softball player. As far as softball honors are

concerned, she was a first team, NNJIL shortstop, an all county, all area and all state player and a four year starter for the Lady Buc softball team.

Not so coincidentally, the Lady Bucs put together a 97-21 record during Johansen's career from 1983-86. Johansen was a third baseman as a freshman and had a tough assignment at the hot corner.

Johansen was replacing an all state player in Nancy Coffey, who had been graduated after the 1982 campaign. As a freshman, she was named a starter at a difficult position by coach Carl Corlino, and she came through with flying colors.

Johansen played the position flawlessly and helped the Lady Bucs to a second straight county championship. She moved to shortstop in her sophomore year and was marvelous. Belleville appeared in the county championship game from 1984-86 and also competed for state sectional and conference titles.

As a basketball player, Johansen scored a career high of 30 points in a game against Passaic in January of 1985. She was the leading scorer on the '84-85 team and the team captain of the '85-86 team. Head coach Karen Fucello often praised Johansen as one of the hardest working athletes she's ever seen.

Johansen made a big sacrifice in her senior year, moving to the point guard position to help stabilize a young team which needed leadership. Johansen's play at the point helped future Belleville stars Sim-

mons Edwards and Laurie Dondarski learn the ropes of the varsity game. Edwards and Dondarski were freshman that year.

Johansen went on to play softball on the college level and attained an All American status in her senior year, 1990. A tremendous student, Johansen was in the top five percent of her class at Belleville High.

While nothing came easy for her, Desiree never met a challenge she wouldn't tackle. Parents of future Belleville athletes should have the opportunity to speak with Desiree Johansen. She is an All American in every sense of the word.

A phenomenal athlete, Michael Gibbons starred at Belleville High School in football and wrestling. He was graduated in 1985.

Gibbons is probably best known for his wrestling prowess, but let's not forget his football career.

Gibbons was a running back for coach John Senesky. He played varsity in 1983 and '84 and was a study of speed and power.

Gibbons was a first team all county and area running back. He was also a standout nose guard on defense and earned post season honors there, too.

He played on the last Belleville football team, to date, to compete in the state playoffs. The 1984 Bucs jumped out to a 6-1 start and Gibbons was one of the main contributors. A rash of injuries slowed down that team, but it didn't take away from the fine season Gibbons produced.

On the mat, Gibbons was

phenomenal. He won two county championships, three district and two regional crowns, competing at 171 and 188 pounds. He finished fourth in the prestigious state tournament in his senior year.

While in high school, Gibbons won the AAU national championship in the junior olympic class.

On to college, records were broken quickly as Gibbons starred at Central Connecticut State University. His four year record was an eye popping 130-17. He was inducted into the "Who's Who in College Sports", 1989 edition.

He was an All American, Division I wrestler.

Also on the college level, Gibbons was the New England, Division I champ four years in a row, a qualifier for the NCAA championship for four years, he was ranked ninth and tenth in the country at the 167 and 177 pound level and took sixth place in the Canada World Freestyle championships.

Gibbons competed for a spot in the 1988 Olympics and was defeated by the eventual gold medal winner, Dave Schultz).

Gibbons is the all time leader in victories at Central Connecticut State. He will always have a place in the heart of Belleville, where he excelled for three years on the high school level.

Next week, a continued look back at the Hall of Fame inductees. By the way, if any of the readers have pictures or further information they would like submitted, please do not hesitate to contact Mike Lamberti at 759-3200.

The Cobras, a division one team in the Belleville Soccer Association and sponsored by Viola Brother's Lumber, battled one of the stronger teams in New Jersey and tied the Ironbound Strikers, 0-0.

The game came on the heels of Belleville's first win of the season, a 6-1 triumph over Jersey City. For the season, the Cobras are 1-1-3.

In the Jersey City game, the Cobras started slowly, with injuries slowing down the chemistry of the team. Belleville picked up steam as the game progressed and won with Stan Saja scoring the hat trick and adding two assists.

Matt Kastner and Rocco Constantino tallied two and one goal respectively. Nikolai Castro had three assists.

Although Belleville won by a comfortable margin, the team did not play especially well, and head coach Tim Cook advised his team accordingly after the game was over.

Against Ironbound, the result was much different even though the final decision was not a win. The Cobras displayed a great deal of intensity, effort and execution. A capacity crowd was pleased with Belleville's effort against one of the leagues highest scoring teams.

Goalkeeper Mike Percio played perhaps the best game of his soccer career in blanking Ironbound. Team captain Steve Vogel, Kastner and Saja played solid defense, double teaming the opponent at every opportunity and not allowing opposing forwards to get a clean shot on goal.

Belleville had chances to win with Greg Groelling and Redy Perez displaying speed and courage while blasting shots at the Ironbound goalie.

Although the game ended in a tie, the Cobras should be congratulated on a marvelous effort against a very good team.

JUNIOR BUC WRESTLERS IMPROVE TO 2-0

The Junior Buc wrestling team has posted big road wins against Glen Ridge and Millburn. The defending Essex County league champions blasted Glen Ridge by an 86-6 count and recording 12 pins in the process.

Pinner included Dave Ilaria (2:40), Tim Hands (.20), Greg Ilaria (1:35), Anthony Conte (.53), Frank Zarro (1:30), Lou Scanzillo (.59), Mike Blase (.59), Mike Gonzalez (.59), Jim Palo (.40), John Fitzgibbon (.45), Chris Zarro (.51) and Joe Spina (1:40).

The Junior Bucs have put together a record of 46-1 over the past five years. Coaches Lou Riccardi and Mike Conte were looking forward to the tough Caldwell tourney and a quad scrimmage in Clifton to prepare for the always tough Bloomfield team. That match is set for tonight, at Bloomfield.

The remaining home matches are against Livingston on January 28, Cedar Grove on January 30 and Maplewood on February 6. All matches are at Belleville High. The Livingston match starts at 7:30 p.m. while the Cedar Grove and Maplewood battles commence at 3:30 p.m.

KAREN FUCCELLO, CONTINUED

Back to the Karen Fucello era. When we last discussed Fucello's coaching career, we were beginning the Jennifer Apicella, Dina DeAquino and Loreli Wells era.

After a 15-7 record in 1980-81, Fucello had plenty of optimism that the '81-82 team could set a school record for most wins in a season by a girls' basketball team. The old mark was 16, set back in the 1978-79 campaign.

If you were a fan of the Lady Bucs in the early 80's, you'll probably remember the 1981-82 season was a wild one. It was whacky because Belleville did not have a consistent home court on which to play on.

The gymnasium at Belleville High School had major leaks in the roof and every time it rained, the floor would become soaked and there was a big fear of the gymnasium floor buckling beyond repair.

Consequently, many of the games were moved to the Junior High School gym, and if you know that facility, you know that three dribbles down court is a fast break. You should also know that out of bounds in the junior high is two steps past the line.

Anyway, the fast breaking Lady Bucs enjoyed the pace of the junior high and were hard to beat there. Apicella was already closing in on 1,000 career points, having scored 457 in her freshman year over

(continued on page 13)

DeWork closing in on 1,000 milestone

By Mike Lamberti

Barring injury, senior forward Dennis DeWork will become the seventh player in the history of Belleville boys' basketball to eclipse the 1,000 point mark this week.

The Bucs split two games last week, defeating Paramus Catholic 55-51 and falling to Teaneck 75-56. Don Roll's team was 3-5 heading into last Tuesday's game at St. Joe's. Tomorrow, the Bucs are host to Paramus, starting at 7:30 p.m. Next Tuesday, Hackensack travels to Buccaneer Garden for a 4 p.m. start.

DeWork, who needed 14 points to reach 1,000 last Tuesday at St. Joe's, would become the seventh player in boys' basketball history to reach 1,000 and the eleventh in Belleville basketball history to do so. Currently, Ted Socha (1984-88), Abdel Anderson (1972-75), Wayne Buset (1978-81), Phil Colalillo (1980-84), Leon Puentes (1984-88) and Troy Talmadge (1989-92) have cleared the barrier for the boys.

Jennifer Apicella (1980-84), Simone Edwards (1985-89) and Laurie Dondarski (1985-89) are members of the elite club for the girls'

program, with Apicella, of course, the all time leading scorer with 3,105 points.

DeWork moved closer to the mark by scoring 22 points in leading Belleville to a four point win at Paramus Catholic.

The Bucs, who were playing without coach Roll for the second game due to the coach being ejected from the Don Bosco contest, trailed entering the fourth quarter but rallied back thanks to big scoring efforts from DeWork and Ken Johansen.

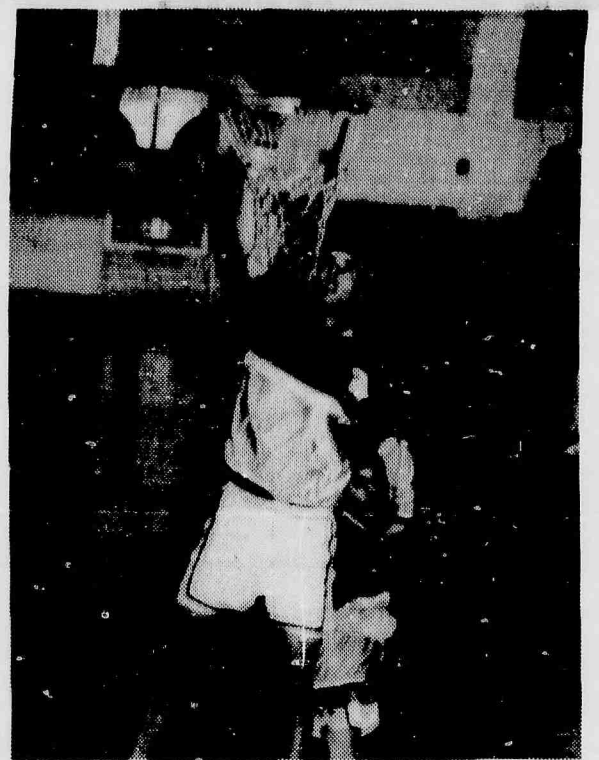
The Bucs led 22-18 after one quarter and 30-29 at the half. Paramus Catholic regained the lead, 40-38 after three but the Bucs showed a great deal of character by rallying in the final frame and win on the road.

Johansen finished with 18 points while Mike Mundy had six, Frank Means scored four, Kevin Johansen finished with three and Mike Christy tallied two.

Paramus Catholic was led by Brian Pirone, with 22 points and Billy Young, who had ten.

"We played a strong game," assistant coach John Fortunato

(continued on page 12)



Dennis DeWork needed just 14 points to become latest member of 1,000 point club.

AC, Mannion, Ramirez lead Lady Bucs

By Mike Lamberti

Paramount toward the success of the Lady Buc basketball team is the performance of senior forward Colleen Mannion. After a slow start, which can be attributed to a shin injury and a bout with the flu, it appears that Mannion is returning to form.

That sigh of relief you heard came from head coach Cheryl Mannion, who is quite happy to have Mannion back in the groove. Last week, Mannion tallied 27 points in two games and not so coincidentally, Belleville split its last two games of the week, beating Teaneck and falling to Paramus Catholic.

The week started with a tough 45-42 loss at Columbia in an out of conference matchup.

Belleville will take a 3-6 record into tomorrow afternoon's contest at Paramus. Tip off time is 4 p.m. Next Tuesday, the road show continues at Hackensack, also at 4.

In the game at Columbia, Belleville started out slowly and trailed 14-6 after one quarter. The Lady Bucs

narrowed the lead to 24-21 at the half, but Columbia came out strong in the third and reasserted a six point lead, 34-28 heading into the final eight minutes.

Belleville chipped away at the deficit and came within three points in the final seconds of regulation time. Mannion took a shot at the buzzer which circled the rim, but fell out.

"We just haven't been playing well lately," Mannion said. "We haven't been consistent offensively. (Liz) Ramirez and (Andrea) Curran have been consistent for most of the season, but we need more points from the forward and center position."

The game also marked the debut of freshman Marie Acuna at point guard.

"Marie did a good job," Mannion said. "It's not easy for a freshman to run the point, especially taking over in the middle of a season. But she worked hard and did pretty well."

Ramirez continued her fine play with 20 points. Curran scored ten,

Mannion had seven, Acuna tallied four and Adrienne Walsh had one point.

Against Paramus Catholic, Belleville fell behind early and was not able to make up the deficit.

P.C. led 16-10 after one quarter and 30-17 at the half. Any chance for a comeback in the second half was quickly rubbed out when P.C. outscored Belleville 23-10 in the third quarter. Belleville did stage a mini comeback in the final quarter, but it only lowered the final deficit to 20 points.

"We started off playing well," Mannion said, "but Paramus Catholic shot the ball well and we weren't converting layups. We also did not score points in the paint, and we need that low post scoring."

Mannion had her best game of the season, tallying 18 points. Ramirez scored 14, Curran had six, Mary Campbell finished with three and Acuna had two.

Belleville snapped a four game losing streak last Thursday by winning at Teaneck for the second

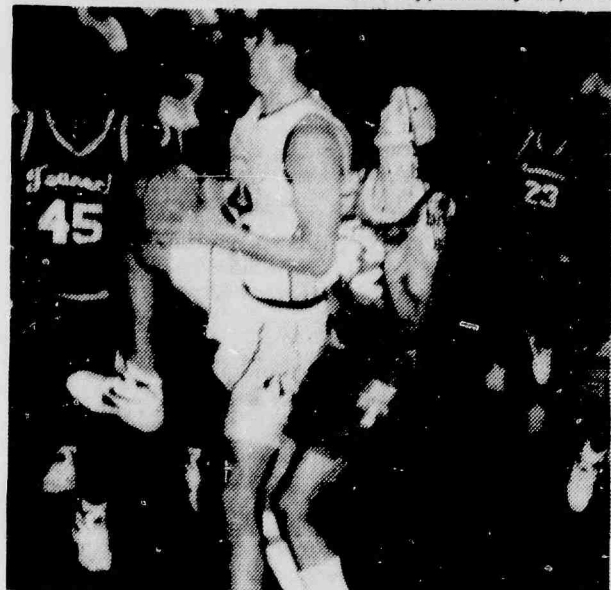
straight year. The final score was 33-30, and although the game wasn't very artistic, Marion will take the win.

"We should have won by more," the coach said. "We have more experience and we should have taken control. Their press bothered us and it shouldn't have. Teaneck has a young team which is rebuilding. The girls know they should have played better."

Nonetheless, the Lady Bucs won, outscoring Teaneck 13-7 in the first quarter and 8-5 in the third. Teaneck outscored Belleville in the second and fourth frames, but key baskets down the stretch kept Belleville in front.

Ramirez, Curran and Mannion scored 31 of Belleville's 33 points with 12, 10 and nine points respectively. Campbell scored the other two points.

"With Colleen playing better, we have three players who can score consistently," Mannion said. "If we can get more points from the center position, I'm pretty sure we can be pretty competitive in the league."



Dennis DeWork pulls down rebound during game against Teaneck.

RECREATION ROUNDUP

Preschool registration

The Belleville Department of Recreation & Cultural Affairs is accepting registration for the preschool play program for 4 year old children. The program consists of games, stories, songs, art, outside play when weather permits, short rest periods and occasional holiday parties especially designed for preschool children.

A session is from 9 a.m. to 11 a.m. or 12:45-2:45 p.m., five days a week with class limited to a maximum of 23 students in each session. The cost of the 32 week session is \$125. The mothers of the children accepted must participate by serving one duty day about every 8 or 9 days according to a published schedule. School will begin on Sept. 20, 1993 and will run through May 1994.

Children born between Oct. 1988-Sept. 1989 who will enter kindergarten in Sept. 1994 are eligible. Participants must be Belleville residents. Since there are just a limited number of openings, applications will be accepted on a first come-first served basis only.

Children must be able to speak

and understand English in order to participate. Children enrolled in the morning program cannot also be in the afternoon program or vice versa. A \$25 deposit is required to hold your spot in the program.

For further information and enrollment, contact the Belleville Recreation Department at 450-3422 as soon as possible, Monday-Friday 8:30 a.m.-4 p.m.

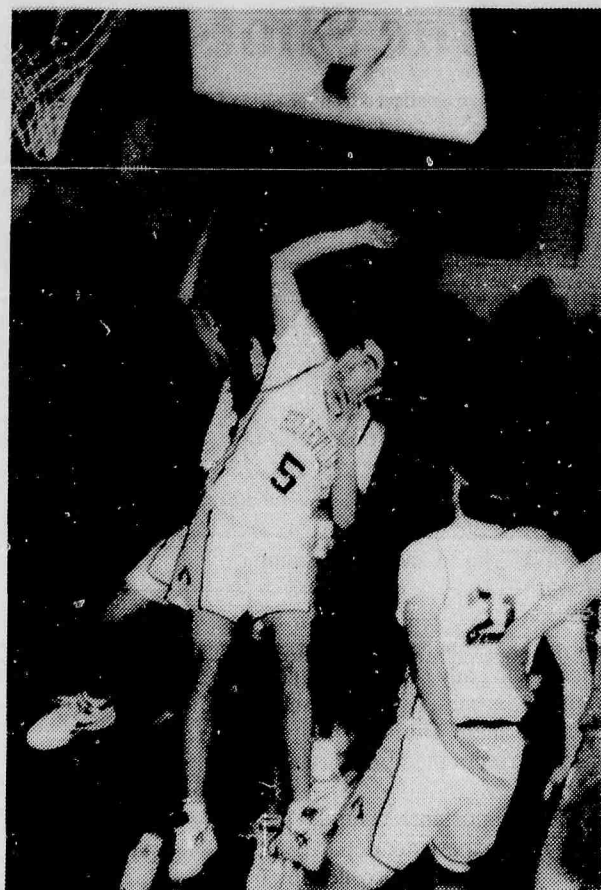
Softball clinic

The Belleville Recreation Department will again be sponsoring a Girls' Softball Clinic for resident Belleville girls who are students in grades 7-12. This program will be held on Fridays at Middle School Girls' Gym from 6 to 8 p.m. on the following dates: Jan. 22, 29; Feb. 5, 26; and March 5. The intent of this clinic is to prepare girls who plan to try out for the Suburban Girls' and/or the High School Girls' Softball teams.

Each session will be supervised and an aspect of the game will be demonstrated and practiced. The focus will be on throwing, catching, running and pitching (no hitting). This clinic will provide all interested girls with an opportunity to better learn the game of softball. Participants must provide their own gloves and must wear sneakers. No advance registration is required.



Kevin Johansen takes free throw during home game against Teaneck.



Mike Mundy (5) battles for position during tough NNJIL game last week.

Boys basketball team splits two contests

(continued from page 11)

said afterward. "We challenged the kids to respond in the fourth quarter of a close game on the road and the kids came through. This was a big win for us."

Belleville returned home last Thursday to face the Highwaymen of Teaneck. It was also Roll's return to the sideline but the occasion was not a happy one as the Bucs fell behind early and lost by 19

points.

"We committed 17 turnovers in the first half," Roll said. "We didn't get second shots and we didn't adjust to their fast break game. They were releasing a guy on the break following a missed shot and we didn't adjust to it."

Teaneck led 19-13 after one and 38-23 by the half. The Bucs came out strong in the third quarter and scored more points (26) than they had the entire first half. But

Teaneck met the challenge by scoring 24 and the Highwaymen were able to keep the lead in double digits.

In the fourth quarter, the Bucs managed just seven points and weren't able to narrow the deficit any more.

DeWork scored 19 to lead Belleville. Mundy had 12, Ken Johansen finished with 11, Kevin Johansen scored seven, Means tallied six and Christy scored one.

Teaneck was led by Corey Goodall, who scored 22 points. Giovanni Hernandez finished with 19.

Despite some erratic play, Belleville has a chance to qualify for the state tourney. The Bucs must be at, or above, the .500 mark by the end of January. If the team can string some consistent performances together, there's no reason to believe the Bucs can't achieve that goal.

Grapplers even record at 3-3

By Joe Plegaro

Inexperience. It's a word overused in athletics these days. Most fans and coaches attribute losses or bad performances to inexperience.

But every now and then, a team does pop up which suffers from a lack of experience, not from an abundance of excuses.

This year's edition of the wrestling team is stricken with the malady of inexperience. It shows in every dual meet and tournament. This week was no exception.

After beating Clifton 49-21, and Paramus 36-27, Belleville gave away a 33-29 heartbreaker to Elmwood Park. Belleville's powerful lower weights began each meet by giving BHS a large lead. Then the middle and upper weights started giving it back with alarming generosity.

John Perna, Isaiah Cardinale and Josh Cardinale each added three wins to their respective records. But the rest of the lineup was inconsistent and shaky from the 125 pound class on up.

Mark Bianchini looked great against Clifton and Paramus, but lost a one point decision at Elmwood Park after surrendering three penalty points for false starts.

Luke Cardinale got his varsity baptism against Clifton and lost a two point decision. Then he lost another two pointer on Saturday against Elmwood Park. The youngest of the Cardinale family, Luke was just inches away from turning each bout around, but couldn't

finish his moves against more experienced opposition.

Enrico Della Merced also lost two hard fought decisions at Clifton and Paramus. The personable junior had less than a half dozen varsity matches to his credit prior to the start of the season. It showed as he looked lost at times while attempting to escape or maneuvering for a takedown.

Anthony Frantantoni and Frank Jablonski, both JV wrestlers with no varsity time, were overpowered in their debuts by far more seasoned grapplers. Jablonski was especially at a disadvantage as he never stepped on a mat until this year.

Add to the lack of experience a puzzling and erratic performance by a few veterans, and you have all the reasons you need to explain the 3-3 record.

Team captain Carlo Ritacco, while 7-4, has been solid one day, lethargic the next. Senior letterman Bob Gauthier has put up some gutsy matches, but has been mak-

ing a ton of mistakes in his execution.

Even Joe McNish, a returning starter from last year's squad, has looked tired and winded in the second and third periods of every bout so far this season.

There is a great deal of work to be done with the 1992-93 team, but the coaching staff is still hopeful for an NNJIL title and possibly a district championship.

Head coach Joe Nisivoccia and assistants Mike Iuliano and Marc Paravecchio have been burning the candle until the wee hours, drilling and conditioning the team. Hopefully, it will all pay dividends by the end of February.

THIS & THAT: Wrestler of the Week goes to Joshua Cardinale. The team co-captain has hit his stride and flattened all three of his opponents last week. Now at 9-1 for the season, Josh has 70 career wins, placing him alone in ninth place on

(continued on page 13)

**FOR JANUARY 1993
ONLY \$15.00**

N.J. INSPECTION
(HOURS: 9-10:00) WITH TIRE, OIL

**Ol' Betsy
Auto Repairs**

Over 30 Years Experience
• Snow Plowing
• Guaranteed Auto Repairs
• ASE Certified Mechanic
• Lifetime Guaranteed Brakes
• N.J. Inspection
Lifetime Guarantee on Brakes

504 Washington Ave.
Belleville, N.J.
(201) 759-5561

ASE

AUTO LOANS!

No Credit?

Bad Credit?

WE FINANCE EVERYONE!

New & Used Cars & Trucks!
260 Available Now!

**CALL 1-800
CAR LOAN**

**CUSTOM PRINTING
AND EMBROIDERY**

SWEATS • JACKETS • TEES

TEAM UNIFORMS

**FROM FACTORY
TO YOU!**

NATIONAL SPORTSWEAR

900 CORTLAND ST. BELLEVILLE, NJ 07009

(201) 759-2005

United Artists
Channel 20

OBC-TV
OUR BEST CHOICE

Suburban Cable
Channel 36

OBC-TV Schedule

THURSDAY 12193

5:30 p.m. - Wrestling Tracks
U.S.A.-Wrestling News
6:00 p.m.- The Theresa Nance
Show-News of Concern to Area
Viewers: Kwanzaa
6:30 p.m. - The 11th 12 Hour-
A Condensed Version of our Sat.
Night Show
7:00 p.m. - Meet Your Mayor:
Passaic
7:30 p.m. - Special
8:00 p.m. - Film Flicks & Video
Pix-Reviews of Films & Videos
8:30 p.m. - Middle Eastern TV-
Programming for the Middle Eastern
Viewers
10:00 p.m. - The Uncle Floyd
Show-Zany Comedy with Uncle
Floyd
10:30 p.m. - Affairs of State
hosted by Joe Mecca
11:00 p.m. - Video Spotlight
FRIDAY 12293
5:00 p.m. - Astrology Today

(Repeat of Tuesday's Show)

6:00 p.m. - Sudzin Country Videos
7:00 p.m. - Film Flicks & Video
Pix
7:30 p.m. - Look and Live Ministry
8:00 p.m. - Front Page Edition
8:30 p.m. - Pro Wrestling Today:
Picks & Previews of Pro Wrestling
9:00 p.m. - Final Score
9:30 p.m. - Wrestling Tracks
U.S.A.
10:00 p.m.- The Uncle Floyd
Show
10:30 p.m. - Power Play
SATURDAY 12393
10:30 a.m. - Front Page Edition
11:00 a.m. - The Theresa Nance
Show: Rev. Dr. Gilmore
11:30 a.m. - The Final Score-
Pro Sports Handicapping
12:00 noon - Pro Wrestling Today
12:30 p.m. - America's Backyard-

Home Fix-It & Gardening Tips
10:00 p.m. - The Uncle Floyd
Show
11:00 p.m. - The 11th Hour Comedy
Show
SUNDAY 12493
10:00 a.m. - Fiances-Mary Kay
Cosmetics
10:30 a.m. - Pro Wrestling Today
11:00 a.m. - The Final Score
11:30 a.m. - Health
Issues-Interviews with Area Health
Professionals: Health Cross
12 noon - Meet Your Mayor:
Belleville
12:30 p.m. - America's Backyard
MONDAY 12593
4:00 p.m. - OBC Game of the
Week (Wrestling) Lodi/Elmwood
Park
8:00 p.m. - Front Page Edition
8:30 p.m. - Health Issues
9:00 p.m. - Affairs of State hosted
by Joe Mecca
9:30 p.m. - Film Flicks & Video

Pix
10:00 p.m. - The Uncle Floyd
Show
10:30 p.m. - Power Play-Music
Videos That MTV Doesn't Play
TUESDAY 12693
6:00 p.m. - Sing Along New
Jersey-See Club Goers Sing to their
Favorite Songs
6:30 p.m. - The 11th 12 Hour
7:00 p.m. - OBC Game of the
Week (Wrestling) Lodi/Elmwood
Park
9:00 p.m. - Astrology Today hosted
by Steven Joseph Sinopoli. Life
Call-In
WEDNESDAY 12793
7:30 p.m. - Final Score
8:00 p.m. - Power Play Country
10:00 p.m. - The Uncle Floyd
Show
10:30 p.m. - Sing Along New
Jersey
11:00 p.m. - Meadowlands Show-
case

Buc Shots

(continued from page 11)

21 games.

Now a sophomore, Apicella was beginning to dominate. The first sign that she was a phenomenal talent came in the championship game of the Essex County Holiday tournament in late December of 1981.

Jenny scored 42 of Belleville's 48 points in a 64-48 loss to a good Bloomfield team. Belleville would get revenge against the Lady Bengals in the Essex County tournament in February, however.

In a game played at Bloomfield High, Belleville broke a tie game wide open in the third quarter by outscoring Bloomfield 16-0. The victory moved the Lady Bucs into the quarterfinals of the ECT, where the girls played eventual champion, Shabazz in Newark.

Prior to the matchup with Shabazz, Belleville played a game at Kearny. It turned out to be an easy win for the Lady Bucs, but in the first quarter, team captain **Barbara Gundry** went down with a badly sprained ankle. Gundry's injury would force her to miss the rest of the season as her foot was placed in a cast.

More importantly, Gundry's absence left a big void in the experience department heading into the game at Shabazz. Fuccello opted to start **Donna Brooks**, then a freshman, at the power forward position and Brooks responded with a good game.

Belleville played well at Shabazz, but the Lady Bulldogs had too much speed and pulled ahead to victory in the second half. It would be the first of three straight years that Belleville and Shabazz would play each other in the county tournament. Each year, the matchup would come deeper in the tournament.

On a personal level, Apicella reached and exceeded the 1,000 point plateau in an afternoon game against Nutley at Belleville High in late February. Apicella reached the magic plateau with two free throws in the third quarter.

It would be the first of many accolades Apicella would receive in her sophomore year and for the remainder of her high school career. Apicella scored 779 points in her sophomore year and entered her junior campaign with 1,236 points. At the end of the '81-82 season, there was already talk of Apicella breaking the state scoring record of 2,745 points.

On a team basis, the Lady Bucs finished with a 17-6 record. The team lost in the state tournament to Irvington at the Dunn Arena in Elizabeth. The 17-6 mark was the finest in team history, to date. The expectations were now building for the '82-83 season.

DeAquino and Wells played very well in '81-82. Also doing a good job that season were **Marlene Talmadge** and **Theresa Critchley**.

We'll continue our look back at the Fuccello era in next week's issue.

LAST WEEKS QUIZ

The Miami Dolphins last made it to the Super Bowl in 1985. There, they lost to the San Francisco 49ers, 38-16. **Dan Marino** was the Miami quarterback. **Don Shula's** Super Bowl record is 2-4. He won with Miami in '73 (over Washington 14-7) and in '74 (over Minnesota, 24-7).

Shula lost with Miami in '72 (against Dallas, 24-3), '83 (against Washington, 27-17) and in '85 against San Francisco.

Shula also lost in Super Bowl III. He was head coach of the Baltimore Colts when they lost to the New York Jets, 16-7.

Grapplers even record

(continued from page 12)

the all time win list. Number eight on the list is Mike Gibbons with 72 wins ... BHS made school history against Clifton when all three Cardinale brothers wrestled on the varsity squad together. Luke went at 112, Isaiah at 119 and Joshua at 125 ... It was the first time three brothers had ever wrestled on the same

team, then it was repeated during the Elmwood Park meet ... John Perna and Isaiah Cardinale remain undefeated, both sporting 11-0 records ... Coach Nisivoccia now has 92 career wins as Belleville's head coach, needing eight more to reach the century mark. With a few breaks, he could reach that landmark on the last dual meet of the season.

Varsity Wrestling

Date	Opponent	Place	Time
Jan. 20	Hackensack	A	5:30 p.m.
Jan. 23	Cliffside Park	H	11 a.m.
Jan. 27	Nutley	H	5 p.m.
Jan. 29	Paramus Catholic	A	7 p.m.
Feb. 3	Teaneck	A	4 p.m.
Feb. 5/6	Essex County Tournament	A	
Feb. 8	Montclair	A	7 p.m.
Feb. 10	St. Joseph	H	5:30 p.m.
Feb. 13	Bloomfield	H	1 p.m.
Feb. 17/18	N.J. State Sectionals		5:30 p.m.
Feb. 20	Bridgewater	A	1 p.m.
Feb. 26/27	District 14		
Mar. 3	Region IV		
Mar. 5/6	Region IV		
Mar. 10	Super Region		
Mar. 12/13	N.J. State Tournament		

Coaches: Joseph Nisivoccia (head coach), Michael Iuliano, Marc Perlavocchio, Carmen Guinta.

Suburban team places third

The Belleville girls' Suburban basketball team placed third at the Nutley Christmas Tournament.

In the first round, Belleville breezed by Maplewood, 65-4. Deana Addis led all scorers with 24 points. She was followed by Chrissy Scassera with 11 points and Jennifer Piscatowski, who came off the bench to tally 11. Jessica Rotino and Addis both had 11 rebounds.

In the second round, Belleville battled a tough Nutley team. It was a physical game, with Nutley winning 38-32.

Coach Sherri Jamison attributed the loss to poor shot selection and ineffective team work. Foul trouble hampered the play of Scassera, Cathy Wengryn and Kim Mahoney. Two quick fouls in the first

quarter took Scassera out of the offense and on to the bench.

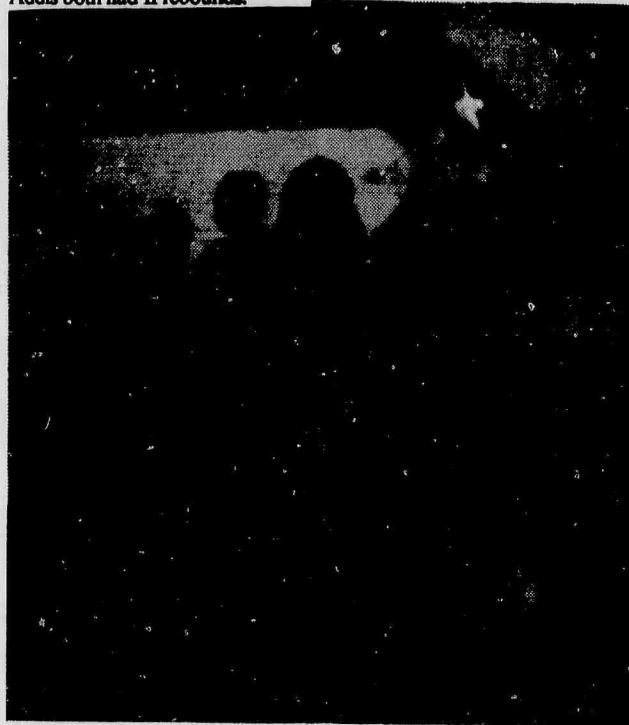
Belleville rallied to win in the consolation game, defeating Rutherford 33-21. Addis and Mahoney each scored 11 points. Piscatowski scored four and Nikki Lopreato and Scassera scored three each.

Assistant coach Nancy Haug

attributed the win to good teamwork and strong defense. Mahoney and Lopreato each pulled down six rebounds.

Addis was named to the all tournament team. She scored 49 points and pulled down 35 rebounds in the three games.

Belleville took a 4-1 record into January conference play.



IS YOUR CHECKING ACCOUNT REALLY FREE?



CHECK THE FINE PRINT!

There are a lot of financial institutions touting free checking. But are they really free? Before you make any decisions, remember to read the fine print.

EXORBITANT BALANCES, LIMITED USE.

While many financial institutions say their checking accounts are free, they require you to maintain exorbitant balances, or limit the amount of checks you can write.

FIRST 200 CHECKS FREE.

At First DeWitt Savings, we believe in providing quality checking products that won't limit your financial freedom. Right now, if you open any First DeWitt Savings checking account and apply for a MAC 24-hour banking card, we will give you your first 200 checks free.

BANKING WITH YOU IN MIND.

At First DeWitt Savings, we believe our customers are our number one asset. That is why our products and services are backed with efficient, quality, personal service.

OUR REGULAR CHECKING ACCOUNT OFFERS:

- ✓ no per check charges
- ✓ your account is totally free of monthly service charges if you maintain an average daily balance of \$500
- ✓ interest is earned on all money if an average daily balance of \$1,000 is maintained
- ✓ current interest rate yield is 2.75%
- ✓ overdraft checking protection*
- ✓ well-organized statements
- ✓ automatic loan payment option
- ✓ no charge for MAC usage**

*If qualified **If used at First DeWitt Savings

ACT TODAY!

Don't let this limited time offer pass you by. For more information, or to open your new account, visit your local branch office today.

FIRST DeWITT SAVINGS

A First State Financial Services Company

1-800-537-0079 • (201) 575-5800

BELLEVILLE • BLOOMFIELD • BRICK • CEDAR GROVE
HOPATCONG • PARSIPPANY • WEST CALDWELL

FDIC insured

Equal Housing Lender
Equal Opportunity Lender

Obituaries

Angelina Galdo, 80

Mrs. Angelina Galdo, 80, of Nutley died Jan. 13 in the Clara Maass Medical Center, Belleville.

A Mass was offered Jan. 15 in St. Mary's Church, Nutley, after the funeral from the Biondi Funeral Home of Nutley.

Mrs. Galdo was a sewer for Technical Fabricators, Nutley, for 10 years before retiring 15 years ago.

She was a member of the American Association of Retired Persons, the Belleville Senior Citizens Wednesday Club, the Rosary Society of St. Mary's Church, Nutley and the Catholic Daughters of America.

St. Mary's Church, Nutley.

Mrs. Galdo was recognized by Essex County for her outstanding work as the Sunshine Lady for the Belleville Senior Citizens Wednesday Club.

Born in Newark, she moved to Nutley 42 years ago.

Surviving are her husband, Nicholas; two daughters, Mrs. Carol DeLuca and Mrs. Suzanne Peters; two sisters, Mrs. Millie Marino and Mrs. Eleanor O'Connell; a brother, Frank Tomasiello; six grandchildren and a great-grandchild.

Thomas R. Eckert

Thomas Russell Eckert, 64, of Belleville died on Thursday, January 14, at the Veterans Administration Medical Center in East Orange.

Born in Wilkes Barre, Pennsylvania, Mr. Eckert resided in Newark before moving to Belleville 45 years ago.

He was employed at Frank's Exxon in Nutley for many years.

until his retirement five years ago.

Mr. Eckert served in the United States Army during the Korean War.

A Funeral Mass was offered on Saturday, January 16 at Our Lady of Mt. Carmel Church following the funeral service from the S. W. Brown and Son Funeral Home in Nutley. Interment was at Immaculate Conception Cemetery in Montclair.

Rita Ciccarella, 73

A Mass for Mrs. Rita Ciccarella, 73, of Belleville was offered Jan. 16 in Holy Family Church, Nutley, after the funeral from the Megaro Memorial Home, Belleville.

Mrs. Ciccarella died Jan. 12 in the Clara Maass Medical Center, Belleville.

Born in Philadelphia, she lived in Newark before moving to Belleville three years ago.

Surviving are her husband, Michael; three sons, Ronald, Michael and Richard; a daughter, Mrs. Marlene Costello; two brothers, Joseph Camp and Victor Compattaro; two sisters, Mrs. Yolanda Bernhardt and Mrs. Viola Rusignuolo, and four grandchildren.

Joseph Allan

Joseph Allan, 74, of Belleville died on Monday, January 11, at Clara Maass Medical Center in Belleville.

Born in Scotland, Mr. Allan lived in Brooklyn, New York, before moving to Belleville 36 years ago.

He was employed by Cooper Industries for 30 years, retiring as Foreman nine years ago.

Surviving are his brother, William, and his sister, Mrs. Agnes Tapper.

A funeral service was held on Thursday, January 14, at the Kiernan Funeral Home in Belleville.

Anthony La Luna

Anthony La Luna, 49, died at his home in Belleville on Sunday, January 17.

Born in Newark, Mr. La Luna was a lifelong resident of Belleville.

He was Computer Operator for the Budweiser Brewery in Newark for 12 years.

Surviving is his brother, Archino

La Luna.

A Funeral Mass was offered at 10 a.m. today at Holy Family Church in Nutley following the funeral service from the S. W. Brown and Son Funeral Home in Nutley. Interment is at Holy Cross Cemetery in North Arlington.

Christ Church dinner party

"Murder at the Prom," a murder/mystery dinner will be presented at Christ Episcopal Church on March 13, beginning at 7 p.m.

This evening of entertainment offers the five D's — Dancing, Dinner, Dessert, Death, and Doo-Wop. The theme for this event is a '50's style prom. Sometime during the dance, someone will be "murdered" and it will be up to everyone else to find the "killer."

The cost for this full evening of entertainment is \$30 per person. You will dance to the music of the '50's, dine at a delicious buffet, meet new people, have a great time, and, who knows, you could even be the "victim." Reservations are required and space is limited, so do not delay. The deadline is Feb. 14.

Attendees will receive a packet of information when their reservations are accepted. This packet will include information on costumes, contests, your character and clues to the evening's "crime." If you need more information about "Murder at the Prom," call the church at 751-0616.

ESSEX COUNTY SHERIFF'S SALE
SUPERIOR (CHAN) D-355
SUPERIOR COURT OF NEW JERSEY, CHANCERY DIVISION, ESSEX COUNTY, DOCKET NO. F-6312-92
FIRST DE WITT SAVINGS AND LOAN ASSOCIATION, PLAINTIFF -vs- EUGENE P. ANTONIO AND MARIE J. ANTONIO, HIS WIFE, ET ALS, DEFENDANTS. Execution For Sale of Mortgaged Premises

By virtue of the above stated writ of Execution, to me directed, I shall expose for sale by Public Auction, in SHERIFF'S OFFICE, Essex County Courts Building in Newark, on Tuesday, the 16th day of February 1993, at one-thirty P.M., (Prevailing Time)

The premises are commonly known as 436 Joralemon St., Belleville, N.J., and are also known as Lot 56, Block 408, on the Tax Assessment Map of the Township of Belleville. The full legal description is set forth in the Office of the Register of Essex County in Mfg. Bk. 5590, Page 987.

The premises are approximately 30 feet wide by 100 feet long and are located on the northerly side of Joralemon Street distant 129.62 feet northerly from the intersection of the northerly side of Joralemon Street with the northerly line of Princeton Terrace. ADEPOSIT OF 10% OF THE BID PRICE IN CASH OR CERTIFIED FUNDS IS REQUIRED AT THE TIME OF SALE.

The approximate amount of the Judgment to be satisfied by said sale is the sum of SEVENTY SIX THOUSAND TWO HUNDRED THIRTY ONE DOLLARS AND TWENTY SIX CENTS (\$76,231.26) together with the costs of this sale.

The Sheriff reserves the right to adjourn the sale from time to time as provided by Law.

Newark, N.J. January 11, 1993

ARMANDO B. FONTOURA, Sheriff

Gaccone, Pomato & Beck, Attorneys

Belleville Times

Jan. 21, 28,

Feb. 4, 11, 1993

Fee: \$84.60

No. B93-12

ESSEX COUNTY SHERIFF'S SALE
SUPERIOR (CHAN) D-363
SUPERIOR COURT OF NEW JERSEY, CHANCERY DIVISION, ESSEX COUNTY, DOCKET NO. F-2715-92
COLUMBIA EQUITIES, LTD., PLAINTIFF -vs- JOSEPH GIORDANO, MARYANN GIORDANO, HIS WIFE, ET ALS, DEFENDANTS. Execution For Sale of Mortgaged Premises

By virtue of the above stated writ of Execution, to me directed, I shall expose for sale by Public Auction, in SHERIFF'S OFFICE, Essex County Courts Building in Newark, on Tuesday, the 16th day of February 1993, at one-thirty P.M., (Prevailing Time)

Property to be sold is located in the Township of Belleville County of Essex and State of New Jersey. Premises commonly known as: 830 Joralemon Street, Belleville, NJ 07109.

Tax Lot No. 17, Block 680 on the Current Tax Map.

Dimensions: (approximately) 100.00 feet wide by 50.00 feet long.

Nearest Cross Street: Beginning at a point in the Northeastly sideline of Joralemon Street, distant thereon 285.52 feet Northwesterly along its various courses and distances 285.52 feet from the intersection of same with the Northwesterly sideline of Rutan Road.

A Full legal description can be found in the Office of the Register of Essex County. ADEPOSIT OF 10% OF THE BID PRICE IN CASH OR CERTIFIED FUNDS IS REQUIRED AT THE TIME OF SALE.

The approximate amount of the Judgment to be satisfied by said sale is the sum of ONE HUNDRED FIFTY SEVEN THOUSAND ONE HUNDRED FORTY EIGHT DOLLARS AND TWELVE CENTS (\$157,148.12) together with the costs of this sale.

The Sheriff reserves the right to adjourn the sale from time to time as provided by Law.

Newark, N.J. January 11, 1993

ARMANDO B. FONTOURA, Sheriff

Federman and Phelan, Attorneys

Belleville Times

Jan. 21, 28,

Feb. 4, 11, 1993

Fee: \$95.80

No. B93-14

NOTICE TO ABSENT DEFENDANTS (L.S.) STATE OF NEW JERSEY TO DELUXE HOME REMODELING CO., INC.

YOU ARE HEREBY SUMMONED AND REQUIRED to serve upon FEDERMAN AND PHELAN, P.C., plaintiff's attorney whose address is Suite 505, Sentry Office Plaza, 216 Haddon Avenue, Westmont, New Jersey 08108, an answer to the Complaint filed in a civil action, in which Norstar Mortgage Company, a Division of Fleet Real Estate Funding Corp., is plaintiff and Pearlina Head, et als, are defendants pending in the Superior Court of New Jersey, Chancery Division, Essex County and bearing Docket No. F-15275-92, within thirty-five (35) days after January 21, 1993 exclusive of such date. If you fail to do so, judgment by default may be rendered against you for the relief demanded in the Complaint. You shall file your answer and proof of service in duplicate with the Clerk of the Superior Court of New Jersey, Hughes Justice Complex, CN-971, 24 Market Street, Trenton, New Jersey 08625, in accordance with the rules of civil practice and procedure.

This action has been instituted for the purpose of (1) foreclosing a mortgage dated February 1, 1991 made by Pearlina Head, as mortgagor given to Norstar Mortgage Company, a Division of Fleet Real Estate Funding Corp., the plaintiff herein, and recorded on February 13, 1991 in Book 5911 of Mortgages of Essex County, at page 129, and; (2) to recover possession of, and concerns premises commonly known as 367 Isabella Avenue, Irvington, New Jersey 07111.

If you are unable to obtain an attorney you may communicate with the New Jersey State Bar Association by calling 800-852-0127.

You may also contact the Lawyer Referral Service of the County of venue by calling (201) 533-1779. If you cannot afford an attorney, you may communicate with the Legal Services office of the county of venue by calling (201) 672-6050.

YOU, Deluxe Home Remodeling Co., Inc., are named as a party defendant herein for any lien, claim or interest you may have in, to, on the mortgaged premises by virtue of the following mortgage: Mortgage made by Pearlina Head and given to Deluxe Home Remodeling Co., Inc., dated February 25, 1992 and recorded on June 4, 1992 in Book 6069 of Mortgages, said county, at Page 741, to secure the sum of \$6,600.00.

DONALD F. PHELAN,

Acting Clerk

Superior Court of New Jersey

Belleville Times

Jan. 21, 1993

Fee: \$29.61

No. B93-29

ESSEX COUNTY SHERIFF'S SALE
SUPERIOR (CHAN) D-357
SUPERIOR COURT OF NEW JERSEY, CHANCERY DIVISION, ESSEX COUNTY, DOCKET NO. F-17716-91
SHERICORP, A NEW JERSEY CORPORATION, PLAINTIFF -vs- HENRY O. WASHINGTON, ET ALS, DEFENDANT. Execution For Sale of Mortgaged Premises

By virtue of the above stated writ of Execution, to me directed, I shall expose for sale by Public Auction, in SHERIFF'S OFFICE, Essex County Courts Building in Newark, on Tuesday, the 16th day of February 1993, at one-thirty P.M., (Prevailing Time)

The property to be sold is located in the City of Newark in the County of Essex, New Jersey.

Commonly known as: 10-12 Millington Avenue, Newark, New Jersey

Tax Lot No. 39 in Block 3031.

Dimensions of Lot: (Approximately) 34 feet wide by 105 feet long.

Nearest Cross Street: Situate at the intersection of the Southerly side of Millington Avenue with the Easterly side of Ingraham Place.

Subject to a first mortgage held by Citicorp Mortgage, Inc., in the original sum of \$157,500.00.

A Full legal description can be found in the Office of the Register of Essex County. ADEPOSIT OF 10% OF THE BID PRICE IN CASH OR CERTIFIED FUNDS IS REQUIRED AT THE TIME OF SALE.

The approximate amount of the Judgment to be satisfied by said sale is the sum of TWENTY FOUR THOUSAND EIGHT HUNDRED FOUR DOLLARS AND SEVENTY FIVE CENTS (\$24,804.75) together with the costs of this sale.

The Sheriff reserves the right to adjourn the sale from time to time as provided by Law.

Newark, N.J. January 11, 1993

ARMANDO B. FONTOURA, Sheriff

Zucker, Goldberg, Becker

& Ackerman, Attorneys

phone number, 1-201-763-7788

file number, XCS-26576

Belleville Times

Jan. 21, 28,

Feb. 4, 11, 1993

Fee: \$97.76

No. B93-13

ESSEX COUNTY SHERIFF'S SALE
SUPERIOR (CHAN) D-327
SUPERIOR COURT OF NEW JERSEY, CHANCERY DIVISION, ESSEX COUNTY, DOCKET NO. F-12349-91
FEDERAL NATIONAL MORTGAGE ASSOCIATION, PLAINTIFF -vs- JOHN ELVIN & MRS. JOHN ELVIN, HW, ET ALS, DEFENDANTS. Execution For Sale of Mortgaged Premises

By virtue of the above stated writ of Execution, to me directed, I shall expose for sale by Public Auction, in SHERIFF'S OFFICE, Essex County Courts Building in Newark, on Tuesday, the 2nd day of February 1993, at one-thirty P.M., (Prevailing Time)

Being all that certain real property, subject to the provision of the State of New Jersey Condominium Act, N.J.S.A. 46:8B-1 et seq., its amendments and supplements and situate, lying and being in the City of Newark, County of Essex, State of New Jersey, more particularly described as Unit No. 2A in Building No. 592-594 in BRANCH BROOK CONDOMINIUM, a New Jersey

Condominium, together with an aggregate 3.4495 percent undivided interest in the Common Elements of said Condominium appurtenant to the aforesaid Unit, in accordance with and subject to the terms, limitations, conditions, covenants, restrictions, easements, agreements and other provisions set forth in the Master Deed for BRANCH BROOK CONDOMINIUM, a condominium, dated January 4, 1982 and recorded September 9, 1982 in the Office of the Essex County Register in Deed Book 4761 page 424, et seq., as the same may now or hereafter be lawfully amended and subject to the provisions of the By-Laws on the Branch Brook Condominium Association, Inc., and any amendments thereto.

ALSO BEING KNOWN AS LOT 9C UNIT A2A BLOCK 596 ON THE TAX MAP OF THE CITY OF NEWARK, COUNTY OF ESSEX, STATE OF NEW JERSEY.

Commonly Known as 592 North 6th Street, Newark, N.J.

ADEPOSIT OF 10% OF THE BID PRICE IN CASH OR CERTIFIED FUNDS IS REQUIRED AT THE TIME OF SALE.

The approximate amount of the Judgment to be satisfied by said sale is the sum of THIRTY-NINE THOUSAND ONE HUNDRED NINETY-THREE DOLLARS AND ELEVEN CENTS (\$39,193.11) together with the costs of this sale.

The Sheriff reserves the right to adjourn the sale from time to time as provided by Law.

Newark, N.J. December 28, 1992

ARMANDO B. FONTOURA, Sheriff

Shapiro & Kreisman, Attorneys

Belleville Times

Jan. 7, 14, 21, 28, 1993

Fee: \$116.56

No. B92-581

ESSEX COUNTY SHERIFF'S SALE
SUPERIOR (CHAN) D-345
SUPERIOR COURT OF NEW JERSEY, CHANCERY DIVISION, ESSEX COUNTY, DOCKET NO. F-1482-92
MIDLANTIC HOME MORTGAGE CORPORATION, PLAINTIFF -vs- JUAN MORENO, UNMARRIED, ET ALS, DEFENDANT. Execution For Sale of Mortgaged Premises

By virtue of the above stated writ of Execution, to me directed, I shall expose for sale by Public Auction, in SHERIFF'S OFFICE, Essex County Courts Building in Newark, on Tuesday, the 9th day of February 1993, at one-thirty P.M., (Prevailing Time)

The property to be sold is located in the City of Newark in the County of Essex and State of New Jersey.

Tax Lot No. 14 in Block 576

Dimensions of Lot: (Approximately) 25' x 105'

Nearest Cross Street: Nursery Street

Premises Commonly known as: 40 Wakefield Avenue, Newark, N.J. 07104.

A Full legal description can be found in the Office of the Register of Essex County.

ADEPOSIT OF 10% OF THE BID PRICE IN CASH OR CERTIFIED FUNDS IS REQUIRED AT THE TIME OF SALE.

The approximate amount of the Judgment to be satisfied by said sale is the sum of ONE HUNDRED NINETY-SIX THOUSAND SIX HUNDRED FOURTEEN DOLLARS AND SIXTEEN CENTS (\$196,614.16) together with the costs of this sale.

The Sheriff reserves the right to adjourn the sale from time to time as provided by Law.

Newark, N.J. January 4, 1993

ARMANDO B. FONTOURA, Sheriff

Hubschman & Roman, Attorneys

Belleville Times

Jan. 14, 21, 28,

Feb. 4, 1993

Fee: \$77.08

No. B93-4

Pharmacy Footnotes

Vincent Cozzarelli Reg. Ph.

NONSEDATING ANTIHISTAMINE UPDATE

Relatively new non-sedating prescription-only antihistamines have become quite popular among allergy sufferers because they do not cause drowsiness. However, a dangerous drug interaction has recently come to light that users of terfenadine (the generic name) should note. When taken along with the antibiotics erythromycin or troleandomycin, the amount of terfenadine can increase in the blood. This is due to the fact that the antibiotics interfere with the liver's ability to break down terfenadine for elimination. As a result of the raised levels of the antihistamine, life-threatening abnormal heart rhythms may result. Those who experience fainting, dizziness or palpitations while taking terfenadine are advised to call their physicians.

If you have any questions concerning medications, including interactions, call our pharmacist at 759-1956 or 759-1968. ROSS-MORE PHARMACY, 338 Washington Avenue. We have a complete prescription department including free delivery. Baby needs, cosmetics, toiletries, Russell Stover candies and gifts are available. Hours: Daily 9am-10pm, Sundays 9am-9pm.

HINT: Taking more than the recommended daily dose (10mg.) of astemizole (another non-sedating antihistamine) may also lead to heart-function abnormalities.

Irvine Cozzarelli Memorial Home

IN YOUR TIME OF NEED

"A Family Name You Can Trust"

James J. Cozzarelli, Jr. Owner/Manager

276 Washington Ave. Belleville 759-1114



PROFESSIONALLY SPEAKING

The Nutley Sun
Belleville Times
Bloomfield Life



Gerard Cicalese, M.D., P.A.
Joseph Parlavecchio, M.D.

Announce The Opening
Of Their Second Office

Located at:

382 W. Passaic Ave., Bloomfield, NJ

Evening Hours By Appointment Only

330 Washington Ave., Belleville • 751-4300

FOR YOUR FINANCIAL AND TAX NEEDS
Paul Goldman, C.P.A.

- Personal Income Taxes Including New York Wage Earners
- Self-employed Individuals
- Corporate Taxes - New Businesses
- Tax Planning
- Estate Accounting

180 WASHINGTON AVE.
BELLEVILLE • 759-7791

"ABOVE FLOWERSAMA"

DR. RALPH J. DI MAIO
CHIROPRACTOR

Serving your community
for over 13 years

Most insurances provide coverage

751-8805

625 Joralemon St. Belleville

Dial "NO-PAINO"
(667-2466)

Cosmetic &
Restorative
Dentistry

Smile Today

J.D. Muglia D.D.S., P.A. F.A.C.D.

10 Franklin Ave.
Nutley, N.J.

24 Hr. Emergency
Service

NUTLEY - KEARNY OBSTETRICS - GYNECOLOGY
HOWARD GRODER, M.D.
JEFFREY ROSEN, M.D.
HIGH RISK PREGNANCY INFERTILITY

Nutley Medical Plaza
181 Franklin Avenue
Nutley, N.J. 07110
667-2212

Arlington Medical Building
837 Kearny Avenue
Kearny, N.J. 07032
991-1519

"Serving The Community For 40 Years"

TO ADVERTISE YOUR BUSINESS HERE CALL 667-2700

THERE'S NO PLACE LIKE HOME

180 Centre St.
Nutley, N.J. 07110
667-3440

GEORGE E. MACMUNN CO.
REALTORS

100 Woodport Road
Sparta, N.J. 07871
729-8727



OPEN HOUSE - SUNDAY-1-4PM NUTLEY,
158 COEYMAN AVE. (Off Bloomfield Ave.)
Spring Garden School area, charm abounds in this immaculate, tastefully decorated 3 BR, 1 1/2 mod bath home. Beaut. Frpl. wall, natural trim with built-in bookcases, mod eat-in kit, formal DR, Large Fam. Rm, fenced rear yard, 1 car gar. **ASKING \$204,900.**



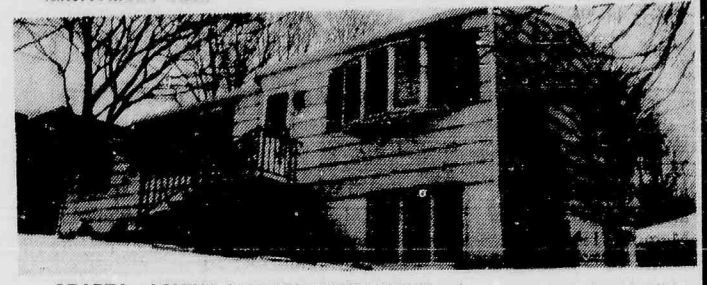
NEW LISTING - NUTLEY
Super Split, 22x14 LR, new Cherry kit, lg. Master BR w/private bath + 2 additional BR's and second tile bath. 17x17 Fam. Rm. w/powder rm., C/A, new roof, 2 car gar & many other amenities. **ASKING \$219,900.**

**DO YOU KNOW
WHAT YOUR
HOUSE IS
WORTH
TODAY?**

We offer a current market
value analysis...
Just pick up the phone & call.



ASKING 152,500
Just one block from SPARTA in Byram, 12 yr. old, 3 BR's 1 1/2 baths, huge Fam. Rm. w/woodstove, 119x115 level lot, 3 zone HW heat. Walk to private lake. **A MUST SEE!**



SPARTA - ASKING \$132,500. JUST LISTED
Fam. neighborhood on quiet street, Immac 3 BR Ranch. Mod kit & bath, frpl, fam. rm, 185x100 lot. Lots of nice upgrades & taxes only \$2,898. **Terrific condition!**

WANTED

**YOUR INSPECTION / YOUR OFFER
THE REWARD WILL BE YOURS**

In this 7 room Radcliffe Colonial with 2 1/2 baths, fireplace in living room, country kitchen, 1st floor family room & rear porch.

YANTACAW SPECIAL

6 1/2 rooms in move-in-condition awaits your inspection & offer.
on asking price of \$174,500.

DO YOU KNOW THE MARKET VALUE OF YOUR HOME?
CALL US FOR OUR OPINION WITHOUT COST OR
OBLIGATION TO LIST OR SELL.

EVERYONE KNOWS

GEORGE T. BOWES

YOUR NUTLEY REALTOR SINCE 1933
681 FRANKLIN AVE. NUTLEY 667-3376

Seven Basic Carpet Types Offer Buyers A Choice

There are seven basic types of carpet construction: velvets, saxonomies or plushes, friezes, level loop, multi-level loop, tip sheared and cut/loop or traceries.

Velvets are the ultimate in elegance. All the pile fibers blend together in these extra dense, cut pile carpets to give you an ultra-smooth sweep of rich luxurious color.

Saxonomies or plushes offer versatile beauty in cut pile but are not as formal as velvets. The degree to which individual tufts are visible in the pile creates a wide range of subtly different appeals. This style shows footprints and shading as part of its styling effect.

Friezes (pronounced freeze ays) are the most casual and rugged of cut pile carpets. Tightly twisted heat-set yarns curl back on themselves creating a distinctive nubby or pebbled texture look. They tend to wear very well and hide footprints and dust.

Level loop is carpet made with tufted loops of the same height. It has a tight pebbly surface to take hard wear and hides footprints and furniture marks. Soil tends to stay on the surface for easy cleaning. The visibility of

each loop and the way it reflects light from the surface makes level loop carpets most suitable for commercial applications.

Multi-level loop has variances in the height of the loops which create a wide range of styles in a sculptured or patterned surface. The carpet design can offer additional practicality in maintenance over a level loop texture due to the patterned effect.

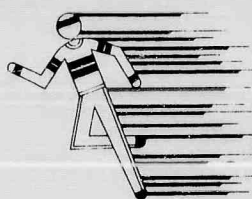
Tip sheared carpets tend to be the most luxurious of the loop styles. Using loops of different height, a rich pattern is created by shearing the tips of the higher loops while maintaining the benefits of other loops.

Cut/loop combines the effect of a saxony carpet with a tracery loop patterned effect which is why these carpets are sometimes referred to as "Traceries". This unique combination of cut pile and loop pile creates a carved, sculptured effect.

For your free copy of the Consumer's Guide to Carpet call 1-800-845-4252.

**STATE - OF - THE - ART
COMPUTERIZED
Creative Services**
Everything
for
your
advertising
needs

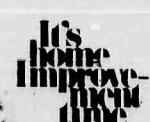
**FLYERS
BROCHURES
BOOKLETS
RESUMES
BUSINESS CARDS
STATIONARY
BUSINESS LOGOS
AD DESIGN
MENUS
CAMPAIGN LITERATURE**



**FAX
SERVICE**

WE ALSO LAMINATE

**Atlantic Coast
creative service
667-0077**



The Mini Page

Especially for kids and their families

© 1993 by Universal Press Syndicate

By BETTY DEBNAM

Top Advisers with Big Jobs

The President's Cabinet



Do you have some friends whom you turn to when you want some advice? The president of the United States does. He has a Cabinet.

The Cabinet

This Cabinet is not like the one you keep things in.

The word "cabinet" comes from an old English word meaning private meeting room.

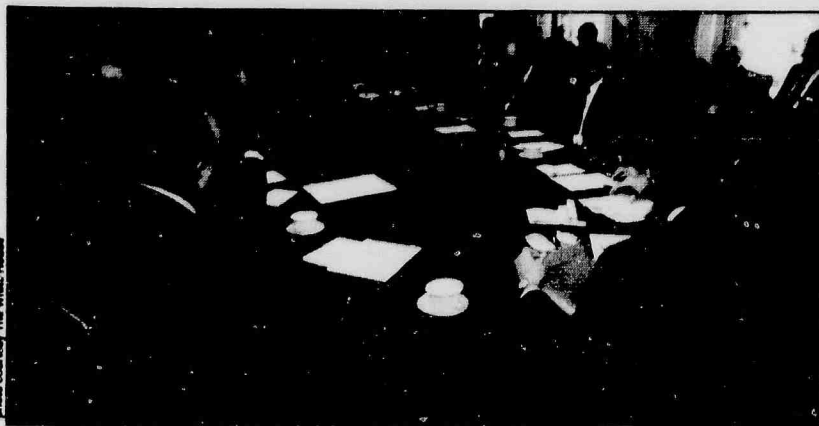
In this case, it means a special group to help the president run the country. They give him advice and ideas and reports.

The secretaries

Most of the members of the Cabinet have the title of "secretary," but they probably can't type.

Secretary is a special title that is given to people who are in charge of big government departments.

They are nominated by the president but must be approved by the Senate.



A Cabinet meeting when George Bush was in office. The Cabinet meets in a room near the president's Oval Office in the White House. The members sit around a long table. The president sits in the middle at the widest part. The vice president and certain staff members with top jobs are also invited to attend.

Meetings

It is up to each president to decide when to call a Cabinet meeting. Some presidents hold more meetings than others.

Cabinet members don't always meet as a group. Sometimes presidents meet only with those who are concerned with special problems.

History

The Cabinet is not set up by the Constitution.

But every president since Washington has had one.

There were only four members of Washington's Cabinet. The custom began when he met with them so often.



Each chair has a panel with the name of the member and his or her department.



The chairs

Each Cabinet member sits in his or her own special chair at the meetings. Their chairs are always arranged in a certain order.

When members leave office, the people on their department staffs often buy the chairs and present them to the members as souvenirs.

PETER PENGUIN'S PUZZLE & LE-DO

Fit the names of these things you might find on a Cabinet secretary's desk into the puzzle.

ACROSS:

2. _____

4. _____

5. _____

DOWN:

1. _____

3. _____

5. _____

ANSWERS:

1. telephone

2. lamp

3. pen

4. pencil

5. paper

6. calendar

7. stapler

8. typewriter

9. clock

10. coffee pot

11. desk

12. chair

13. book

14. folder

15. calculator

16. ruler

17. eraser

18. stapler

19. typewriter

20. clock

21. coffee pot

22. desk

23. chair

24. book

25. folder

26. calculator

27. ruler

28. eraser

29. stapler

30. typewriter

31. clock

32. coffee pot

33. desk

34. chair

35. book

36. folder

37. calculator

38. ruler

39. eraser

40. stapler

41. typewriter

42. clock

43. coffee pot

44. desk

45. chair

46. book

47. folder

48. calculator

49. ruler

50. eraser

51. stapler

52. typewriter

53. clock

54. coffee pot

55. desk

56. chair

57. book

58. folder

59. calculator

60. ruler

61. eraser

62. stapler

63. typewriter

64. clock

65. coffee pot

66. desk

67. chair

68. book

69. folder

70. calculator

71. ruler

72. eraser

73. stapler

74. typewriter

75. clock

76. coffee pot

77. desk

78. chair

79. book

80. folder

81. calculator

82. ruler

83. eraser

84. stapler

85. typewriter

86. clock

87. coffee pot

88. desk

89. chair

90. book

91. folder

92. calculator

93. ruler

94. eraser

95. stapler

96. typewriter

97. clock

98. coffee pot

99. desk

100. chair

101. book

102. folder

103. calculator

104. ruler

105. eraser

106. stapler

107. typewriter

108. clock

109. coffee pot

110. desk

111. chair

112. book

113. folder

114. calculator

115. ruler

116. eraser

117. stapler

118. typewriter

119. clock

120. coffee pot

121. desk

122. chair

123. book

124. folder

125. calculator

126. ruler

127. eraser

128. stapler

129. typewriter

130. clock

131. coffee pot

132. desk

133. chair

134. book

135. folder

136. calculator

137. ruler

138. eraser

139. stapler

140. typewriter

141. clock

142. coffee pot

143. desk

144. chair

145. book

146. folder

147. calculator

148. ruler

149. eraser

150. stapler

151. typewriter

152. clock

153. coffee pot

154. desk

155. chair

156. book

157. folder

158. calculator

159. ruler

160. eraser

161. stapler

162. typewriter

163. clock

164. coffee pot

165. desk

166. chair

167. book

168. folder

169. calculator

170. ruler

171. eraser

172. stapler

173. typewriter

174. clock

175. coffee pot

176. desk

177. chair

178. book

179. folder

180. calculator

181. ruler

182. eraser

183. stapler

184. typewriter

185. clock

186. coffee pot

187. desk

188. chair

189. book

190. folder

191. calculator

192. ruler

193. eraser

194. stapler

195. typewriter

196. clock

197. coffee pot

198. desk

199. chair

200. book

201. folder

202. calculator

203. ruler

204. eraser

205. stapler

206. typewriter

207. clock

208. coffee pot

209. desk

210. chair

211. book

212. folder

213. calculator

214. ruler

215. eraser

216. stapler

217. typewriter

218. clock

219. coffee pot

220. desk

221. chair

222. book

223. folder

224. calculator

225. ruler

226. eraser

227. stapler

228. typewriter

229. clock

230. coffee pot

231. desk

232. chair

233. book

234. folder

235. calculator

236. ruler

237. eraser

238. stapler

Welcome President Clinton

FRED & SON PRODUCE MARKET

184 Franklin St.
Belleville

751- 3577

MARIA'S DRESS & TAILOR SHOP

331 Union Ave.
Belleville

751- 5336

KONDREK STUDIOS

577 Washington Ave.
Belleville

759- 2050

HAPPY APPLE SCHOOL

166 Franklin St.
Belleville

751-0633

NANINA'S IN THE PARK

540 Mill St.
Belleville

751- 1230

GOLD MINE TRADING

*Need Cash? We Buy Gold.
Used or New*

726 Washington Ave.
Belleville

751-1221

ROYAL FLUSH SEWER & DRAIN CLEAN

192 Linden Ave.
Belleville

450-0800

NANNY D'S INFANT DAY CARE

204 Washington Ave.
Belleville

759-1524

ACCESS FLOORING SUPPLIES INC.

52 E. Centre St.
Nutley

667-0838

LITTLE'S PHARMACY

547 Franklin Ave.
Nutley

667-0822

JOSEPHS' PHOTOGRAPHERS ON THE PARK

194 Chestnut St.
Nutley

667-2440

EAST NUTLEY GARAGE & BODY SHOP

38 Washington Ave.
Nutley

667-0608

BECK'S TV SERVICE CO.

182 Chestnut St.
Nutley

**667-0068
667-2275**

CENTURY HEATING & COOLING, INC.

P.O. Box 556
Nutley

667-6422

LOUIS ELECTRONICS

669 Bloomfield Ave.
Nutley

667-6679

KITCHENS BY TURANO

188 Washington Ave.
Nutley

235-0011

NUTLEY CAMERA

215 Franklin Ave.
Nutley

667-4166

GARY'S PHARMACY

349 Franklin Ave.
Nutley

667-1003

WINDHEIM PLUMBING

418 Franklin
Nutley

667-6886

RECORDS REALTY

3 High St.
Nutley

667-5500

J & R TOWN GETTY

661 Bloomfield Ave.
Nutley

661-4848

MIDTOWN SPORTING GOODS

309 Franklin Ave.
Nutley

Al Restaino
667-7080

DANA AUTOMOTIVE

217 Darling Ave.
Nutley

667-1234

CHARLES JEWELERS

163 Washington Ave.
Belleville

759-2468

SANDY LANE NURSERY SCHOOL

634 Mill St.
Belleville

751-6380

JND AUOMOTIVE INC.

19 Beech St.
Bloomfield

748-8773

BELLEVILLE PUBLIC LIBRARY

221 Washington Ave.
Belleville

450-3434

SILVER LAKE AUTO SERVICE

22 Broad St.
Belleville

759-3847

BELLA CASA CATERERS

2 Acme St.
Belleville

450-0602

PASTELS UNISEX HAIR SALON

529 Joralemon St.
Belleville

450-1444

B & C SERVICE CENTER

19 Franklin St.
Bloomfield

748-9566

BOB KAHN PHOTOGRAPHY

162 Chestnut St.
Nutley

284-0279

GEORGE T. BOWES

681 Franklin Ave.
Nutley

667-3376

GARFALO'S VARIETY

323 Union Ave.
Belleville

751-0595

MICHAEL W. FRIEDA & ANTHONY T. SURIANO, D.M.D.

307 Broad St.
Bloomfield

743-2248

WISE OWL NURSERY SCHOOL

617 Washington Ave.
Belleville

759-1211

JOSEPH P. ALBANESE, ATTORNEY

530 Franklin Ave.
Nutley

661-2171

JANETTE NUTLEY CENTER

Nutley Center
Nutley

667-1900

ANTHONY S. AMOSCATO, ATTORNEY

345 Centre St.
Nutley

667-3777

GIORDANO REALTY

Investments & Residentials

727 Joralemon St.
Belleville

450-8500

ZIPPO'S CAR STEREO

745 Washington Ave.
Belleville

759-6752

ALGIERI'S PIZZA

*Ask For Joe or Dom
\$3.95 Mon & Tues*

500 Union Ave.
Belleville

751-3577

LAW OFFICES OF GACCIONEI, POMACO & BECK

524 Union Ave.
Belleville

759-2807

VINNIE'S PIZZERIA

227 Centre St.
Nutley

667-1551

PRO LUMBER & HARDWARE CO.

585 Washington Ave.
Belleville

759-8900

A & S ITALIAN PORK STORE OF NUTLEY, INC.

393 Franklin Ave.
Nutley

661-4889

WASHINGTON MOTEL INC.

570 Washington Ave.
Belleville

759-9898

SECRETARIAL SERVICES PLUS

THE RESUME PLACE

228 Franklin Ave.
Suite #4
Nutley

667-0339

JE-DOMS FOR HAIR

1277 Broad St.
Bloomfield

338-8793

BRANCH BROOK MANOR

13 Washington Ave.
Belleville

Parties For All Occasions

759-9744

CENTURY 21 WAYNE K. THOMAS

277 Broad St.
Bloomfield

429-7400

KILEY REAL ESTATE

185 Liberty St.
Bloomfield

748-5050

COHEN & COHEN, PA

25 Pompton Ave.
Verona

239-5900

CHARLES AURIEMMA OF AURIEMMA ELECTRIC

751-5926



THE CLASSIFIEDS

HOURS:
Mon.-Fri. 9am-5pm

Call:
667-3000

All Classified Ads appear automatically in all three of our papers: The Nutley Sun, Belleville Times, Bloomfield Life.

Transient Ads — Paid In Advance

First 4 lines \$16.91
Each Additional Line \$1.52
Borders Are Available
For a Fee of \$10.00
Contract Rates Available



Are Accepted

Call Today
667-3000

Check your Ad the first day of publication

CREDITS:

Credits & adjustments are to be made only for errors which significantly alter the effectiveness of the ad, such as a wrong telephone number or price. Credits will not be issued for typographical errors or misspelled words. The newspapers can assume responsibility only for MAJOR errors in the first day's publication.

Classified Deadline Tuesday 12 Noon

Name			
Address			
Phone			
Category			
<input type="checkbox"/> Border \$10.00 Additional			
Run Date	Number of Insertions		
<input type="checkbox"/> Check	Visa M/C No.		

GENERAL OPPORS.

Office person to answer phone & use wordprocessor. Must have good telephone voice. Pleasant working cond. Good pay. Apply in person at 145 Manchester Ave, Newark, NJ

READ BOOKS FOR PAY! Earn Good Money Doing Something You Enjoy! \$100.00 a Title! Recorded Message Gives Full Details. CALL 1-800-330-5518

SECRETARY P/T

Clara Maass Medical Center is seeking an experienced secretary for our busy Nursing Service Office. 8 am - 4 pm, four days a week. Typing 40-60 wpm and shorthand skills. Lotus and Multimate computer knowledge a plus

Please send resume to: Maureen Freundlich:

CLARA MAASS MEDICAL CENTER
One Franklin Avenue
Belleville, NJ 07109
E/O/E

WE'LL PAY YOU to type names and addresses from home. \$500.00 per 1000. Call 1-900-896-1666 (\$1.49 min/18hrs.+) or Write: PASSE - F6737, 161 S. Lincolnway, N. Aurora, IL 60542

MEDICAL

Lg. Blmld Ophthalmology Practice seeks F/T (2 Eves) Optometric Assist. To manage contact lens Dept. & provide assistance to Ophthalmologist. Good Communication, & Org. skills req. Exp. or will train. Call 743-1331

OFFICE HELP NEEDED for busy Chiropractor Call 678-6370

PART-TIME HELP

PART-TIME SECRETARY Mon.-Fri., 9 a.m. to noon. Typing, computer, organizational skills essential. Experience a plus. Must be able to handle person-to-person contacts on phone and in person and manage office and church calendar. Resumes by Feb. 1 to St. Paul's Congregational Church, 10 St. Paul's Place, Nutley, N.J. 07110. Att: Keith Banks

Waitress Day or Even. Shift. Exp. Only. Apply in person. The Stack 205 River Rd., No. Arlington

RECEPTIONIST

Busy Gen. Dental Prac Pleasant Working Cond. Exp. Preferred. Call 759-0552

BUSINESS OPPORS.

!!TAVERN!! Belleville (Silver Lake) Well estab. business. Long term lease w/low rental. Owner financing. Asking \$85,000 w/option to buy property & business. \$165,000. Hurry - Won't Last!! D. Paul Lettini R.E. Broker 450-8121 Eves. 450-0958

DRIVER WANTED F/T Call Andros Farms 751-4277

FULL-TIME/PART-TIME \$11.00 TO START

Due to expansion local Verona office of international company has 10 to 15 positions needed to be filled immediately. Flexible hours; great second income; advancement. Positive, hard working only need apply. 201-239-3382

GAS ATTENDANT NEEDED.

F/T, P/T days. For busy station. Call between 8 & 6 P.M. 235-9832

HOSPITAL JOBS

Start \$7.30 hr your area. No Exp. Nec. Must be 18. For info Call (1900) 820-8633 Ext. 2607 6am to 8pm 7 Days. \$12.95 Ph. Fee

Mature responsible individual wanted for retail sales position. 3 or 4 days a week. 9am to 5:30pm. Call Dan Miller 667-4466

RECEPTIONIST - F/T start immid, resp mature, reliable, indiv. 2 pm - 10 pm 751-6999

BUSINESS OPPORS.

Beauty Salon for Sale Established 15 years 4 stations, Facial Booth plus Nail! Must See! Call Barbara 998-2799

\$1.00 Fax USA* Incredible new business. Fax anywhere USA just \$1.00. Minimum \$18K Required. Exclusive areas now being awarded. Potential \$50K + 1st year. Call 800-477-8905.

Own and operate a route of America's leading snack machines. Complete 32 machine routes established for you. \$9980.00 Investment required. 1-800-344-2351

Soda - snack vending route. Recession proof business. Hot new \$ maker. Eliminate the middleman buy factory direct. 1-800-653-VEND.

TAVERN Building & Business. Parking Motivated Seller. Exc. Growth Potential Terms, \$250,000 Gem Realtors 228-2222

TAX

INCOME TAX Walter A Sluberski, CPA *Personel or Business *10 years Experience *Reasonable Rates *Evening/W/E appts. at your home or office (201) 893-1291

INSTRUCTION

AIRLINES NEED TRAINED MACIANICS NOW Housing-Financial Aid. 50 Week Program. Job Placement. High School-Diploma - G.E.D. 1-800-537-1183 RIVERSIDE SCHOOL OF AERONAUTICS UTICA, NY

INSTRUCTION

BECOME A PARALEGAL. JOIN AMERICA'S FASTEST GROWING PROFESSION. LAWYER INSTRUCTED HOME STUDY. THE FINEST PARALEGAL PROGRAM AVAILABLE. P.C.D.I., ATLANTA, GEORGIA. FREE CATALOG. 800-362-7070 SEPT. LA21202

ARTICLES FOR SALE

Clothing Store Fixtures for sale Call for details 667-9557

PING PONG TABLE BRAND NEW, ACCES. INCL. \$100. Call Karen 759-9256

Table w/4 Chairs, Sofa& Lvt. Bedroom Set. All Contemporary & 1 Yr Old Leslie 460-3765 M-F 9-5

WANTED

Used Air Conditioners CASH!! 482-3681

WOLFF TANNING BEDS New Commercial-Home Units From \$199.00. Lamps - Lotions - Accessories. Monthly Payments Low As \$18.00. Call Today FREE NEW Color Catalog 1-800-228-6292

ARTICLES WANTED

I'M BUYING TOOLS *Old *New *Used *Any Type *Any Quantity CALL "GENE" 696-4908 4-6 PM weekdays. After 6:30 PM weekends.

ARTICLES WANTED

Licensed Gun Collector Cash for: *Guns *Swords *Daggers *Bayonets *Military Items Registered Appraiser CALL 783-6145

LIONEL AND OTHER TRAINS

COLLECTOR PAYS TOP PRICE CALL 201-334-8709 or 201-635-2058

FURNITURE

*Used Filing Cabinets *Chairs *Desks EDELSTEIN OFFICE FURNITURE WISE. 946 Market St. Paterson Cor.Lakeview Ave.& R180 523-6153

Complete BR set. Solid fruitwood, solid brass hardware, queen size headboard, triple dresser w/2 mirrors, chest of drawers, 2 night tables, 2 new lamps. Excel cond. Asking \$750 or B/O. Call 751-1290 aft 3:30 p.m.

FOR SALE

Blonde formica corner hutch. Drawers & shelves. Glass doors. Great for extra storage. Good condition. Reasonable! Call 483-7623 after 12 noon

FOR SALE!!

2 wood trimmed, high back fireside chairs. Melon velvet. Excellent Condition! \$150. takes the pair, but willing to separate. Call Michelle at 748-8729 aft. 6pm

Kitchen Table Black Metal, Black Formica Top w/leaf. 4 Chairs. \$75.00 759 3819

FURNITURE

MOVING SALE-complete living room, antique desk, antique chair, 2 A/C heater, pots & pans, paintings, glasses & dishes. 667-6074

Natural wood crib. Like new, w/matching change table & armoire. Best Offer! 284-1424 aft. 8pm

MUSICAL INSTRUMENTS

Musical Instruments FOR LESS !!! School Band, Drums, Guitars, Amps, and Accessories Galore! Call 667-5574 6-8pm M-F 10-5 Sat

PETS & SUPPLIES

HAPPY JACK MANGE MEDICINE promotes healing & hair growth to hot spots and mange on dogs & horses without steroids. At farm & feed stores

CONDOS FOR SALE

BELLEVILLE NICE STARTER CONDO Ideal for single or couple! Move in condition. Price to sell. Low taxes. (172-2593) \$59,000. Call 779-1900

Weichert Realtors
The American Dream Team

HOUSING



EQUAL HOUSING OPPORTUNITY

All real estate advertised herein is subject to the Federal Fair Housing Act of 1968 which makes it illegal to advertise "any preference, limitation, or discrimination based on race, color, religion, sex, national origin, familial status, or handicap, or intention to make any such preferences, limitation, or discrimination"

We will not knowingly accept any advertising for real estate which is in violation of the law. All persons are hereby informed that all dwellings advertised are available on an equal opportunity basis.

To complain about discrimination in housing call HUD's national toll free number: 1-800-424-8590

HOUSES FOR SALE

BELLEVILLE 7 ROOM CAPE 4 BRS, 2 baths, garage, gas steam heat. Move right in. \$145,000. E.J. REILLY, BROKER 759-1682

Belleville - By owner. 3 br Col. Move-in-cond. Mod kit. New windows. \$148K. 450-9451

PARTS, ACCESSORIES SERVICES

PARTS, ACCESSORIES SERVICES

BIB'S

ATTENTION! AUTO PARTS

WILL PAY CASH FOR ANY JUNK CAR IN ANY CONDITION

Highest prices paid for late models.

USED CARS & TRUCKS

USED PARTS 991-4246 or 991-0081 54 Stover Ave., Kearny USED PARTS

AUTO SALES

1986 Lincoln Cont. Givency Desgr Ser AM/FM Cass Ster. A/C Moonroof, 110K hwy mi. 1 owner Exc Cond. \$4500 Call after 7 667-1039

1987 Chevrolet Cavalier Station Wagon. 42,000 miles, A/C, radio. Good working cond. One owner. \$3500 or B/O. 667-5612

1990 Buick Custom Le Sabre, Excl cond. 1 owner 36,000 ml. \$9,950. 284-0084

86 Hyundai Excel 39K ml. AM/FM Cass, A/C, Sunroof. \$1300 Call after 6pm 429-8364

FREE REMOVAL OF JUNK CARS 24 HR SERV CALL TWIN TOWING 751-8430

AUTO WRECKERS

JUNK CARS WANTED *Free Tow-Away *Same Day Pick-Up (In Most Cases) S.O.S. TOWING, INC 429-8471 Bloomfield 461-2610 Newark

ANNOUNCEMENTS

WIN CASH & OTHER GREAT PRIZES. Cars, boats, Exotic Vacations. Enter Hundreds of sweepstakes & contests Absolutely FREE! Recorded message gives details. CALL 1-800-330-5519

GENERAL NOTICES

GERMAN BOY 17 anxiously awaiting host family. Enjoys sports, music. Other Scandinavian, European high school students arriving August. Call KATHLEEN (908) 389-3346 OR 1 (800) SIBLING

PERSONAL NOTICES

DIVORCE KIT DO IT YOURSELF M/F, 9am-5pm (908) 782-5540

CHILD CARE

NANNY D'S INFANT CARE CENTER Full Day Sessions 6 weeks to 2 Yrs. Old 204 Washington Avenue Belleville 759-1524 Director: Dolores Arlt

Nutley mom has 2 openings in home day care. Checkable Refs Provided Please call 667-1392

Seeking Mother of infant or pre-schooler to take care of mine in your home. 783-5966

CLERICAL

P/T Clerical Light Typing Hrs. M-F 10am to 2PM Call M-F betwn 9 to 5 201 667-6770

SECRETARY

Medical Legal Office Seeks Sec. Receptionist with communication and comp. skills to assist in operations. Medical claims, Nursing exp. a +. Salary neg. Contact Glen Gromann at 759-7030

EMPLOYMENT WANTED

Mother of 4 yr old looking to care for toddler (betw 3 & 5) in my Nutley home. 12-5pm 667-9260

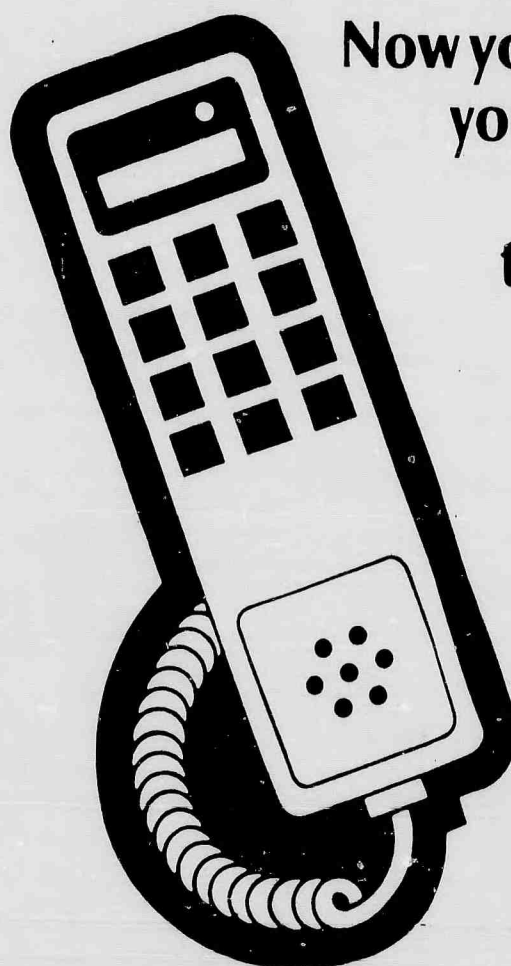
GENERAL OPPORS.

*MODELS*SINGERS *DANCERS*KIDS* TEENS*TWENTIES* *COVER GIRL STUDIO* 261-2042 LicBWO 193200 River Edge

2nd Assistant manager needed for women's specialty store. Good salary & bnfts, room for growth. Call Yvonne at 325-1152

ALL PHASE EMPLOYMENT SERVICE 382 Franklin Ave. Nutley, N. J. 661-W-O-R-K 997-W-O-R-K

Permanent & Temporary F/T & P/T positions Vacation Plan



Now you can phone in your classified ad and charge it to your VISA or MasterCard account



Call 667-3000

Give us the copy for your ad and your VISA or MasterCard account number

It's as easy as that!

The deadline is noon Tuesday for that week's issue, but the best times to call are Thursdays and Fridays.

Orechio Publications
800 Bloomfield Ave. Nutley, N.J. 07110
The Nutley Sun, Belleville Times, Bloomfield Life

HOUSES FOR SALE

BELLEVILLE
3 FAM. Reduced to \$260,000. Lg. apts. Sep. heat/cool & laundry! Near school & trans.
CONDO. 5 rms, 2 baths & balcony! Many extra features - must be seen. Near Nutley line. - 5 yr old prop. \$129,500 - offers!
RECORDS REALTY
3 High St., Nutley
667-5500

BELLEVILLE
OPEN HOUSE
SUNDAY JAN. 24
1-4 P.M.
90 JEFFERSON STREET
For sale by owner.
Immaculate fully expanded Cape. 4 bedrooms, 2 full baths, living room, dining room, finished basement, mod kitchen, new C/A & hot water, hardwood heat.

2 EXCEL. BUYS 2 FAMILY!!
26 Hornblower Ave.
6 over 6. New sep. sided hng. units. Alum. sided, garages. \$170's!
26 Lincoln Terr.
6 over 5. Alum. sided, new deck, garages. \$170's!
Motivated sellers!
D. Paul Lettini
R.E. Broker 450-8121
Eves. 450-0958

BLOOMFIELD
NEW LISTING
RANCH on oversized lot! "BARRIER FREE". 3 BRS, all level entries, wide doors! Just red. \$180's. Owner holds NJRE.

3 FAM. A-1 cond. Lg. fenced prop. 2 car gar. Near school, trans & highways - great loc! \$230's. Call for details.
RECORDS REALTY
3 High St., Nutley
667-5500

CRESTWOOD
ADULTS (\$55+)
7,500 Homes, 40 Styles, \$20,000-\$140,000. Over 50 Clubs & Organizations, Shopping, Transportation.
FREE BROCHURE
1-800-631-5509.
Realtors, P.O. Box D, Rt. 530, Whiting NJ 08579

Manahawkin
Waterfront Duplex!
Live in one unit and earn income from the other unit. Large front. Just minutes to the Bay. Call Anderson Agency.
1 (800) 444-8507

OPEN TO OFFERS
BELLEVILLE
101 FOREST ST.
BRICK SPLIT LEVEL - 4 BRS, mod kit, din area, LR, lg Florida rm, fin bsmt w/powder rm, summer kit & bar. Reduced - \$160,000.
PILGRIM REALTY
759-3349

HOUSES FOR SALE

NUTLEY
COL, 4 BRS, 2 1/2 baths, lg rms, rear encl porch, rec rm. A-1 cond! 50 x 150 lot. Near school, trans & stores. \$190's - make an offer!
LG HOME, Spring Grdn area. 5 BRS, 2 1/2 baths, den, rec rm, fam rm; 2 car gar, on lg corner lot. \$300's. One of a kind!
RECORDS REALTY
3 High St., Nutley
667-5500

NUTLEY
1 Fam in 2 Fam Zone. Check out 56 Union Av. Cent. Air & Gas Heat. Broker Owned.
Davey Agency 667-7799

INDUSTRIAL & COMMERCIAL

BUILDING FOR RENT, approx. 2,000 ft, equip with overhead door, & office space suitable for light manufacturing, or small business, 1 blk from NY & NJ buses, principles only.
Call 235-1879 after 5pm.

APARTMENTS UNFURNISHED

BELLEVILLE 3 1/2 Bright rms. H/H/W incl. W/W. Avail. immed. \$650.
Call 759-7981

BELLEVILLE 5 lg rms 3 BR H/H/W supplied. 750 per mo. sec req'd.
Call 759-8614

BELLEVILLE - 1 BR apt. Near trans, w/stove, refrig, air cond, parking. \$550 per month. No fee.
1 1/2 month security. Call Denise 759-1637

BELLEVILLE (Nr K-Mart) 3 Rm Apt. II & II/W supplied \$625 mth. + sec.
Call 759-3464

BELLEVILLE 3 rm apt. in prvt home. H/H/W sup. 2nd fl. No pets \$600 mo.
759-2392

BELLEVILLE Condo. Lovely 5 1/2 rms, 3 BRS, 2 baths + much more. \$115,000.
First floor. Mod 3 rms, \$500 + util.
AUTERI REALTOR
933-0306

BELLEVILLE - 3 mod rms, 2nd flr, h/w incl. \$525.
4 rms, 2nd flr, supply own utils. \$550.
4 1/2 rms, 2nd flr, h/w incl. \$575.

BLOOMFIELD 3 1/2 rms, 3rd flr, all utils incl. \$550.
NUTLEY - 3 1/2 rms, 2nd flr, supply own utils. \$525.
5 lg rms, 1st flr, supply all utils \$725.

METRO AGENCY
REACTOR 751-3400

BELLEVILLE - 3 fam, 1 BR, storage yard. \$475. plus utils. 492-2272

APARTMENTS UNFURNISHED

BELLEVILLE - 4 lg mod rms, 2 BRS, 2nd flr of young 2 fam home. Incl. refrig & stove. Avail 2/1. 759-1923

BELLEVILLE Mod 2 BR apt with wash/dry hkup, AC, refrig. Avail 2-1-93. \$790 incl H/H/W, off st prking.
★ ★ MARZULLI ★ ★
Realtor 743-2306

BELLEVILLE Studio. Sep kit. area, din area. \$435 incl all util, prking, & laund.
★ ★ MARZULLI ★ ★
Realtor 743-2306

BLOOMFIELD - 3 1/2 lg mod rms, garden apt, H/H/W, washing facilities on premises & parking.
Call 743-8886 or 748-0302

Bloomfield - 2 1/2 & 3 rms, \$550 & \$650 incl all util. N.Y. bus at door.
Call 429-8444

Bloomfield looking to share 2 BR, 1 fam house in quiet neighborhood. \$265. + utils. Male pref. 429-2171 after 6pm

Bloomfield 1st Fl. 5 Rms, W/W, Off St. Pkg. Storage & Yard. \$725 + Util.
667-5489 or 284-1736

Bloomfield - 3 rms, in prvt home. 3rd fl. HW sup. \$475. + sec & utils.
743-8748.

Bloomfield Location & Value 3 1/2 & 4 rms, spotless, w/new kit & new appl, newly fin hardwood floors, great closets. H/H/W incl. On site laundry, well maint, trans to NY & all conveniences at front door. Call 743-7261

Bloomfield - 1 BR, 3 fam. h/w incl. \$590. per mo. Call aft 5. 338-7357

BLOOMFIELD 3 1/2 mod rms. \$625 H/H/W incl. Grdn apt. Prking, laund, AC. Avail 2/1.

★ ★ MARZULLI ★ ★
Realtor 743-2306

BLOOMFIELD 7 rms. Avail 2/15. 3 or 4 BRS. \$1000 + util. Florida rm, sun porch, den, etc.
★ ★ MARZULLI ★ ★
Realtor 743-2306

BLOOMFIELD 4 rms. \$750 H/H/W incl. Avail immed. Mod 2 BR apt. Trans nearby.
★ ★ MARZULLI ★ ★
Realtor 743-2306

BLOOMFIELD Studio. Mod 2 rms w/off st. prking. Avail immed. \$325 + heat.
★ ★ MARZULLI ★ ★
Realtor 743-2306

BLOOMFIELD Mod. 2 BR apt with w/d hkup. \$550 + heat.
★ ★ MARZULLI ★ ★
Realtor 743-2306

APARTMENTS UNFURNISHED

MONTCLAIR 3 rms, 1 BR, 3rd fl. Avail immed. \$600 incl H/W.
★ ★ MARZULLI ★ ★
Realtor 743-2306

NEWARK (Verona Ave) 4 1/2 freshly painted rms. H/H/W & elec. incl. Prking. \$450 mth.
Won't Last!!
D. Paul Lettini
R.E. Broker 450-8121
Eves. 450-0958

No Newark 4 & 5 rms apts Supply own utilities 1 1/2 mo sec. No pets
Call 483-3136

NUTLEY 4 rms, \$575 + util. 3 1/2 rms, \$610 h&h/w incl.
4 rms, \$675 + util. 6 rms, \$800 + util. 5 rm Condo, \$1250 + util.

BELLEVILLE 4 rms, \$485 h&h/w incl. 4 1/2 rms, \$575 + util. 3 rms, \$669 h&h/w incl. 4 rms, \$700 + util. 4 rms, \$750 h&h/w incl.

BLOOMFIELD 2 1/2 rms, \$425 h&h/w incl. 4 rms, \$525 + util. 4 1/2 rms, \$550 + util. 4 rms, \$750 h&h/w incl.

COSTANTINE REALTY
REACTOR 667-7070

NUTLEY 3 rm Grdn, \$610 inc ht. 4 rms, \$675 inc ht. 5 rms, \$800 inc ht. House Rental - 2 BR Ranch, \$1100 + util.

BELLEVILLE 4 rms, \$700 + util. 4 rms, \$750 inc ht. **BLOOMFIELD** 3 rms, \$525 inc ht. 3 rms + gar, \$600 inc ht. 3 rm Grdn, \$625 inc ht. 5 rms, \$675 + ht.

CENTRE REALTY
REACTOR 667-5100

NUTLEY 4 rooms. Off street parking. \$600 + utilities. Available now. Broker: HANCOX REALTY 667-9115

NUTLEY 5 rms, \$875 + util. 4 rms, \$660 + util. 2 rms, \$400 + util. **BLOOMFIELD** 6 rms, \$850 + util. 5 ultra mod rms, \$1050 + 1 br Condo, \$700 h/w inc

BELLEVILLE 6 rm house, \$1200 + util. 6 rms, \$850 + util. 5 rms, \$795 h/w inc. 4 rms, \$700 + util. **MONTELL AGENCY** 759-6900

NUTLEY 5 rms, 2 BRS, laund, gar. Avail immed. \$700 incl. heat.
★ ★ MARZULLI ★ ★
Realtor 743-2306

Nutley - 3 1/2 rms. Clean, nice apt, h&h/w incl. \$500 + 1 mo sec. Non smoker pref. Parking. Near N.Y. bus. Call 667-5612

APARTMENTS UNFURNISHED

Nutley 1 BR apt. Mod. Kit, On site pkg. A/C, and laundry facil. Call 376-3796

Nutley 2BR, Formal DR, LR, H/H/W incl. \$850 mth. Adults preferred Call 667-3595 ask for Terry

NUTLEY mod 3 1/2 rms, 1 BR, W/w carp, ac, parking. \$700. plus utils. 661-9305

Nutley Neat. Single or married couple preferred. No Pets. Exc. Area. Call 661-4826, or 5202.

Nutley - 3 1/2 rms. grdn, new W/w, appl, A/C, NY bus at door \$700. + utils. Avail 2/1 661-2992

CONDOS FOR RENT

BELLEVILLE SALE OR RENT Bridgebrook Condos 725 Joralemon Street (Off Franklin Ave.)

Brick, 1 & 2 BRS, situated on 8 acres of beautiful landscaped grounds. Garage & pool incl in price. Private entrances. Low maintenance incl heat, hot water & gas. Pets O.K. VA & FHA approved. Sales \$85,000 - \$95,000. Rentals \$700 - \$850. Call Marge,

284-0904
PATRICIAN Associates Realtors

COM./BUS. RENTALS

BLOOMFIELD Warehouse bldg, storage, private driveway. \$8/SF net net, 5000 SF or 2500 whole or half. Avail immed.
★ ★ MARZULLI ★ ★
Realtor 743-2306

GARAGE FOR RENT

Garage for rent car or storage \$75. 759-8280/492-2272

HOUSES UNFURNISHED

Nutley, 1 Fam. No fee. 7 rms, 3 BRS, 2 bths, gar, storage, yrd, wash mach. Gas/elec incl. \$1500.
Pete 667-2877

OFFICE RENTALS

Trenton State House Historic District. 1000-2200 SF office space. Third floor walk-up. Kitchen, bath, A/C. Ideal for Lobbyist or Association. \$350-\$850 per month. 609-394-5050

RESIDENTIAL RENTALS WTD.

Attention Landlords! Apts wanted. We screen all prospective tenants. No fee to landlord. **COSTANTINE REALTY**
289 Franklin Ave., Nutley
REALTOR 667-7070

VACATION RENTALS

BAHAMAS CRUISE 5 days/4 nights, underbooked, Corporate rate, \$295/couple. Limited supply. 1-800-467-TRAVEL Ext. 204, Mon-Fri. 9-5.

VACATION RENTALS

***Brigantine - Nr. A.C.** 3 BRS, 2 Bths, Cathedral Ceilings, Skylights, Fireplace, Ocean View, W/D, Microwave. Perfect for Weekends & Weekly Rentals. Call 743-9720

Welcome President Clinton

NATIONAL SPORTSWEAR

368 Cortlandt St.
Belleville
759-2005

NUTLEY PET CENTER

406 Main St.
Belleville
751-1221

LISA'S HAIR SALON

37 1/2 Union Ave.
Belleville
450-9414

NICOSIA & SONS CONSTRUCTION CO.

34 Newark Pl.
Belleville
751-7171

STARR CATERERS

111 Newark Pl.
Belleville
759-6728

THREE GUYS FROM ITALY

170 Washington Ave.
Belleville
751-2241



The SERVICE DIRECTORY

The best people to service you are only a phone call away.
Why not call them today?

**CLEANING SERVICES**

•HOUSES, OFFICES professional bldgs cleaned.
•Exp'd •References
•Free Estimates.
Call 997-5849
Ask for Jenny or Miguel

A POLISH TOUCH
CLEANING SERVICES
We Clean houses, offices, & professional Bldgs. Thorough job. Holiday Cleaning.
998-0426

ELECTRICIAN

AURIEMMA ELECTRIC
Electrical Contractors
•Res/Comm/Indus
•SMOKE ALARMS*
•Attic & ceiling fans.
Disc prices
•New/Old work •Repairs
Prompt Prices & Service
24 HR Emergency Service
15% off with this Ad
Over 50 yrs of Service
Lic #1560 Fully Ins.
BONDED
If electricity is involved
CALL US!
751-5926

DE LIZIO ELECTRICAL CONTRACTING
•Ins. •Res. •Com.
•Free Estimates
No job too small/too far
CALL 661-2937
License No. 11608

TALBOT ELECTRIC
Lic #9386 Fully Ins.
Realistic Prices &
Prompt Reliable Services
CALL MIKE 450-4308

ENTERTAINMENT

HAVE A MAGICIAN
FOR YOUR NEXT
BANQUET OR PARTY
BUTLS-CHILDREN
HARRY PARKHURST
939-7980

GUTTERS

•GUTTERS & LEADERS
Cleaned, repaired, or replaced. Also roof & siding repairs. Interior & exterior painting.
CALL AL ROBERTS
751-5462 Free Est.

BILL'S GUTTER SERVICE
•Gutters & Leaders
•Cleaned & Flushed
•Screening & Repairs
•Minor Tree Trimming
338-0448

HOME IMPROVEMENT

•COPPOLA & SONS, INC.
Est. 1942 50 yrs. Exp.
Aluminum & Vinyl Siding
Roofs/Doors/Additions
Repairs/Windows/Gutters
429-9266 Fully Insured

HOME IMPROVEMENTS
20 Years Exp.
•Carpentry •Kitchens
•Plumbing •Bathrooms
•Electrical •Rec. Rooms
•Decks •Porches •Encls.
•Roofing •Additions
•Window/Door Replc.
For Free Estimates
CHARLIE 759-4317

HOME IMPROVEMENT

NICOSIA & SONS CONSTRUCTION CO., INC.
Built on Recommendation
35 Years Experience
•Add a Level •Dormers
•Bathrooms
•Additions
•Kitchens
•Finished Basements
Free Est. Fully Ins.
751-7171

Northeastern Home Improvements
•Carpentry
•Masonry
•Roofing & Siding
Call 661-9212

ROOFING GUTTERS
•Siding - Vinyl & Alum
•Wildlife control.
•Chimney caps. Free Est
Call Bob
751-4155
R. C. HOME IMPROVEMENTS

MASONRY

J & B MASONRY CONTRACTORS
Fully Insured/Free Est.
All Types of Brick & Block Work
•Sidewalks •Patios
•Interlock Pavers
•Foundations •Steps
Belgium Blocks •Quality Work •Reas. Prices
•Complete Editions
661-0532

MASONRY

All types of masonry work. Steps, sidewalks, patios, retaining walls. Also additions & alterations. Special 12x12 patio \$499. 10x12 treated lumber deck w/railing \$975. Free est/fully ins.
Call Sal 667-0157.

MASONRY SPECIALISTS
LaFERRIERE & SONS
"Over 2 Generations of Exp"
•Sidewalks •Steps
•Brick Work •Plastering
•Retaining Walls
•Patios, etc.
QUALITY
WORKMANSHIP AT
REASONABLE PRICES
667-3790 or 226-0571

P. A. CARSILO & SONS, INC. MASONRY
•Driveways •Sidewalks
•Stairs •Plastering
•Retaining Walls
•R.R. Ties •Backhoe
•Waterproof
•Fully Ins. Free Est.
676-8390

MOVING & STORAGE

MOVING?
Call The Professionals
Residential - Commercial
7 days a week. No job too big or too small.
CALL 478-8685
Lic. No. PM0407

PAUL'S MOVING & TRUCKING CO.
•Local & Long Distance
•Packing & Light Deliveries
Lic. PM00067
675-6440

PAINTING

ANY 3 ROOMS PAINTED \$199.00 PLUS PAINT
•Fast, Clean Work
Husband & Wife Team
Sammy & Barbara
667-7440

BILL Mc DONALD PAPERHANGING
Residential/Commercial
•Trained by THE PAPERHANGING INSTITUTE
Free Estimates 667-9834

DANISH PAINTING CO.
•European Quality Craftsmanship
KENNETH HANSEN
667-7614

ED STELLEY PAINTING
Interior/Exterior
•Painting
•Staining •Varnishing
Free Estimates. Fully Ins.
450-4942

INTERIOR EXTERIOR
•Free Estimates
•Wall Paper Removal
•Reliable & Quality Work
Call NICK 748-6379
Fully Insured

PAINTING
To Suit Your Schedule
•Days/Nights/Wknds
•Reas. Rates •Free est.
Call Mike
235-0522

PAINTING

PAINTING/PLASTERING \$30.00 A ROOM
Top of the line paint included. Wall & ceiling repair. In/Minor ext. Call 667-7350, Vincent

R. BURGHARDT PAINTING & PAPER HANGING
•OVER 20 YEARS EXPERIENCE
•FREE ESTIMATES
BOB 667-5478

SAL & SON
Painting Contractors
•Semi-Driveways
•Clean Gutters
•Wash Windows
•Minor Repairs
Call 939-4740

SAL POLIZZOTO
Painting & Decorating
•Int./Ext. •Res./Com.
Expert on Paper hanging
Call for Free Estimate
24 Hr.Serv. Fully Ins.
939-8781

WINDHEIM PLUMBING & HEATING
418 Franklin Ave.
NUTLEY
•Gas Heat
•Hot Water Heaters
•Disposals •Dishwashers
•Modernizing Bathrooms
Kitchens
667-6886
Lic. #143
We accept:
•Mastercard •Visa
•Diner's Club
•Carte Blanche

Dial 667-3000
to call in your Classified ad

PLUMBING

Keep Your Plumbing Young
J. G. YOUNG & SONS, INC.

PLUMBING HEATING AUTOMATIC FIRE SPRINKLER SYSTEMS

State Licenses
No. 3684 & No. 990
REMODELING
•Kitchens & Bathrooms
Remodeled

•Gas Heat
•Hot Water Heaters
•Electric Sewer Cleaning
•Residential, Commercial & Industrial Repairs
•Alterations
•New Construction
14 New St. Belleville
759-1476

RECREATION

RIVER CRUISES
Spend 4 or 5 nights cruising central Canada's calm rivers in exquisite comfort aboard a modern, elegant replica steamboat. Outstanding scenery, world-class attractions. From \$749. Free Brochure. 1 (800) 267-7868

TILE CONTRACTORS

GENNA TILE
Complete Bathroom Modernization
No job too "small" or too "BIG"
661-5172

TILE CONTRACTORS



ShopRite Remembers
Dr. Martin Luther King, Jr.
We Share His Dream

We Save You *more* MONEY With Our 1993... Can Can Sale!

Maxwell House
Master Blend
AUTOMATIC DRIP (EXCEPT DECAF.)
Master Blend Ground Coffee
CASE OF 24
21.36
11 1/2-oz. can **.89**

BUMBLE BEE
IN WATER
Chunk Light Tuna in Water
IN OIL OR WATER
Bumble Bee Tuna
CHUNK LIGHT
CASE OF 48
23.88
6 1/2-oz. cans **1.99**

BERTOLLI
100% Pure
Olive Oil Classico
3 QT. 5 OZ. CAN
Bertolli Olive Oil
ShopRite Sale Price **6.99**
LESS PRICE PLUS club Discount **-1.00**
YOU PAY ONLY **5.99**

CANADA DRY
GINGER ALE
(PLUS DEP. WHERE REQUIRED)
SELECTED VARIETIES GINGER ALE
Canada Dry, RC or Diet Rite
CASE OF 4
6 PACKS **3.96**
6-Pk. **.99**
12-oz. cans

REG. OR SPECIAL REQUEST
Campbell's Tomato Soup 10 3/4-oz. cans **4.99**
SOLID PACK, IN OIL OR WATER
Bumble Bee White Tuna 6 1/2-oz. cans **4.49**
CRUSHED, PUREE OR SAUCE
Tuttorosso Tomatoes 1-lb. 12-oz. can **.49**
REGULAR OR LITE
Del Monte Fruit Cocktail 1-lb. 13-oz. can **.99**
REG. OR NO SALT ADDED
PIECES & STEMS
ShopRite Mushrooms 4-oz. cans **1.99**
20-QUART YIELD
Lipton Iced Tea Mix 4-lb. can **2.99**
WHY PAY MORE™
ShopRite Beef Ravioli 2-lb. 8 oz. can **.99**
WHY PAY MORE™
Rlenzi White Clam Sauce 15-oz. can **.99**
SEL. VAR., READY TO SPREAD
Betty Crocker Frostings 1-lb. can **.99**

WHY PAY MORE™
Contadina Tomato Sauce 8-oz. cans **9.100**
SELECTED VARIETIES
Hi-C Fruit Drinks 1-qt. 14-oz. can **.49**
WHY PAY MORE™
Bumble Bee Pink Salmon 1 1/4-oz. can **1.79**
WHY PAY MORE™
ShopRite Pineapple Juice 1-qt. 14-oz. can **.89**
ShopRite HALVES OR SLICED
Bartlett Pears IN LIGHT SYRUP 1-lb. 13-oz. can **.89**
CHUNK, SLICED OR CRUSHED
IN NATURAL JUICE
Golden Value Pineapple 1-lb. 4-oz. cans **1.99**
WHY PAY MORE™
Del Monte Raisins 1-lb. 8-oz. canister **1.99**
ITALIAN STYLE
Tuttorosso Tomatoes 2-lb. 3 oz. can **.69**
WHY PAY MORE™
Argo Spinach 15-oz. cans **3.100**

ORIG. OR SPECIAL REQUEST
SOUP 1/2 LESS SALT
Campbell's Chicken Noodle 10 3/4-oz. cans **5.200**
WHY PAY MORE™
ShopRite Chicken Broth 13 3/4-oz. cans **4.99**
WHY PAY MORE™
Campbell's Pork & Beans 1-lb. cans **3.100**
SLICED OR DICED CARROTS OR
ShopRite Mixed Vegetables 1-lb. cans **3.100**
PLUS DEP. WHERE REQ.
C & C Seltzer (72-oz. T.W.) 6-pack 12-oz. cans **.79**
SELECTED VARIETIES
C & C Soda Plus (72-oz. T.W.) 6-pack 12-oz. cans **.99**
WHY PAY MORE™
ShopRite Tomato Sauce 1-lb. 12-oz. can **.59**
ShopRite BITE SIZE CHEESE OR
BEEF RAVIOLI OR
Spaghetti With Meatballs 15-oz. cans **4.199**
REG. OR NO SALT ADDED,
WHOLE OR SLICED
ShopRite White Potatoes 1-lb. cans **3.100**

WHY PAY MORE™
Garden Sweet ShopRite Peas 1-lb. cans **4.99**
PINTO, GARBANZO OR RED
OR DARK RED
Green Giant Kidney Beans 15.5-oz. cans **1.100**
FRENCH OR CUT GREEN BEANS, WHOLE KERNEL
CORN (REG. OR NO SALT ADDED) OR PEAS
Del Monte Vegetables CASE OF 12 16 to 17-oz. cans **3.99**
SMALL WHOLE, CUT
OR SLICED
ShopRite Beets 1-lb. cans **3.100**
REGULAR OR NATURAL
ShopRite Apple Sauce 1-lb. cans **3.100**
ShopRite FRUIT COCKTAIL IN HEAVY
SYRUP OR HALVES OR SLICES IN JUICE
Yellow Cling Peaches CASE OF 6 16-oz. cans **3.99**
SELECTED VARIETIES
Alpo Dog Food 14-oz. cans **6.299**
SELECTED VARIETIES
9 Lives Cat Food 5 1/2-oz. cans **9.199**
SELECTED VARIETIES
Skippy Dog Food 14-oz. cans **3.100**

SAVE ON OUR GARDEN FRESH PRODUCE!

Golden Ripe
Bananas **29¢** lb

Eggplant
3 lbs.
99¢

California
Broccoli Rabe **69¢** lb

Fresh Select
Cucumbers 5 for **99¢**

Fresh Yams 4 lbs. **99¢**

Crisp
Green Peppers **39¢** lb

Florida
Strawberries **99¢** Pint

Washington State
Extra Fancy
Red Delicious Apples **79¢** lb

Red Ripe 5x6 size
Tomatoes **79¢** lb.

Washington State Extra Fancy
Golden Delicious Apples **79¢** lb.

Plum Tomatoes **79¢** lb.

DelMonte Fresh
Pineapples **\$1.99** Each

California
Cauliflower **99¢** each
12 size